

Yerevan energy storage peak-shaving battery





Overview

Does energy storage make peak shaving easy?

This guide explains how energy storage systems make peak shaving easy for both homes and businesses—plus real-world tips from ACE Battery. In an era of rising electricity costs, unpredictable peak demand charges, and growing pressure for energy independence, peak shaving energy storage is no longer a luxury—it's a necessity.

What types of peak shaving solutions do ace battery offer?

At ACE Battery, our peak shaving solutions come in various formats—from compact modular home battery units to industrial-grade containerized energy storage systems —each customizable to match your load profile and energy goals. Commercial vs. Residential Applications: What's the Difference?

.

Is peak shaving a future-ready energy storage system?

The energy landscape is evolving fast. With dynamic pricing, virtual power plants (VPPs), and increasing renewable penetration, peak shaving is set to become even more essential. Future-ready energy storage systems will not just manage peaks—they'll: Choosing a partner with scalable, flexible, and certified systems is crucial.

What is battery-based peak shaving?

Whether you're managing a factory's fluctuating load or trying to optimize your home's solar setup, battery-based peak shaving offers a smart, scalable way to take control of your power bills and reduce grid stress.



Yerevan energy storage peak-shaving battery



Optimal allocation of battery energy storage systems for peak shaving

To avoid such expensive upgrades, a practical and more viable alternative solution is to use a battery energy storage system (BESS) that can participate in peak shaving ...

[Learn More](#)

[Peak Shaving: Optimize Power Consumption ...](#)

Peak shaving, or load shedding, is a strategy for eliminating demand spikes by reducing electricity consumption through battery energy storage systems or other means. In this article, we explore what is peak ...

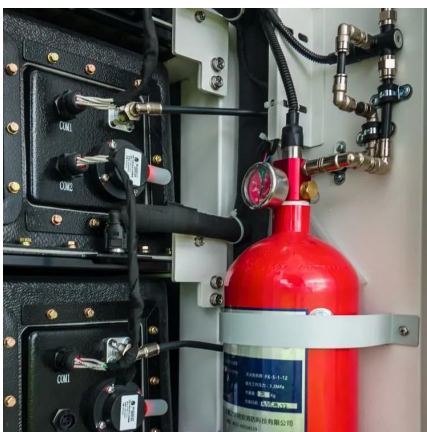
[Learn More](#)



Peak Shaving: Optimize Power Consumption with Battery Energy Storage

Peak shaving, or load shedding, is a strategy for eliminating demand spikes by reducing electricity consumption through battery energy storage systems or other means. In ...

[Learn More](#)

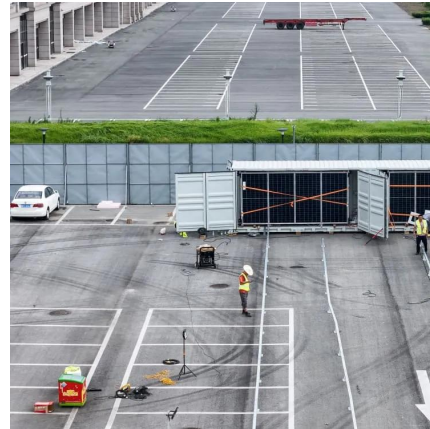


[BESS for Peak Shaving: Cut Energy Costs by 30% \[Origotek\]](#)

How Battery Energy Storage Systems reduce peak demand charges and save businesses 15-30% on energy. Discover efficient, safe BESS solutions built for industrial & ...



[Learn More](#)



Peak Shaving with Battery Energy Storage Systems in Distribution ...

The objective is to reduce the peak power at the point of common coupling in existing distribution grids by adapting the control of the battery energy storage system at ...

[Learn More](#)



Peak Shaving with Battery Energy Storage ...

The upper plot (a) shows the peak shaving limits S thresh, b in % of the original peak power for all 32 battery energy storage system (BESS) with a capacity above 10 kWh.

[Learn More](#)



Peak Shaving with Battery Energy Storage ...

The objective is to reduce the peak power at the point of common coupling in existing distribution grids by adapting the control of the battery energy storage system at individual industrial consumer sites.

[Learn More](#)





[Yerevan Battery Energy Storage Power Station Approved A ...](#)

SunContainer Innovations - Summary: The approval of Yerevan's battery energy storage power station marks a critical step in modernizing Armenia's energy infrastructure. This article ...

[Learn More](#)



Peak shaving

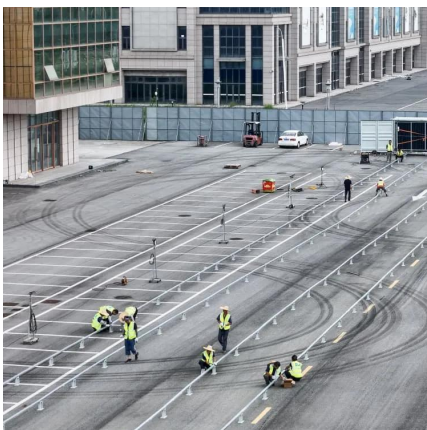
Why peak shaving matters Modern consumers actively seek cost-effective energy solutions and sustainable practices. This white paper explores peak shaving as an effective ...

[Learn More](#)

[Peak Shaving Energy Storage: The Complete Guide for ...](#)

Want to cut electricity costs and avoid peak demand charges? This guide explains how energy storage systems make peak shaving easy for both homes and businesses--plus ...

[Learn More](#)



[Peak Shaving with Battery Energy Storage Systems in](#)

The upper plot (a) shows the peak shaving limits S thresh,b in % of the original peak power for all 32 battery energy storage system (BESS) with a capacity above 10 kWh.

[Learn More](#)



ARMENIA ENERGY STORAGE PROGRAM

o The key benefits provided by the smaller 1-hour battery storage variants are revenues from reserve provisions and balancing energy; however, the limited size of these ...

[Learn More](#)



Rule-Based Peak Shaving Using Battery Energy Storage with ...

In recent times, energy management in low-voltage distribution networks has become increasingly important, driven by the need for energy efficiency, cost reductions, and ...

[Learn More](#)

Contact Us

For catalog requests, pricing, or partnerships, please visit:
<https://fundacjawandea-imk.pl>

Scan QR Code for More Information



<https://fundacjawandea-imk.pl>