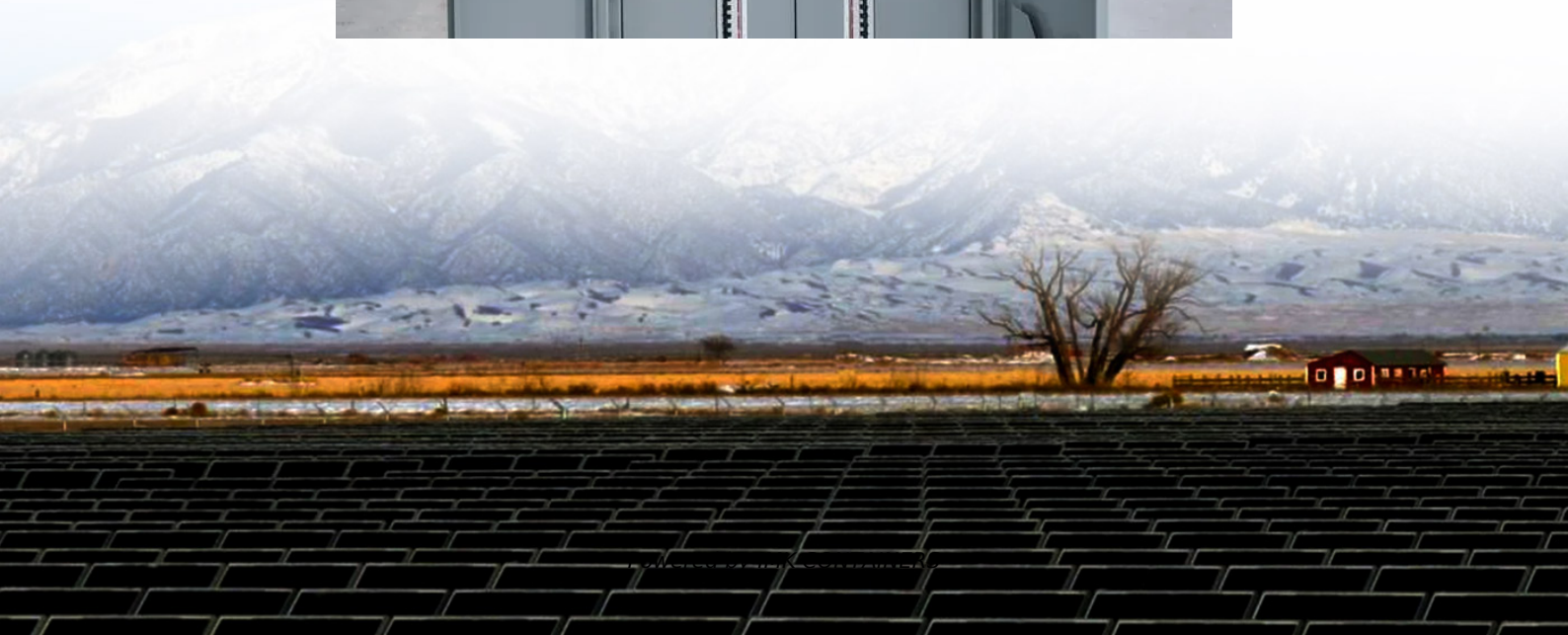


Wp solar panel size





Overview

What is a Wp rating for a solar panel?

These conditions include a solar irradiance of 1000 watts per square meter, a cell temperature of 25°C, and an air mass of 1.5. Wp provides a standardized way to compare the power output of different solar panels, regardless of their size or technology. The Wp rating is crucial in determining the potential energy output of a solar panel.

What are the dimensions of standard solar panels?

Most solar panels are about 1.5 inches thick. The typical classification of solar panel sizes is based on the solar cell size, but it's not very useful for most calculations.

What are the dimensions of a 96-cell solar panel?

96-cell solar panel size. The dimensions of 96-cell solar panels are 41.5 inches long and 63 inches wide. That's a 41.5×63 solar panel.

How much wattage does a solar panel take?

Solar panel sizes and wattage range from 250W to 450W, taking up 1.6 to 2 square metres per panel. One of the most important things to consider when getting solar panels for your home is the specific solar panel size and dimensions.



Wp solar panel size



[What Is Wp In Solar Panel?](#)

What is Watt-Peak (Wp)? Watt-Peak (Wp) is a measure of the maximum power output a solar panel can produce under standard test conditions (STC). These conditions ...

[Learn More](#)

[Standard Solar Panel Sizes And Wattages \(100W-500W ...](#)

72-cell solar panel size. The dimensions of 72-cell solar panels are as follows: 77 inches long, and 39 inches wide. That's a 77x39 solar panel; basically, a longer panel, mostly ...

[Learn More](#)



[The Ultimate Guide to Solar Panel Size, Weight & Wattage ...](#)

Find the exact solar panel size & weight in our 2025 guide. Our complete chart compares models by ft/cm and lbs/kg to help you plan your installation.

[Learn More](#)



[Solar Panel Size Guide , Best Panel Size for Your Roof](#)

Learn how to choose the ideal solar panel size for your home. Get expert tips, standard dimensions, and a size chart to simplify your solar decisions.



[Learn More](#)



[Calculation of peak power \(Wp\) required in photovoltaic ...](#)

Determine peak power (Wp) for photovoltaic systems to optimize array sizing, energy output, and overall system efficiency with precise calculations.

[Learn More](#)



[Solar Panel Size & Dimensions Guide 2025](#)

Solar Panel Size Fundamentals When discussing solar panels, the term "size" can be confusing because it refers to electrical capacity rather than physical dimensions. Solar panel size is measured in watts (W) and ...

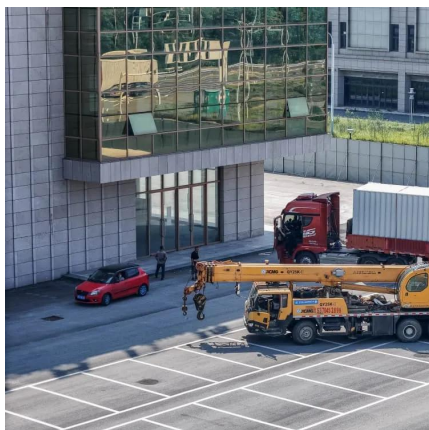
[Learn More](#)



[Guide to Solar Panel Sizes & Dimensions \(October 2025\)](#)

Solar panel size refers to the total amount of power a solar panel can generate over a period of time Solar panel dimensions refers to the physical size of a solar panel Solar ...

[Learn More](#)





What is Solar Panel Size and Why Does it Matter?

The average size of a typical residential solar system in the US is 6-8 kW, meaning that a typical home rooftop array for the home will optimally have 15 - 20 solar panels installed ...

[Learn More](#)



What is Solar Panel Size and Why Does it ...

The average size of a typical residential solar system in the US is 6-8 kW, meaning that a typical home rooftop array for the home will optimally have 15 - 20 solar panels installed because, for example, Qcells ...

[Learn More](#)

What Is Standard Solar Panel Size? A ...

Overview The standard solar panel size typically ranges from 65 inches by 39 inches for residential units, with most panels containing either 60 or 72 cells, which significantly affects installation capacity and ...

[Learn More](#)



Solar Panel Size Guide , Best Panel Size for ...

Learn how to choose the ideal solar panel size for your home. Get expert tips, standard dimensions, and a size chart to simplify your solar decisions.

[Learn More](#)



[Solar Panel Size & Dimensions Guide 2025 , Complete Specs](#)

Solar Panel Size Fundamentals When discussing solar panels, the term "size" can be confusing because it refers to electrical capacity rather than physical dimensions. Solar ...

[Learn More](#)



[The Ultimate Guide to Solar Panel Size.](#)

...

Find the exact solar panel size & weight in our 2025 guide. Our complete chart compares models by ft/cm and lbs/kg to help you plan your installation.

[Learn More](#)

[What Is Wp In Solar Panel?](#)

What is Watt-Peak (Wp)? Watt-Peak (Wp) is a measure of the maximum power output a solar panel can produce under standard test conditions (STC). These conditions include a solar irradiance of 1000 ...

[Learn More](#)



[What Is Standard Solar Panel Size? A Comprehensive Overview](#)

Overview The standard solar panel size typically ranges from 65 inches by 39 inches for residential units, with most panels containing either 60 or 72 cells, which ...

[Learn More](#)



Contact Us

For catalog requests, pricing, or partnerships, please visit:
<https://fundacjawandea-imk.pl>

Scan QR Code for More Information



<https://fundacjawandea-imk.pl>