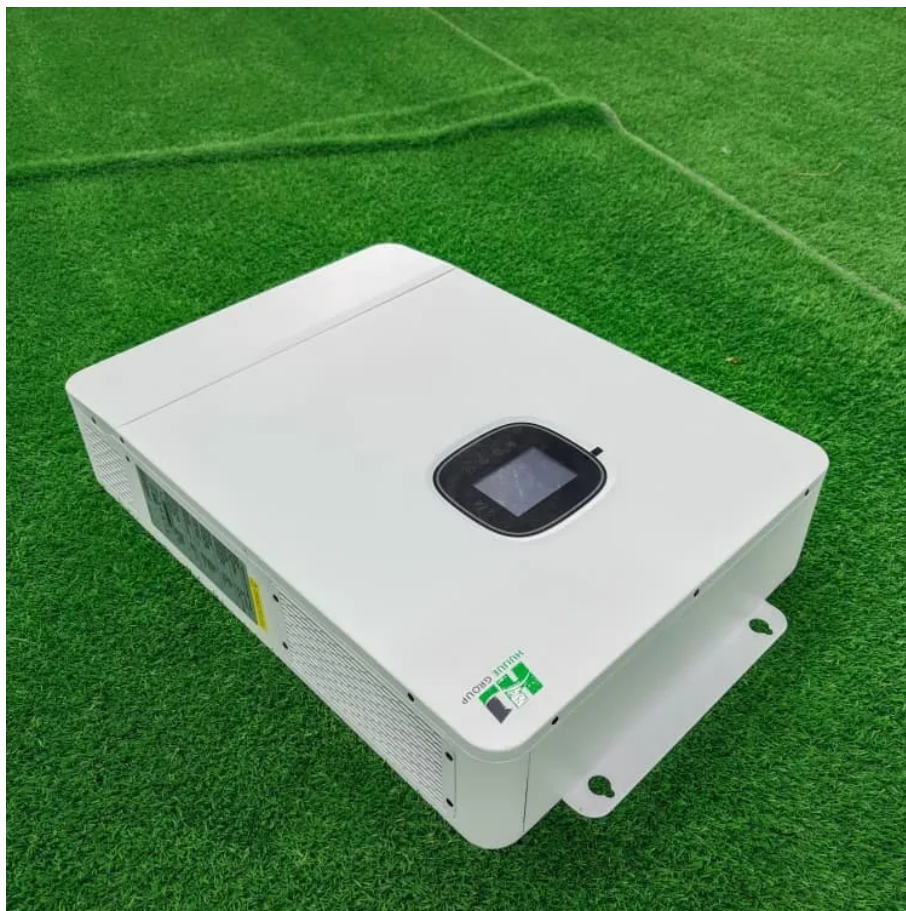


Wind power container factory





Overview

What is a wind turbine company?

The business of the company covers intelligent design and manufacturing of wind turbine Generators, intelligent operation and maintenance of wind farms, wind resource evaluation, digital wind farm investment and development, management of wind farm assets, intelligent energy and etc.

What is China's most advanced wind turbine installation vessel?

[Photo/Xinhua] BEIJING -- A home-made wind turbine installation vessel, believed to be the most advanced in China, has been delivered in Yantai, East China's Shandong province, its producer China International Marine Containers (Group) Co Ltd (CIMC) announced.

What is the capacity of a wind turbine?

The wind turbine capacity ranges from 1.25MW to 8MW+ with full capacity range coverage. Shanghai Electric Wind Power Group, based on six R&D centers in Shanghai, Beijing, Denmark and other regions, has built a global technical R&D system.

Does China have a bottleneck in offshore wind power development?

China has intensified its efforts in offshore wind power development in recent years. However, the availability of wind installation vessels has become a bottleneck in both domestic and global offshore wind development. This is particularly the case for the installation of large wind turbines.



Wind power container factory



Case Study

Photo taken on-site of YQN team Urgently Alter from Land Transport to Waterway Transport Transporting wind power equipment demands a high level of logistics expertise. Steering a ...

[Learn More](#)

Niedersachsen Ports Installs Container Wind Turbine to Power ...

By combining wind power, solar energy, and storage in a compact format, the container turbine offers a scalable and adaptable solution for various applications. As ports ...

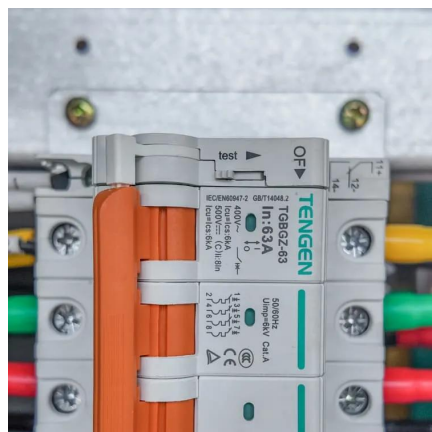
[Learn More](#)



Solar Container , Large Mobile Solar Power ...

LZY mobile solar systems integrate foldable, high-efficiency panels into standard shipping containers to generate electricity through rapid deployment generating 20-200 kWp solar arrays, reducing reliance on ...

[Learn More](#)



[What Are The Main Characteristics Of A](#)

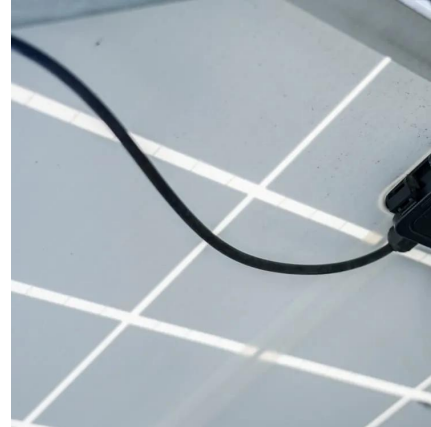
...

This article explores the key features of a power container factory, including specialized manufacturing, advanced engineering, system integration, customization, quality control,



environmental responsibility, ...

[Learn More](#)



What Are The Key Features Of A Modern Power Container Factory

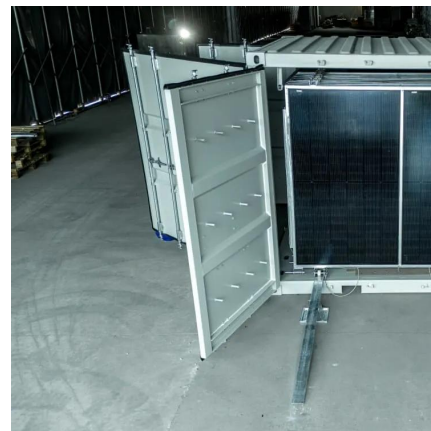
Modern power container factories leverage advanced technologies, modular designs, sustainability practices, and skilled workforces to efficiently produce container ...

[Learn More](#)

Innovation Strength , Shanghai Universal Qidong Container Factory ...

The 15th China International Energy Storage Conference and Exhibition Recently concluded successfully at the Hangzhou International Expo Center Shanghai Universal ...

[Learn More](#)



[Solar Container , Large Mobile Solar Power Systems](#)

LZY mobile solar systems integrate foldable, high-efficiency panels into standard shipping containers to generate electricity through rapid deployment generating 20-200 kWp ...

[Learn More](#)



Our Group

Shanghai Electric Wind Power Group Co., Ltd. (hereinafter referred to as "Shanghai Electric Wind Power Group") was established in 2006. The business of the company covers intelligent ...

[Learn More](#)



['Zhengli 3500' wind power station launched ...](#)

The "Zhengli 3500," a 3,500-ton self-propelled, self-elevating offshore wind power installation platform developed by Shanghai Zhenhua Heavy Industries (Group) Co Ltd, was launched recently in Nantong, ...

[Learn More](#)

[Niedersachsen Ports Installs Container Wind ...](#)

By combining wind power, solar energy, and storage in a compact format, the container turbine offers a scalable and adaptable solution for various applications. As ports and other industries seek to ...

[Learn More](#)



[Offshore wind turbine installation vessel ...](#)

The vessel, officially known as "Tiejian Wind Power 2000," is China's fourth-generation self-elevating and self-propelled vessel dedicated to wind turbine installation.

[Learn More](#)



Case Study

Photo taken on-site of YQN team Urgently Alter from Land Transport to Waterway Transport
Transporting wind power equipment demands a high level of logistics expertise. Steering a wind power project requires swift ...

[Learn More](#)



Shipping Container Solutions for the Wind & Solar Energy ...

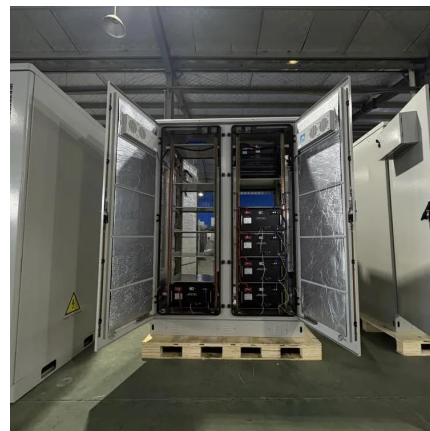
Create modern, eco-friendly spaces with Corner Cast's shipping container solutions. Our bespoke designs offer innovative, affordable, and sustainable wind and solar energy spaces tailored to ...

[Learn More](#)

Our Group

Shanghai Electric Wind Power Group Co., Ltd. (hereinafter referred to as "Shanghai Electric Wind Power Group") was established in 2006. The business of the company covers intelligent design and manufacturing of ...

[Learn More](#)



Offshore wind turbine installation vessel delivered in East China

The vessel, officially known as "Tiejian Wind Power 2000," is China's fourth-generation self-elevating and self-propelled vessel dedicated to wind turbine installation.

[Learn More](#)



What Are The Main Characteristics Of A Power Container Factory

This article explores the key features of a power container factory, including specialized manufacturing, advanced engineering, system integration, customization, quality ...

[Learn More](#)



What Are The Key Features Of A Modern

...

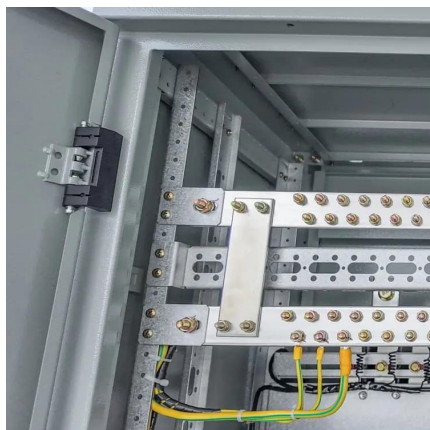
Modern power container factories leverage advanced technologies, modular designs, sustainability practices, and skilled workforces to efficiently produce container batteries and meet the growing ...

[Learn More](#)

Shipping Container Solutions for the Wind

Create modern, eco-friendly spaces with Corner Cast's shipping container solutions. Our bespoke designs offer innovative, affordable, and sustainable wind and solar energy spaces tailored to your needs.

[Learn More](#)



'Zhengli 3500' wind power station launched in Nantong

The "Zhengli 3500," a 3,500-ton self-propelled, self-elevating offshore wind power installation platform developed by Shanghai Zhenhua Heavy Industries (Group) Co Ltd, was ...

[Learn More](#)



Contact Us

For catalog requests, pricing, or partnerships, please visit:
<https://fundacjawandea-imk.pl>

Scan QR Code for More Information



<https://fundacjawandea-imk.pl>