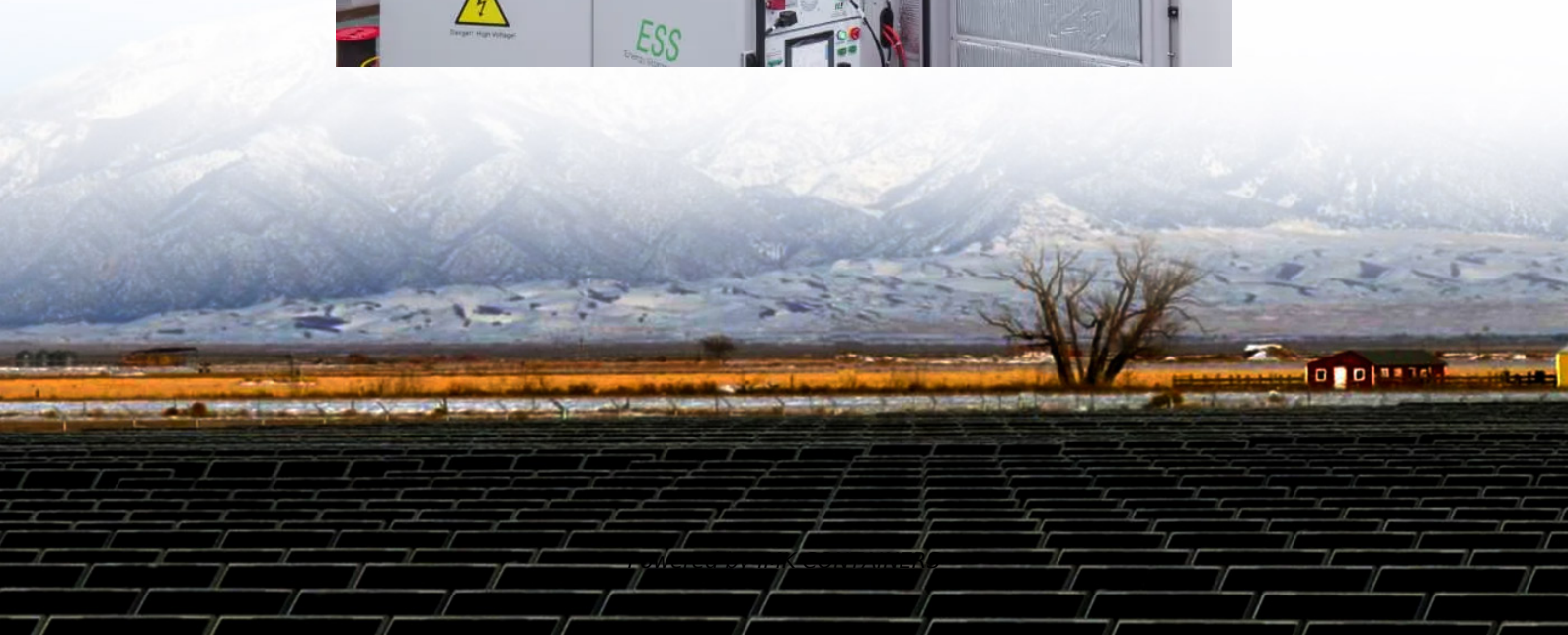


Which one consumes more electricity 12V or 60V inverter





Overview

Do inverters use a lot of power?

Generally, yes. Inverters have an idle power usage. A Victron 48/5000 burns 30W just by being powered on. That's 0.72kWh/day or 60Ah of 12V battery capacity - would kill a medium size car battery in 24 hours even if no loads are supplied. The MPP Solar/Growatt units and most all-in-ones are notorious for high idle energy consumption.

Do inverters consume a lot of energy during a power outage?

Well, during extreme power outages, you will have to use your inverter more than usual, which will increase your energy consumption. Moreover, you can only limit your consumption if your downtime is not that much, and you do not have to discharge your inverter's battery.

How much power does an inverter need?

Usually, the minimum power required for an inverter is nearly 8 to 10% higher than the appliances it is powering. Additionally, the inverters have a tendency to draw power from batteries even when not in use or turned off, and that depends mostly on the features and the design of the inverter.

How much power does a 12Kw inverter use?

My 18kw inverter can handle 3X the surge current (54kw) for 20seconds. This is the most important spec to me. It also uses about 300 watts/hr idle power. But the 12kw model which is 33% smaller still uses 270 watts. I just figure one extra solar panel to power the inverter. If you have a lot of heavy loads, it's not a big deal.



Which one consumes more electricity 12V or 60V inverter



voltage

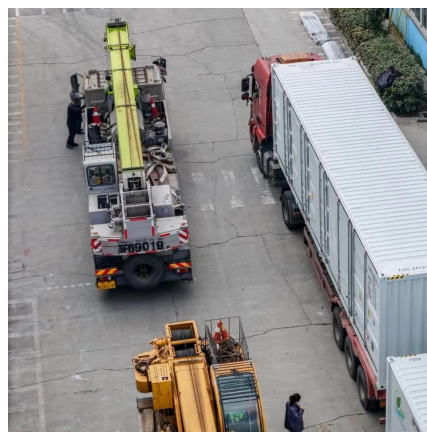
I just saw a DIY solar panel setup, in which a single panel produces 12V output, which is then passed through a controller and stored in a 72Ah 12V car battery. The stored electricity is mostly sup

[Learn More](#)

voltage

I just saw a DIY solar panel setup, in which a single panel produces 12V output, which is then passed through a controller and stored in a 72Ah 12V car battery. The stored ...

[Learn More](#)



[Does Inverter Increase Electricity Bill?](#)

Discover Innوتينم, a leading battery energy storage system manufacturer, offering cutting-edge all-in-one energy storage systems. Our advanced battery energy storage inverter ...

[Learn More](#)



[WHICH ONE IS BETTER 12V INVERTER OR 60V](#)

The 5kw 12v 220v inverter is a versatile and essential device for converting direct current (DC) from a 12-volt source into a 220-volt alternating current (AC), facilitating the use of household ...



[Learn More](#)



[Does Inverter Increase Electricity Bill?](#)

Thus, inverter ACs are more efficient and use less energy, resulting in lower energy costs. In conclusion, we can wind up with the fact that an inverter does increase ...

[Learn More](#)



[12V 60V Inverter Powering Efficiency Across Industries](#)

Summary: Discover how 12V/60V inverters enable flexible energy conversion across renewable systems, transportation, and industrial applications. This guide explores technical advantages, ...

[Learn More](#)



Inverter Myths Debunked: Power Consumption and Electricity ...

Discover the truth about inverter power consumption with Okaya's Smart Wave, Ultra Pure, and Power Max UPS series. Debunk myths about high electricity bills and learn how our energy ...

[Learn More](#)



[12v or 60v Inverter. Does it Matter? , Electronics Forums](#)



Hello! I'm in the middle of a build. It's a lithium battery pack (aka solar generator). The plans called for 60 volt 2500 watt DC>AC inverter. I accidentally bought a 12 volt. The ...

[Learn More](#)



[Does a Bigger Inverter Use More Power?](#)

The higher the power, the more electrical energy the 12V inverter can supply to electrical devices. However, the power of the inverter does not directly determine its energy ...

[Learn More](#)



[Big inverters vs smaller inverters](#)

Generally, yes. Inverters have an idle power usage. A Victron 48/5000 burns 30W just by being powered on. That's 0.72kWh/day or 60Ah of 12V battery capacity - would kill a medium size car battery in 24 hours ...

[Learn More](#)



[Which Inverter Do You Need? , Power Guide + Tips](#)

Easily calculate the inverter you need. Explore EcoLine's practical power guide with peak usage, applications, and 12V/24V advice.

[Learn More](#)



[Big inverters vs smaller inverters](#)



Generally, yes. Inverters have an idle power usage. A Victron 48/5000 burns 30W just by being powered on. That's 0.72kWh/day or 60Ah of 12V battery capacity - would kill a ...

[Learn More](#)



[Inverter Efficiency: Understanding How Much Power You're ...](#)

Discover Innotinum, a leading battery energy storage system manufacturer, offering cutting-edge all-in-one energy storage systems. Our advanced battery energy storage inverter ...

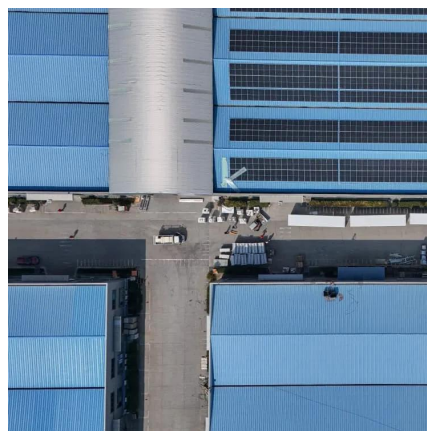
[Learn More](#)



[Does a Bigger Inverter Use More Power?](#)

The higher the power, the more electrical energy the 12V inverter can supply to electrical devices. However, the power of the inverter does not directly determine its energy consumption. The energy ...

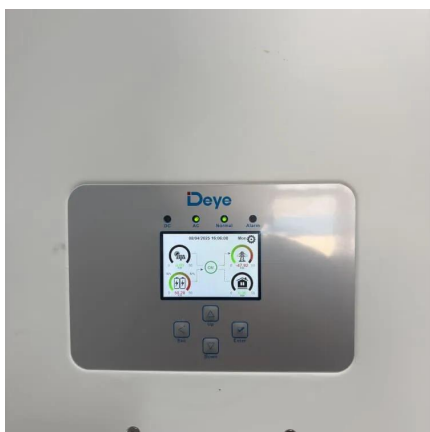
[Learn More](#)



[Inverter Myths Debunked: Power ...](#)

Discover the truth about inverter power consumption with Okaya's Smart Wave, Ultra Pure, and Power Max UPS series. Debunk myths about high electricity bills and learn how our energy-efficient technology ensures ...

[Learn More](#)



[Which Inverter Do You Need? , Power Guide ...](#)



Easily calculate the inverter you need. Explore EcoLine's practical power guide with peak usage, applications, and 12V/24V advice.

[Learn More](#)



Contact Us

For catalog requests, pricing, or partnerships, please visit:
<https://fundacjawandea-imk.pl>

Scan QR Code for More Information



<https://fundacjawandea-imk.pl>