

# When installing an inverter should I choose a 60v or 72v inverter





## When installing an inverter should I choose a 60v or 72v inverter

---



### networking

I'm having serious problems installing the Broadcom drivers for Ubuntu. It worked perfectly on my previous version, but now, it is impossible. What are the steps to install ...

[Learn More](#)

### apt

I'm trying to install R on my Ubuntu 22.10, by following this article However, when installing the repository, and then updating, I receive the message. E: The repository ...

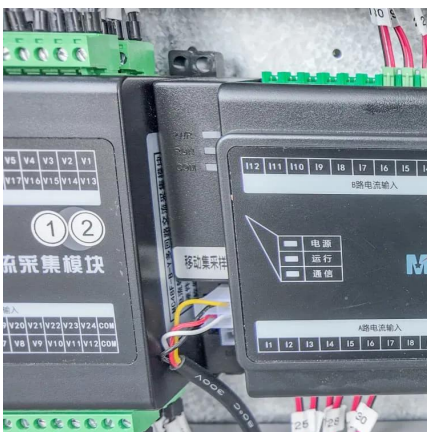
[Learn More](#)



### How do I install the latest version of Ubuntu on a MacBook

I'm interested in installing the latest version of Ubuntu (e.g. Ubuntu 24.04) on my MacBook. However, I'm a bit confused about the steps, especially since it's my first time trying ...

[Learn More](#)



### Error when installing WSL and Ubuntu on Windows 11

I'm attempting to install Ubuntu on a Windows 11 pc (build 22H2.1000.19H2.22H2.22H2.22H2) using WSL, but I'm receiving the following error: Ubuntu was installed from the Microsoft Store. Windows ...

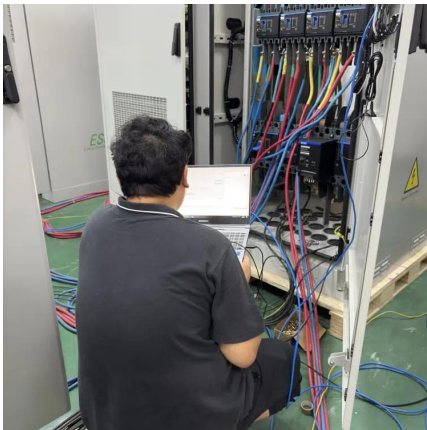
[Learn More](#)



#### [Installing Ubuntu with WSL](#)

Regardless, I think I'd start by trying to uninstall whatever comes up in the Start menu (if anything). Just right-click on the Ubuntu (or variant) and Uninstall. Then try installing ...

[Learn More](#)



#### [Installing MS SQL Server ODBC Driver on Ubuntu 24](#)

How do I install the Microsoft SQL Server ODBC drives on a Ubuntu 24 OS running on an intel 64bit system?

[Learn More](#)



#### **apt**

libgl1-mesa-glx has been a transitional package for a while and is now obsolete from Ubuntu 23.10 and onwards. Installing libgl1 and libglx-mesa0 instead of libgl1-mesa-glx ...

[Learn More](#)



#### [Error when installing Ubuntu 20.04 in VirtualBox](#)





I had the same issue with Windows 10 2004 update and VirtualBox 6.1, and Docker Desktop my case, Hyper-V was not enabled in the Windows Features, probably ...

[Learn More](#)



[Error installing Ubuntu 22.04 on WSL](#)

When attempting to install Ubuntu on WSL, I get a "Something went wrong" error: How should I troubleshoot/resolve this?

[Learn More](#)



**Black screen after installing Nvidia driver Ubuntu 20.04.02 ...**

After installing Nvidia driver from Software & Updates (Additional Drivers Tab) or Command line, Ubuntu did not start. (Stuck at system LOGO screen or it shows black screen). ...

[Learn More](#)



## Contact Us

For catalog requests, pricing, or partnerships, please visit:  
<https://fundacjawandea-imk.pl>



## Scan QR Code for More Information



<https://fundacja-wandea-imk.pl>