

What size inverter should I use for a 100A battery





Overview

What size inverter for a 100Ah battery?

In general, for a 100ah battery, a 1000 watt pure sine wave inverter will be a good suit. It provides enough power to operate a wide range of household or camping appliances. Now, let's figure out how to choose the right inverter size for a 100ah battery, based on what you need. How to Choose the Right Size Inverter for a 100Ah Battery?

.

Can I use a 2000 watt inverter with a 100 watt battery?

Yes, you can use a 2000 watt inverter with a 100ah battery. But if you use 2000 watts from your 12v 100ah battery, it will use up the battery faster and over time, it will also shorten the battery's life. Can I use a 1500W inverter with a 100Ah battery?

Yes, you can use a 1500 watt inverter with a 100ah battery.

Do I need a 24V inverter for a 100Ah battery?

If you have a 12V battery, you will need a 12V inverter, while a 24V battery requires a 24V inverter. Make sure to verify the voltage of your battery before selecting an inverter. When picking an inverter for your 100ah battery, it's best to choose a pure sine wave inverter.

How to calculate inverter size for 100 Ah battery?

Step to calculate inverter size for 100ah battery: Calculate the total load you intend to use and add 20% for a safety margin. Select the inverter type: Choose a pure sine wave inverter for superior performance and protect your appliances from potential damage.



What size inverter should I use for a 100A battery



[What size inverter can I run off a 100Ah lithium battery?](#)

What size inverter can I run off a 100Ah lithium battery? A 100Ah lithium battery can typically support an inverter up to 1,200W for 1 hour, assuming a 12V system. Actual runtime depends ...

[Learn More](#)

[What size inverter do you need for a 100ah ...](#)

After reading this, you'll know the steps that you should take in order to properly size the inverter that you need. What size inverter for a 100Ah battery? For appliances that use a relatively low amount of power, ...

[Learn More](#)



How to Determine What Size Inverter You Can Run Off a 100Ah Battery

Determining the appropriate size of an inverter that can be run off a 100Ah battery involves understanding both the power output of the inverter and the energy capacity of the battery. A ...

[Learn More](#)



[What Size Inverter for 100AH Lithium Battery?](#)

Optimizing inverter size for a 100AH lithium battery requires careful consideration--discover key factors that influence efficiency and performance.



[Learn More](#)



[What Inverter Size is Best for a 100Ah Battery?](#)

A 12V 100Ah battery can reasonably power an inverter up to 1000W-1200W for short periods. For continuous loads, 500W-800W is more efficient and battery-friendly.

[Learn More](#)



What Size Inverter Can I Run Off A 100Ah Battery? Maximize ...

To calculate the wattage, use the formula: $\text{Watts} = \text{Volts} \times \text{Amps}$. For a standard 12V battery, a 100Ah capacity translates to about 1200 watts ($12\text{V} \times 100\text{A}$). However, in ...

[Learn More](#)



[Sizing the Right Inverter for 100ah Battery](#)

Step to calculate inverter size for 100ah battery: Calculate the total load you intend to use and add 20% for a safety margin. Select the inverter type: Choose a pure sine wave ...

[Learn More](#)





[What Size Inverter Can I Run Off a 100Ah Battery? A ...](#)

A 100Ah battery signifies its capacity to deliver 100 ampere-hours of current. This capacity influences how long an inverter can run appliances before needing a recharge. ...

[Learn More](#)



[Sizing the Right Inverter for 100ah Battery](#)

What Size Inverter For A 100ah Battery? Pure Sine Wave Inverter --- The Ideal Choice
Inverter Size Chart
Tips For Using An Inverter
Keep Reading
In general, for a 100ah battery, a 1000 watt pure sine wave inverter will be a good suit. It provides enough power to operate a wide range of household or camping appliances. Now, let's figure out how to choose the right inverter size for a 100ah battery, based on what you need. See more on [dotwatts](#) portable solar expert

What Inverter Size is Best for a 100Ah Battery?

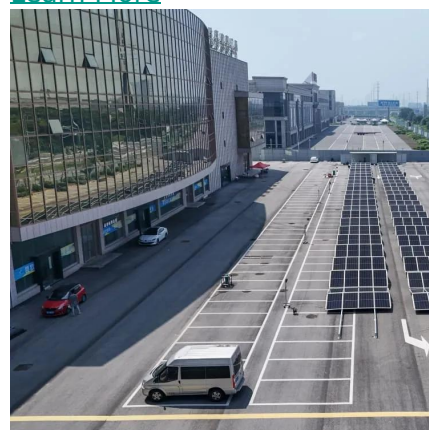
A 12V 100Ah battery can reasonably power an inverter up to 1000W-1200W for short periods. For continuous loads, 500W-800W is more efficient and battery-friendly.

[Learn More](#)

[What size inverter do you need for a 100ah battery?](#)

After reading this, you'll know the steps that you should take in order to properly size the inverter that you need. What size inverter for a 100Ah battery? For appliances that ...

[Learn More](#)





[What Size Inverter for 100AH Lithium Battery?](#)

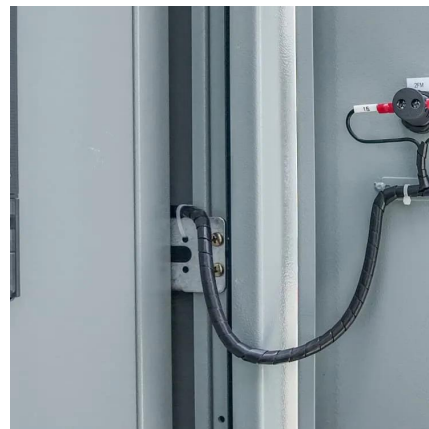
Optimizing inverter size for a 100AH lithium battery requires careful consideration--discover key factors that influence efficiency and performance.

[Learn More](#)

[What Size Inverter Do I Need for a 100Ah Battery?](#)

A 100Ah battery typically supports an inverter size up to about 1000 watts for standard applications, balancing efficient runtime and battery health. Selecting the right ...

[Learn More](#)



[What Size Inverter for 100Ah Battery? - MWXNE POWER](#)

Choosing the wrong size inverter can damage equipment, drain your battery too fast, or shut down your system unexpectedly. In this guide, we'll walk you through what size ...

[Learn More](#)



Contact Us

For catalog requests, pricing, or partnerships, please visit:
<https://fundacjawandea-imk.pl>



Scan QR Code for More Information



<https://fundacjawandea-imk.pl>