

What size battery should I use for a 15 kW inverter





Overview

What is the recommended battery size for an inverter?

Interpreting Results: Once you input the required data, the calculator will generate the recommended battery size in ampere-hours (Ah). For instance, if your power consumption is 500 watts, the usage time is 4 hours, and the inverter efficiency is 90%, the calculator might suggest a battery size of approximately 222 Ah.

How much battery should a 500 watt inverter use?

For instance, if your power consumption is 500 watts, the usage time is 4 hours, and the inverter efficiency is 90%, the calculator might suggest a battery size of approximately 222 Ah. Practical Tips: Ensure all input values are accurate to avoid skewed results.

What voltage should a 12V inverter run on?

The input voltage of the inverter should match the battery voltage. (For example 12v battery for 12v inverter, 24v battery for 24v inverter and 48v battery for 48v inverter Summary What Will An Inverter Run & For How Long?

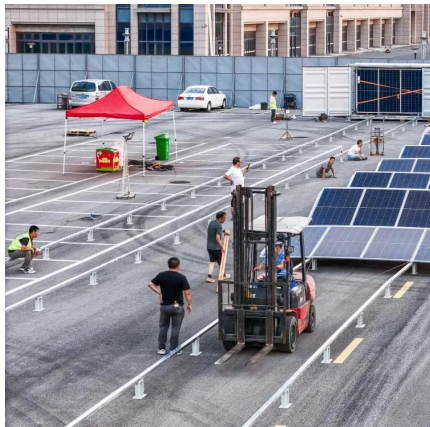
.

How much battery do I need to run a 3000-watt inverter?

You would need around 24v 150Ah Lithium or 24v 300Ah Lead-acid Battery to run a 3000-watt inverter for 1 hour at its full capacity Here's a battery size chart for any size inverter with 1 hour of load runtime Note! The input voltage of the inverter should match the battery voltage.



What size battery should I use for a 15 kW inverter



Calculate the Ideal Battery Size for Your Inverter with our Battery ...

For a quick and convenient way to calculate the required battery size for your inverter, you can use our Inverter Battery Size Calculator. Simply input the power requirement, ...

[Learn More](#)

[Solar Battery Size Guide: kWh, Inverter & Runtime](#)

Size your solar battery using load profile, critical loads, efficiency and DoD. Calculator matches kWh, inverter and runtime for code-compliant installs.

[Learn More](#)



[Solar Battery Size Calculator: What size ...](#)

What size solar panel array do you need for your home? And if you're considering battery storage, what size battery bank would be most appropriate? This article includes tables that provide an at-a-glance ...

[Learn More](#)



[Calculate Battery Size for Inverter Calculator](#)

The Calculate Battery Size for Inverter Calculator helps you determine the optimal battery capacity needed to support your inverter system. By inputting critical parameters such ...

[Learn More](#)



How to Calculate the Right Battery Size for Your Inverter ...

Calculating the correct battery size ensures that your inverter system can meet your power needs without leaving you in the dark during outages. An undersized battery may not provide enough ...

[Learn More](#)



[Calculate Battery Size For Any Size Inverter \(Using Our ...](#)

Pairing a right size capacity battery for an inverter can be a bit confusing for most the beginners So I have made it easy for you, use the calculator below to calculate the battery ...

[Learn More](#)



How to Size and Pair a Battery with Your Inverter in 2025: ...

Learn how to size and pair a battery with your solar inverter in 2025. Discover key ratios, examples, and Growatt solutions for optimal solar + storage system design.

[Learn More](#)



[Calculate Battery Size for Inverter Calculator](#)



The Calculate Battery Size for Inverter Calculator helps you determine the optimal battery capacity needed to support your inverter system. By inputting critical parameters such as power consumption, ...

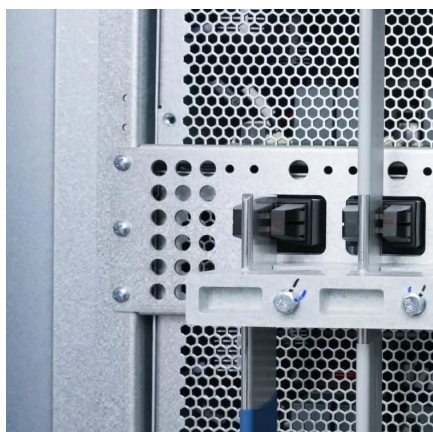
[Learn More](#)



[Solar Inverter & Battery Sizing Calculator](#)

Choosing the correct inverter and battery size is crucial for every microgrid system. Our Solar Inverter and Battery Sizing Calculator provides a simple and user-friendly solution.

[Learn More](#)



[Solar Inverter & Battery Sizing Calculator](#)

Choosing the correct inverter and battery size is crucial for every microgrid system. Our Solar Inverter and Battery Sizing Calculator provides a simple and user-friendly solution.

[Learn More](#)



[How Do I Match My Battery Size to My Inverter?](#)

How do I know what size battery I need for my inverter? A1: Calculate the total wattage of devices you'll run, then use a guideline of at least 100Ah per 1000 watts of inverter capacity.

[Learn More](#)



How to Choose the Right Inverter for a 15kWh 51.2V



Battery ...

When pairing a 15kWh, 51.2V battery with an inverter, it's essential to consider the battery's characteristics, load requirements, and system compatibility.

[Learn More](#)



[Solar Battery Size Calculator: What size battery do I need?](#)

What size solar panel array do you need for your home? And if you're considering battery storage, what size battery bank would be most appropriate? This article includes tables ...

[Learn More](#)



[How to Calculate the Right Battery Size for ...](#)

Calculating the correct battery size ensures that your inverter system can meet your power needs without leaving you in the dark during outages. An undersized battery may not provide enough backup power, while an ...

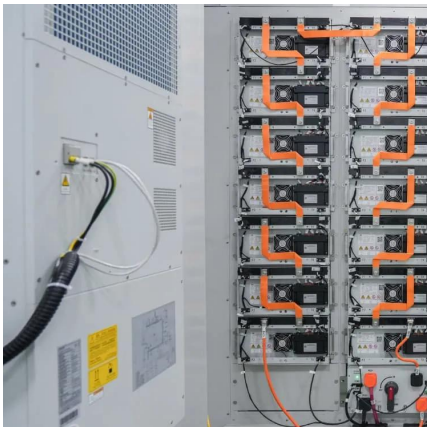
[Learn More](#)



[Solar Battery Size Guide: kWh, Inverter](#)

Size your solar battery using load profile, critical loads, efficiency and DoD. Calculator matches kWh, inverter and runtime for code-compliant installs.

[Learn More](#)





Contact Us

For catalog requests, pricing, or partnerships, please visit:
<https://fundacjawandea-imk.pl>

Scan QR Code for More Information



<https://fundacjawandea-imk.pl>