

What is the voltage of the base station lead-acid battery





Overview

What is the voltage of a lead acid battery?

The 24V lead-acid battery state of charge voltage ranges from 25.46V (100% capacity) to 22.72V (0% capacity). 48V Lead-Acid Battery Voltage Chart (4th Chart). The 48V lead-acid battery state of charge voltage ranges from 50.92 (100% capacity) to 45.44V (0% capacity). Lead acid battery is comprised of lead oxide (PbO₂) cathode and lead (Pb) anode.

What is a 48V lead acid battery?

48V Lead-Acid Battery Voltage Chart (4th Chart). The 48V lead-acid battery state of charge voltage ranges from 50.92 (100% capacity) to 45.44V (0% capacity). Lead acid battery is comprised of lead oxide (PbO₂) cathode and lead (Pb) anode. The medium of exchange is sulphuric acid. Most common example of lead-acid batteries are car batteries.

What is a 6V lead acid battery?

Here we see that a 6V lead acid battery has an actual voltage of 6V at a charge between 40% and 50% (43%, to be exact). The voltage spans from 6.37V at 100% charge to 5.71V at 0% charge. It is also important to note that lead batteries have a depth of discharge (DoD) close to about 50%.

What is a 24V lead acid battery?

Onward to 24 lead acid battery chart: We see the same lead-acid discharge curve for 24V lead-acid batteries as well; it has an actual voltage of 24V at 43% capacity. The 24V lead-acid battery voltage ranges from 25.46V at 100% charge to 22.72V at 0% charge; this is a 3.74V difference between a full and empty 24V battery.



What is the voltage of the base station lead-acid battery



[Lead-Acid Battery Voltage Chart For 6V, 12V, 24V, 48V ...](#)

Lead-acid batteries, like any other batteries, have a different voltage at different stages of charge. For example, a 12V lead acid battery has a 12.73V voltage at 100% charge ...

[Learn More](#)

[What is the voltage of a lead acid battery?](#)

In conclusion, the voltage of a lead acid battery is an important factor to consider when choosing a battery for your application. Whether you're looking for a battery for your car, electric golf cart battery, ...

[Learn More](#)



[Lead Acid Battery Voltage Chart \(12V, 24V, 48V\)](#)

Explore the lead acid battery voltage chart for 12V, 24V, and 48V systems. Understand the relationship between voltage and state of charge.

[Learn More](#)

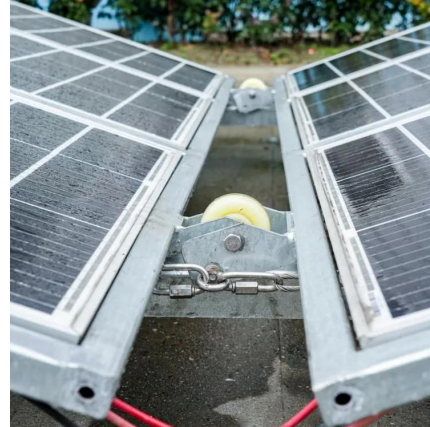


[Ultimate Guide to Battery Voltage Chart](#)

Need an accurate battery voltage chart? Explore different battery chemistry types like lead acid, Li-ion, and LiFePO4 & how they impact lifespan & performance.



[Learn More](#)



[Good Battery Voltage Guide for All Battery ...](#)

Learn the good voltage ranges for lead-acid, lithium-ion, LiFePO4, and other batteries to ensure performance, safety, and long life.

[Learn More](#)



[Lead-Acid Battery Voltage Chart For 6V, 12V, ...](#)

Lead-acid batteries, like any other batteries, have a different voltage at different stages of charge. For example, a 12V lead acid battery has a 12.73V voltage at 100% charge and an 11.36V voltage at 0% ...

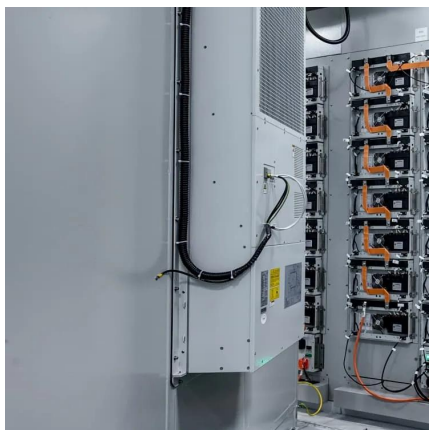
[Learn More](#)



[Good Battery Voltage Guide for All Battery Types](#)

Learn the good voltage ranges for lead-acid, lithium-ion, LiFePO4, and other batteries to ensure performance, safety, and long life.

[Learn More](#)





What is the voltage of a lead acid battery?

In conclusion, the voltage of a lead acid battery is an important factor to consider when choosing a battery for your application. Whether you're looking for a battery for your car, ...

[Learn More](#)



Ultimate Guide to Battery Voltage Chart

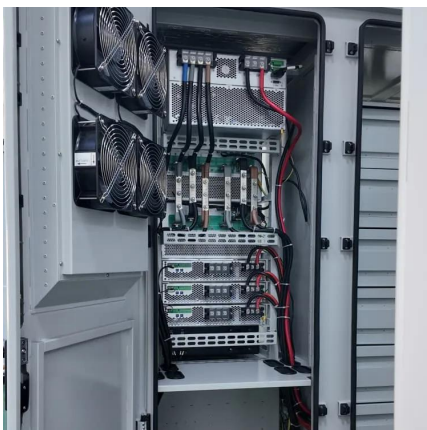
Need an accurate battery voltage chart? Explore different battery chemistry types like lead acid, Li-ion, and LiFePO4 & how they impact lifespan & performance.

[Learn More](#)

Ultimate Guide to Base Station Power Selection: Lithium vs. Lead-Acid

LiFePO4 is the preferred lithium battery chemistry for telecom base stations, known for its high performance and long lifespan. High energy density (120-180 Wh/kg) -- ...

[Learn More](#)



Lead Acid Battery: Everything you need to know

For example, a 12V sealed lead-acid battery in a fully charged state, the battery voltage is 12.88V, the following chart will introduce you to the charging state of sealed lead ...

[Learn More](#)



Discharge and battery capacity

The table below shows voltage of a lead-acid battery, regular lithium battery, AV line lithium battery and LiFePo4 (EDGE or PRO) battery. Depending on the chosen battery ...

[Learn More](#)



What Voltage is a Fully Charged Lead Acid Battery? Insights ...

A fully charged lead acid battery usually shows a voltage between 12.3 volts and 12.6 volts when at rest. During use, this voltage may change. To maintain battery health, keep ...

[Learn More](#)

Contact Us

For catalog requests, pricing, or partnerships, please visit:
<https://fundacjawandea-imk.pl>

Scan QR Code for More Information



<https://fundacjawandea-imk.pl>