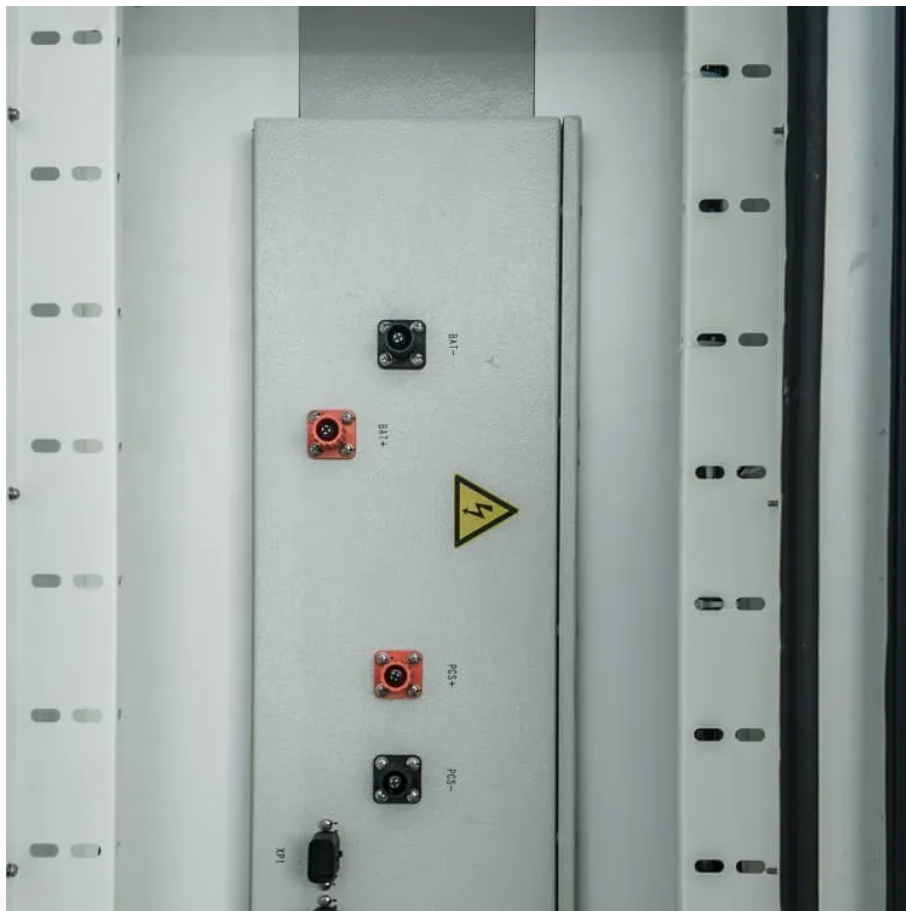


What is the use of 220 volt inverter





Overview

What is a 220V power inverter?

A 220 volt power inverter converts direct current to conventional alternating current. It can be used to run electronic equipment when there is no normal power supply. Sam Stores stocks a wide range of power inverters to match your needs.

What is a 220 volt converter used for?

The most common use for these converters is to change the voltage from 220 volts down to 110 volts, or from 110 volts up to 220 volts. When an electronic device, appliance or power tool was built for a specific voltage which is not available, the only way the device can be used is by converting the power up or down to the correct level.

What is a 240V power inverter used for?

240V or 240VAC 60Hz Power Inverters are great for pumps, industrial kitchen appliances, washers, dryers etc. We offer Free Shipping on most models!.

How do I get 220V from a 110 volt inverter?

You would have to get a step-up transformer (perhaps auto-wound for lower costs) to get 220 from a 110 inverter. Re: 220v from two inverters?

Aloha, Can I parallel two of the same MSW inverters @ 110v each and get 220v single phase?

If so, then would I tie the two neutrals together?

Reference my system below. thanks



What is the use of 220 volt inverter



Buyer's Guide for 220 Volt Inverters , 220 Volt Appliances , 240 Volt

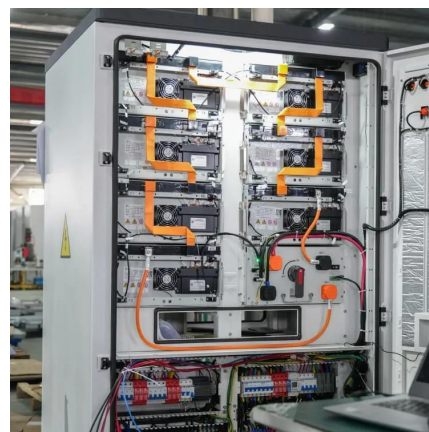
Buyer's Guide for 220 Volt Inverters Question1: What is a 220 volt power inverter? Answer 1: A 220 volt power inverter is a device that converts low-voltage DC (direct current) power to ...

[Learn More](#)

Understanding the Basics: How a 12V to 220V Inverter Works ...

Input Stage: The inverter receives 12V DC power from a battery. Oscillator: An oscillator generates a high-frequency signal that switches the DC input. Transformer: The ...

[Learn More](#)



[What Does An Inverter Do? Complete Guide To Power ...](#)

Learn what inverters do, how they convert DC to AC power, types available, and applications. Complete guide with sizing tips, safety advice, and expert insights.

[Learn More](#)



[220V Power Inverter Brief Introduction](#)

220v power inverter is a widely applicate transformer. With the power inverter, household appliances can be used in the car by connecting to the output. This article will lead you to ...

[Learn More](#)



Best 220 Volt Power Inverters for Reliable Home and Vehicle Use

Power inverters are essential devices that convert DC power from a car, RV, or solar battery into usable AC power for household appliances and electronics. Selecting a ...

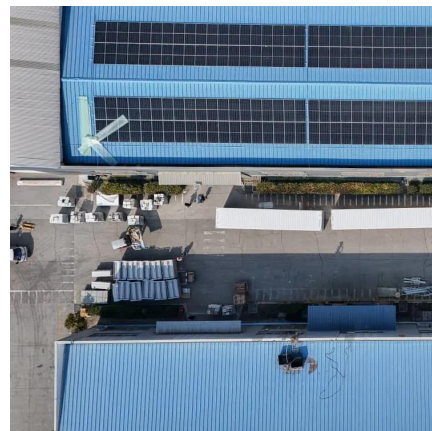
[Learn More](#)



[Are 220v inverters suitable for home use?](#)

For example, the Inverter 24v 220v 3600w is a pure sine wave inverter that can handle a significant load of appliances. Another consideration is the input voltage. Inverters come in ...

[Learn More](#)



220 Volt Inverter: The Ultimate Guide to Choosing the Right ...

The Ultimate Guide to 220 Volt Inverters In today's world, reliable power sources are essential for both home and outdoor activities. One solution that has gained popularity is ...

[Learn More](#)





[What Does An Inverter Do? Complete Guide ...](#)

Learn what inverters do, how they convert DC to AC power, types available, and applications. Complete guide with sizing tips, safety advice, and expert insights.

[Learn More](#)



[What Is the Use of Inverter in Home - The Truth Revealed](#)

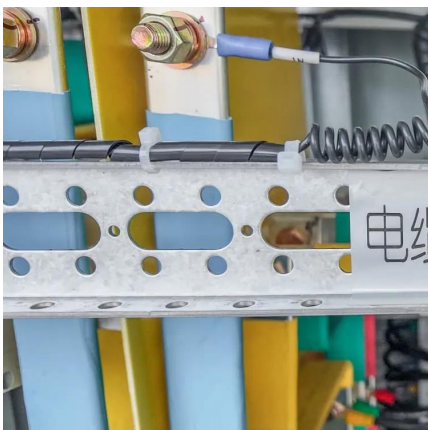
What is the use of an inverter at home? Discover why millions rely on it for seamless power backup--don't let outages disrupt your routine.

[Learn More](#)

[What Is the Use of Inverter in Home - The ...](#)

What is the use of an inverter at home? Discover why millions rely on it for seamless power backup--don't let outages disrupt your routine.

[Learn More](#)



[What is the use of Inverter](#)

Inverters are incredibly important devices that make it possible to use various power sources effectively in our everyday lives. Whether you're harnessing solar power, using backup batteries, or just ...

[Learn More](#)



[What is a 220V Inverter? - Ova](#)

A 220V inverter is a power electronic device that converts direct current (DC) power into alternating current (AC) power at a voltage of approximately 220 volts.

[Learn More](#)



[What is the use of Inverter](#)

Inverters are incredibly important devices that make it possible to use various power sources effectively in our everyday lives. Whether you're harnessing solar power, using ...

[Learn More](#)

Contact Us

For catalog requests, pricing, or partnerships, please visit:
<https://fundacjawandea-imk.pl>

Scan QR Code for More Information



<https://fundacjawandea-imk.pl>