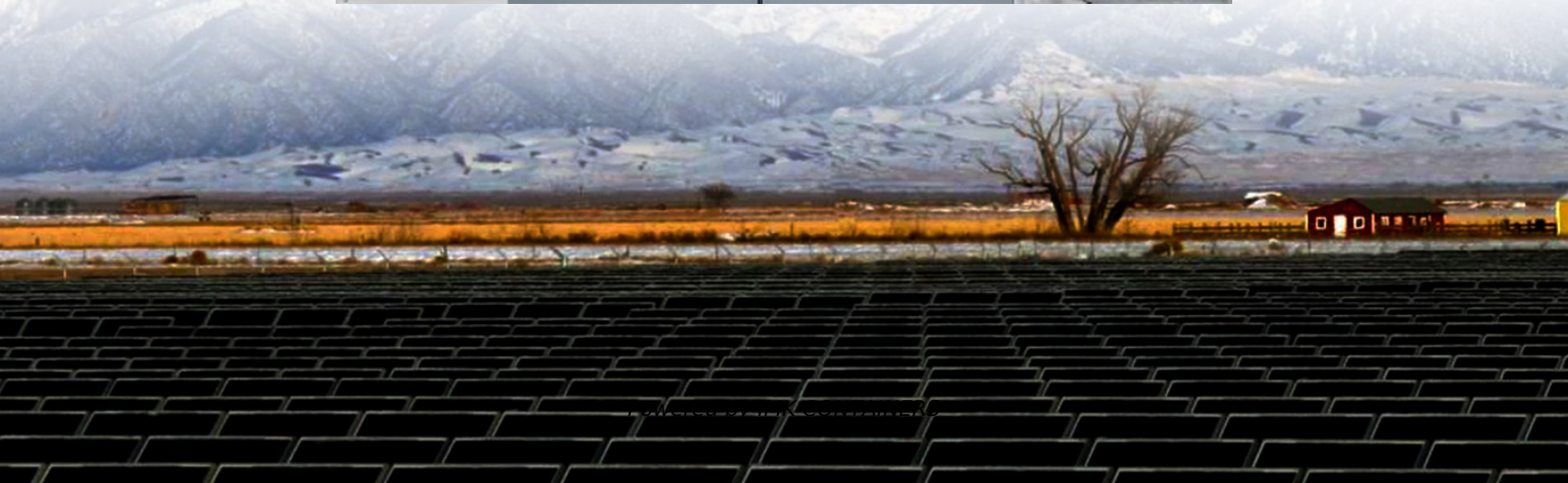


# What is the maximum capacity of the new energy battery cabinet





## Overview

---

What is battery maximum capacity?

Battery maximum capacity is foundational in lithium-ion cell design, manufacturing, and application. At the core of every battery-powered system—an electric vehicle, energy storage unit, or industrial equipment—lies the question: How much energy can this battery store and deliver reliably over time?

Part 1.

How many lithium battery cabinets can be connected in parallel?

A maximum of 15 SmartLi 2.0 lithium battery cabinets can be connected in parallel. When multiple cabinets are connected in parallel, only the master cabinet has an LCD. Easy capacity expansion: Batteries can be added along with load increase by stages. New and old battery cabinets can be connected in parallel.

How do manufacturers optimize and preserve battery maximum capacity?

Manufacturers use several techniques to optimize and preserve battery maximum capacity: Advanced cell design: Use of high-purity materials and optimized electrode structures. Protective coatings: Prevent degradation of electrode surfaces. Thermal management systems: Integrate cooling or heating to maintain optimal temperature.

What is the difference between design capacity and maximum capacity?

Design Capacity: A battery's theoretical capacity is designed to store when new. Maximum Capacity: The actual capacity the battery can store at any given time. As batteries age, maximum capacity decreases, diverging from the design capacity. This gap is a key metric in evaluating battery health and aging.



## What is the maximum capacity of the new energy battery cabinet

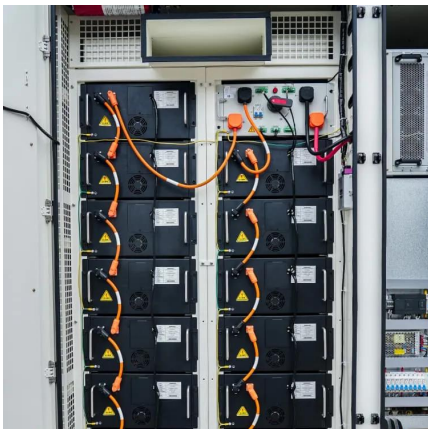
---



### World's 1st 8 MWh grid-scale battery with 541 kWh/m<sup>2</sup> energy ...

Envision Energy launched its latest energy storage system with a record energy density of 541 kWh/m<sup>2</sup>, setting a new industry standard.

[Learn More](#)



### EVE Showcases Groundbreaking 836kWh Split-Type Modular Cabinet ...

EVE debuted its 836kWh split-type modular cabinet at SNEC 2025. Scalable to 5MWh, it enables flexible deployment for overseas industrial storage. Mass production starts ...

### [CAPACITY OF NEW ENERGY BATTERY CABINET](#)

Battery cabinet new energy base station power generation Base station energy cabinet: a highly integrated and intelligent hybrid power system that combines multi-input power modules ...

[Learn More](#)



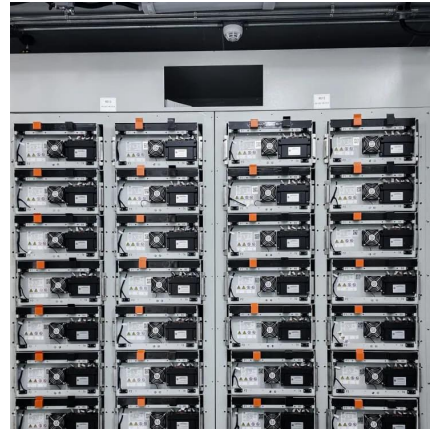
### Battery Cabinet

It provides a cabinet-level battery management system and supports a maximum of 15 cabinets connected in parallel to meet MW-level UPS backup power requirements.

[Learn More](#)



[Learn More](#)



[Battery Maximum Capacity: Why It Matters for Lithium Cells](#)

Battery maximum capacity defines how much energy a lithium cell can store and deliver reliably, key to EVs, storage units, and industrial use.

[Learn More](#)



[Battery Maximum Capacity: Why It Matters ...](#)

Battery maximum capacity defines how much energy a lithium cell can store and deliver reliably, key to EVs, storage units, and industrial use.

[Learn More](#)



[Maximum capacity of Huawei energy storage cabinet](#)

What are Huawei energy storage technologies? Huawei's energy storage technologies extend battery life, ensure safe operation and simplify maintenance and servicing (O& M) through ...

[Learn More](#)



[Energy Storage Cabinet\\_SOFAR](#)





SOFAR Energy Storage Cabinet adopts a modular design and supports flexible expansion of AC and DC capacity; the maximum parallel power of 6 cabinets on the AC side covers 215kW ...

[Learn More](#)



[What's the Maximum Capacity of Energy Storage ...](#)

Why Everyone's Obsessed with Energy Storage Containers a shipping container-sized unit that could power 300 homes for 12 hours. That's the maximum capacity of energy ...

[Learn More](#)



[Tesla battery Megafactory in Shanghai launches production](#)

Tesla's energy storage plant in Shanghai's Lingang Special Area commenced operation on Feb 11, as the assembly line started the production of the first Megapack unit. ...

[Learn More](#)



[Energy Storage Cabinet\\_SOFAR](#)

SOFAR Energy Storage Cabinet adopts a modular design and supports flexible expansion of AC and DC capacity; the maximum parallel power of 6 cabinets on the AC side covers 215kW-1290kW; the capacity of 3 battery ...

[Learn More](#)

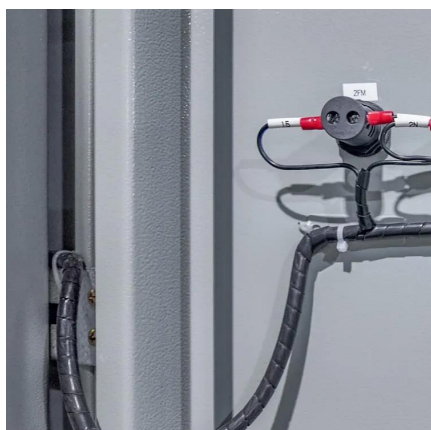


[What is the maximum battery energy storage capacity now?](#)



Maximum battery energy storage capacity stands at 450-500 Wh/kg for lithium-ion technologies, influenced by material advancements, operational conditions, and application ...

[Learn More](#)



[World's 1st 8 MWh grid-scale battery with...](#)

Envision Energy launched its latest energy storage system with a record energy density of 541 kWh/m<sup>2</sup>, setting a new industry standard.

[Learn More](#)



[Tesla battery Megafactory in Shanghai ...](#)

Tesla's energy storage plant in Shanghai's Lingang Special Area commenced operation on Feb 11, as the assembly line started the production of the first Megapack unit. The Megapack, which is an ...

[Learn More](#)



## Contact Us

---

For catalog requests, pricing, or partnerships, please visit:  
<https://fundacjawandea-imk.pl>



## Scan QR Code for More Information



<https://fundacja-wandea-imk.pl>