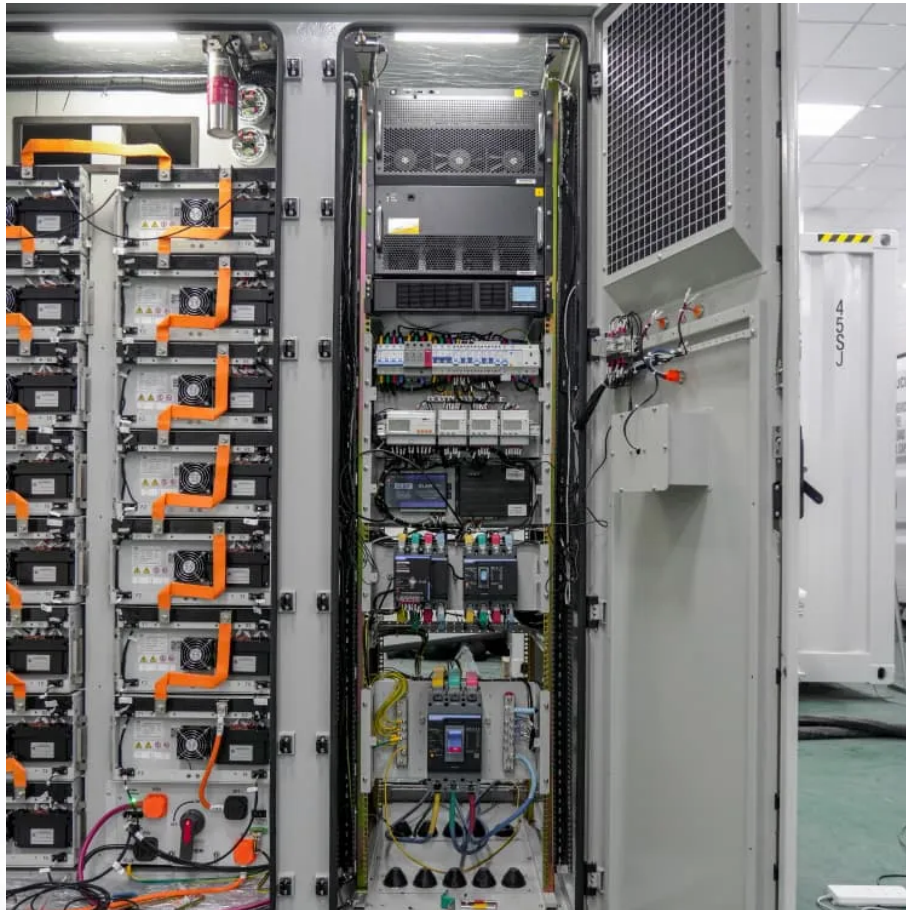


# What is rail transit flywheel energy storage





## What is rail transit flywheel energy storage

---



### [Sizewell c construction traffic](#)

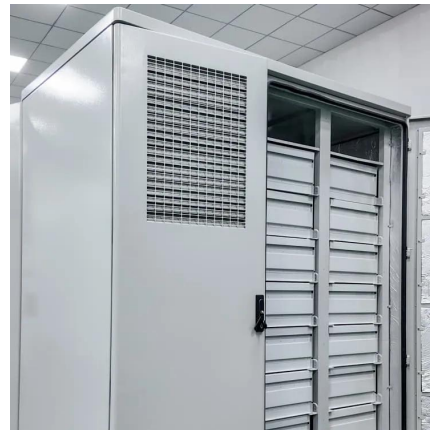
The Port of Ipswich has identified a 15-acre site on their West bank for storing the bulky building materials needed for the construction of Sizewell C. Sizewell C's transport ...

[Learn More](#)

### What's new

Does anybody know what is going on with the European Rail Timetable [formerly Thomas Cook]? Neither the Dec 2025 digital edition nor the Winter 2025-6 printed editions are ...

[Learn More](#)



### [Metrocar updates and withdrawals](#)

Any updates to this list would be greatly appreciated Credits: Contributors to this thread, the Tyne & Wear Metro Photography Facebook group and the Metrowatch Discord ...

[Learn More](#)



### [Rail & Sail ferry service to Belfast 'set up to fail'](#)

The number of passengers using a flagship rail and ferry service between Scotland and Northern Ireland has tumbled to 12 a day.



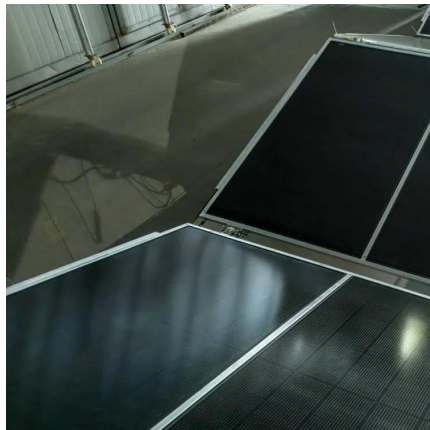
[Learn More](#)



### [Regulated Rail fares in England frozen until March 2027](#)

Rail fares in England next year are to be frozen for the first time in 30 years, the government has announced. The freeze until March 2027 will apply to regulated fares, which ...

[Learn More](#)



### **Hundreds of DfT civil servants to be moved to state-owned ...**

Hundreds of civil servants are being transferred from the Department for Transport to the state-owned rail operator as the government looks to cut Whitehall posts and overhaul ...

[Learn More](#)



### [Will East West rail provide any benefit to Wales.](#)

Emily Price A multi-billion pound rail project between Oxford and Cambridge will be classed as an England and Wales scheme, the UK Government has confirmed. This means ...

[Learn More](#)



## Contact Us

---

For catalog requests, pricing, or partnerships, please visit:  
<https://fundacjawandea-imk.pl>

### Scan QR Code for More Information



<https://fundacjawandea-imk.pl>