

What does the Green Base Station Transmission Node include





Overview

What is a green base station solution?

The green base station solution involves base station system architecture, base station form, power saving technologies, and application of green technologies. Using SDR-based architecture and distributed base stations is a different approach to traditional multiband multimode network construction.

What is a base station in a 5G network?

Base stations are the backbone of wireless networks, facilitating communication between mobile devices and the network infrastructure. In LTE (Long Term Evolution) networks, these base stations are known as eNodeBs (evolved Node Bs), while in 5G networks, they are referred to as gNodeBs (next-generation Node Bs).

What is next-generation NodeB in 5G?

One of the key players in this evolution is the gNB architecture, or Next-Generation NodeB, which serves as a critical component in 5G networks. The gNB is a fundamental element of 5G networks. It acts as the base station in the 5G system, facilitating wireless communication between user equipment (UE) and the core network. 1. Radio Unit (RU):.

What is a base station in LTE?

The base station is the physical node that transmits and receives RF signals on one or more antenna connectors. Note that a base station is not the same thing as an eNodeB, which is the corresponding logical node in the LTE Radio-Access Network. The terminal is denoted UE in the description below, as it is in all RF specifications.



What does the Green Base Station Transmission Node include



5G NR Initial Access: How does a device establish connection ...

The name comes from next-generation Node B, where Node B refers to a node acting as a base transceiver station (BTS). Simply put, the BTS is a station capable of ...

[Learn More](#)

Power Base Station

If an adjacent base-station transmission (UTRA or LTE) is detected under certain conditions, the maximum allowed Home base-station output power is reduced in proportion to how weak the ...

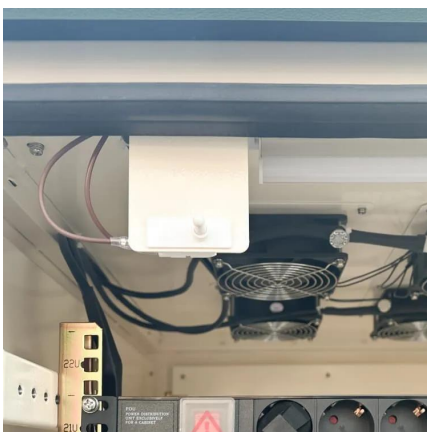
[Learn More](#)



Understanding the role of base stations (gNB vs eNB) in 5G ...

Introduction to Base Stations Base stations are the backbone of wireless networks, facilitating communication between mobile devices and the network infrastructure. In LTE ...

[Learn More](#)



[gNB Architecture: A Comprehensive Guide](#)

Introduction to gNB Architecture The gNB is a fundamental element of 5G networks. It acts as the base station in the 5G system, facilitating wireless communication ...



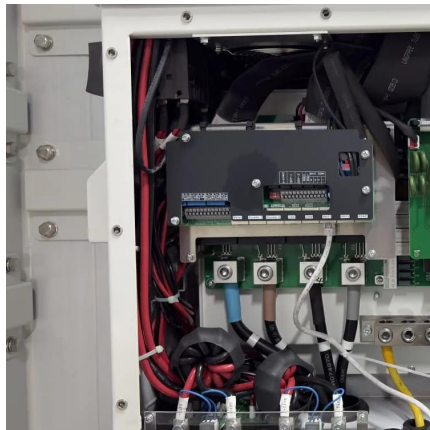
[Learn More](#)



[Communication Between gNB and UE Nodes](#)

Communication Between gNB and UE Nodes
Packet communication is central to the 5G new radio (NR) interface. This topic presents the communication flow between the 5G base station ...

[Learn More](#)



[Green Base Station Solutions and Technology](#)

The green base station solution involves base station system architecture, base station form, power saving technologies, and application of green technologies. Using SDR-based architecture and distributed base ...

[Learn More](#)



[What is a 5G base station?](#)

A 5G Base Station, also known as a gNB (Next-Generation NodeB), is a fundamental component of the fifth-generation (5G) Wireless Network Infrastructure. It serves as a Critical Node for the Radio Access ...

[Learn More](#)





[HyCell: Enabling GREEN Base Station Operations in ...](#)

Enabling GREEN Base Station Operations in Software-Defined Radio Access Networks Tao Zhao, Liumeng Wang, Xi Zheng, Sheng Zhou, and Zhisheng Niu

[Learn More](#)



[Green Base Station Solutions and Technology](#)

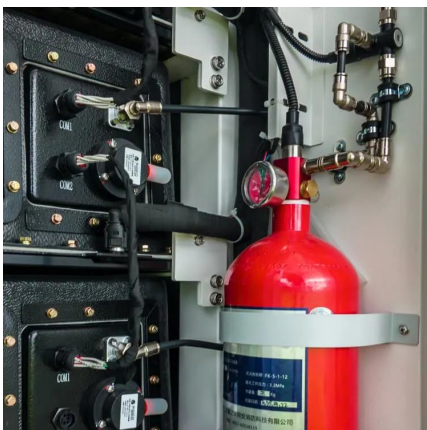
The green base station solution involves base station system architecture, base station form, power saving technologies, and application of green technologies. Using SDR ...

[Learn More](#)

[Evolution of Network Nodes: From IAB to IRS](#)

The IAB architecture is based on the centralized unit/distributed unit (CU/DU) split of the 5G base station (gNB), which is shown in Figure 1. An IAB node includes an MT ...

[Learn More](#)



[What is a 5G base station?](#)

A 5G Base Station, also Known as A GNB (Next-Generation NodeB), is a fundamental component of the fifth-generation (5G) Wireless Network Infrastructure. It serves ...

[Learn More](#)



[Communication Between gNB and UE Nodes](#)

Communication Between gNB and UE Nodes
Packet communication is central to the 5G new radio (NR) interface. This topic presents the communication flow between the 5G base station (gNB) and user ...

[Learn More](#)



[gNB Architecture: A Comprehensive Guide](#)

Introduction to gNB Architecture The gNB is a fundamental element of 5G networks. It acts as the base station in the 5G system, facilitating wireless communication between user equipment (UE) and the ...

[Learn More](#)

Contact Us

For catalog requests, pricing, or partnerships, please visit:
<https://fundacjawandea-imk.pl>

Scan QR Code for More Information



<https://fundacjawandea-imk.pl>