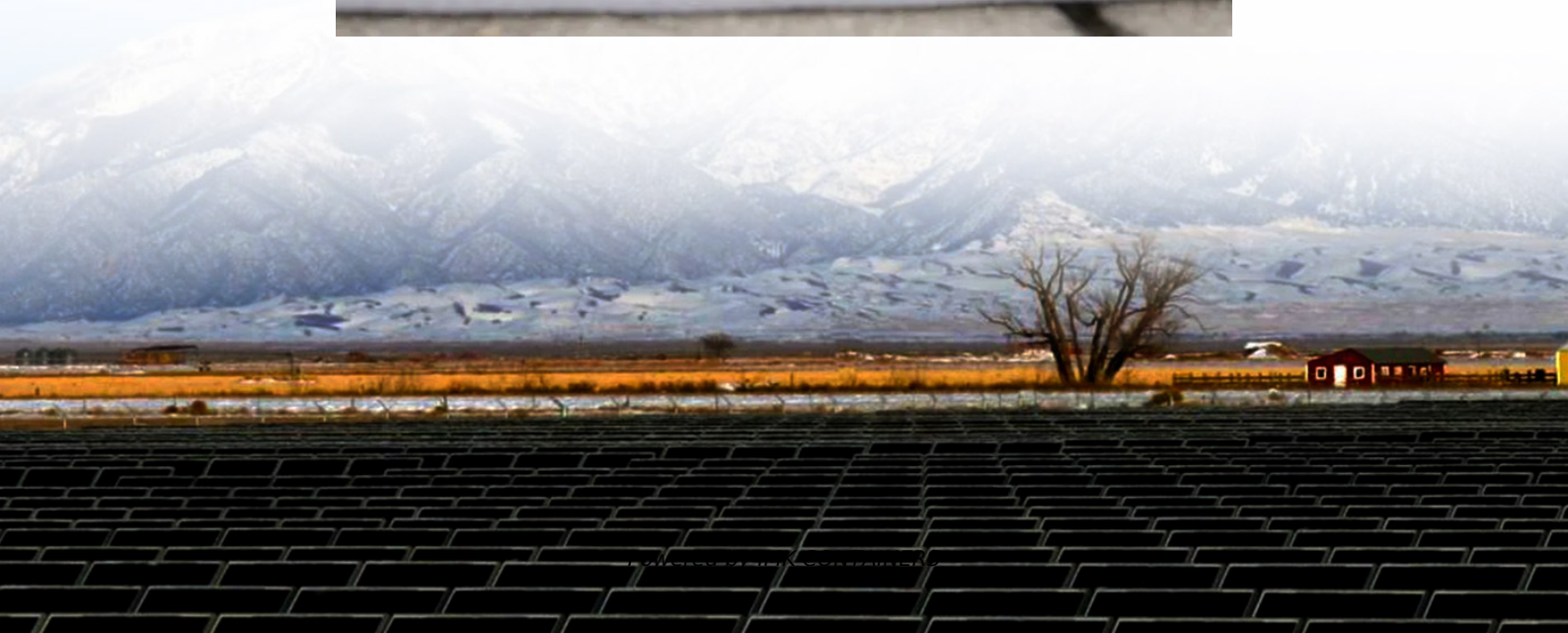


What does inverter e12 mean





Overview

What does a fault code mean on a solar inverter?

Each brand of solar inverter typically displays a fault code to indicate an issue with your solar system. These fault codes help to identify and troubleshoot problems that may occur with the inverter, grid connection, or other components of your solar system.

What are the error codes on my Sungrow inverter?

The error codes on your Sungrow inverter are your first and often last hint that something's amiss. They're codes that cover the scope of inverter issues, from grid disturbances to temperature anomalies. So first up, here's why understanding these five categories is crucial for maintaining your system's health: 1.

Why does my inverter have a fault code?

In addition to the common faults mentioned above, the inverter may also have some special fault codes due to different designs. For example, the power phase is wrong, the carrier frequency is out of range, the internal parameter setting is wrong, etc.

What if my inverter code is consistently displayed?

If this code is consistently displayed, contact EnviroGroup for a consultation. The inverter will automatically attempt to correct this error. If this code is consistently displayed, contact EnviroGroup for a consultation. If this code is consistently displayed, contact EnviroGroup for a consultation.



What does inverter e12 mean



[Complete list of inverter fault codes](#)

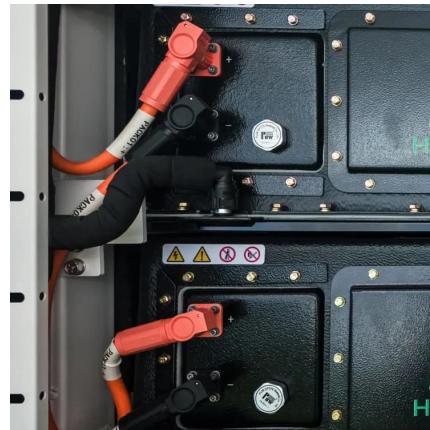
Undervoltage fault (UV) Corresponding to the overvoltage fault, an undervoltage fault occurs when the DC bus voltage is lower than the minimum voltage required for the normal operation of the inverter. This ...

[Learn More](#)

[Blueprint: Decoding Inverter Error Codes and ...](#)

Modern inverters are complex devices that communicate with various components, including monitoring systems, batteries, and the grid itself. A 'Communication Error' often means the inverter cannot properly ...

[Learn More](#)



Inverter Error Codes

Each brand of solar inverter typically displays a fault code to indicate an issue with your solar system. These fault codes help to identify and troubleshoot problems that may occur with the inverter, grid connection, or other ...

[Learn More](#)



My Transfer Inverter is showing an error code. What does it mean

Enerdrive , Dometic is an Australian-based provider of mobile power products, including lithium batteries and battery chargers, inverters and solar. The products and solutions are sold to a ...



[Learn More](#)



[5 Steps To Understanding Sungrow Inverter ...](#)

Unlock the secrets of your solar inverter with our 5-step guide to understanding and addressing Sungrow inverter fault codes. Keep your ...

[Learn More](#)



[MPPT Solar Charger Error Codes](#)

The Inverter can supply more power than the nominal power level for a short time. If the time is exceed the inverter stops. After three restarts followed by another overload within ...

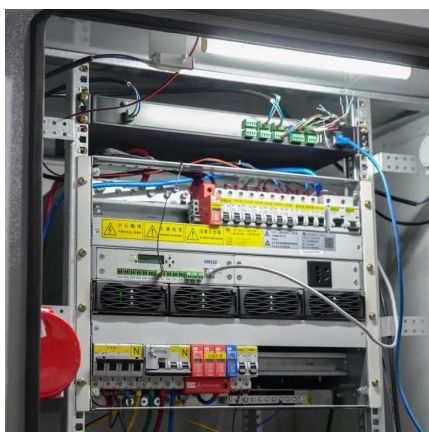
[Learn More](#)



Inverter Error Codes

Each brand of solar inverter typically displays a fault code to indicate an issue with your solar system. These fault codes help to identify and troubleshoot problems that may occur with the ...

[Learn More](#)



Blueprint: Decoding Inverter Error Codes and When to



Escalate

Modern inverters are complex devices that communicate with various components, including monitoring systems, batteries, and the grid itself. A 'Communication Error' often ...

[Learn More](#)



[Complete list of inverter fault codes](#)

Undervoltage fault (UV) Corresponding to the overvoltage fault, an undervoltage fault occurs when the DC bus voltage is lower than the minimum voltage required for the ...

[Learn More](#)



[Getting E12 Error on MPPT controller](#)



ST300 Series , E12, what does this message mean, and what ...

ST300 Series , E12, what does this message mean, and what can be done? If the error message E12 appears on the frequency converter display, it indicates an inverter overload.

[Learn More](#)



[Getting E12 Error on MPPT controller](#)

I was getting this today and I can't set the load to open my Gate. I ended up going back to my back up Renogy 20amp PWM controller. Does anybody think its a battery issue? It did work when I put my old ...

[Learn More](#)



I was getting this today and I can't set the load to open my Gate. I ended up going back to my back up Renogy 20amp PWM controller. Does anybody think its a battery issue? It ...

[Learn More](#)



Hitachi WJ200 Series -- understanding External Trip Features in Inverter

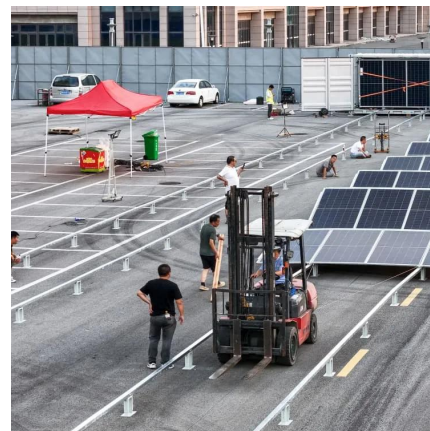
Hitachi WJ200 Series. Learn about the external trip feature in inverter systems, including error codes, reset procedures, and operational states for effective management.

[Learn More](#)

5 Steps To Understanding Sungrow Inverter Problems & Codes

Unlock the secrets of your solar inverter with our 5-step guide to understanding and addressing Sungrow inverter fault codes. Keep your system running smoothly.

[Learn More](#)



Contact Us

For catalog requests, pricing, or partnerships, please visit:
<https://fundacjawandea-imk.pl>



Scan QR Code for More Information



<https://fundacja-wandea-imk.pl>