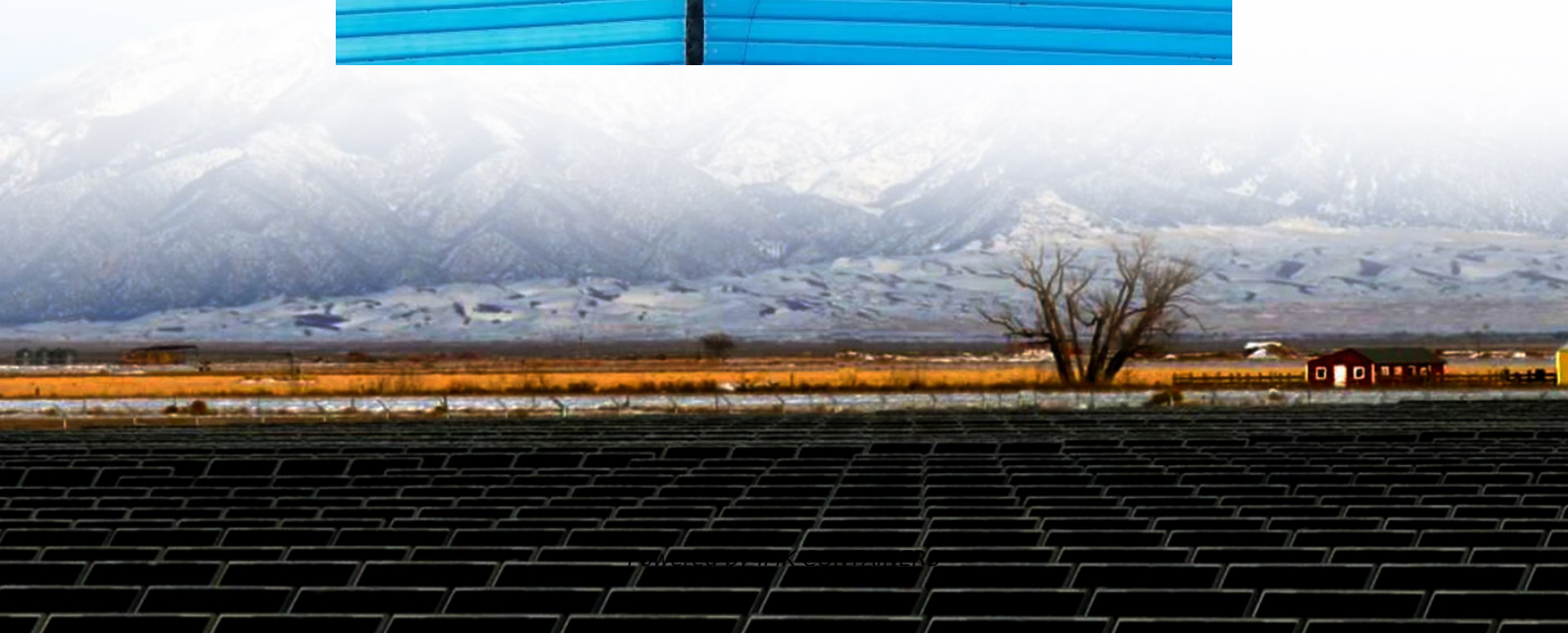
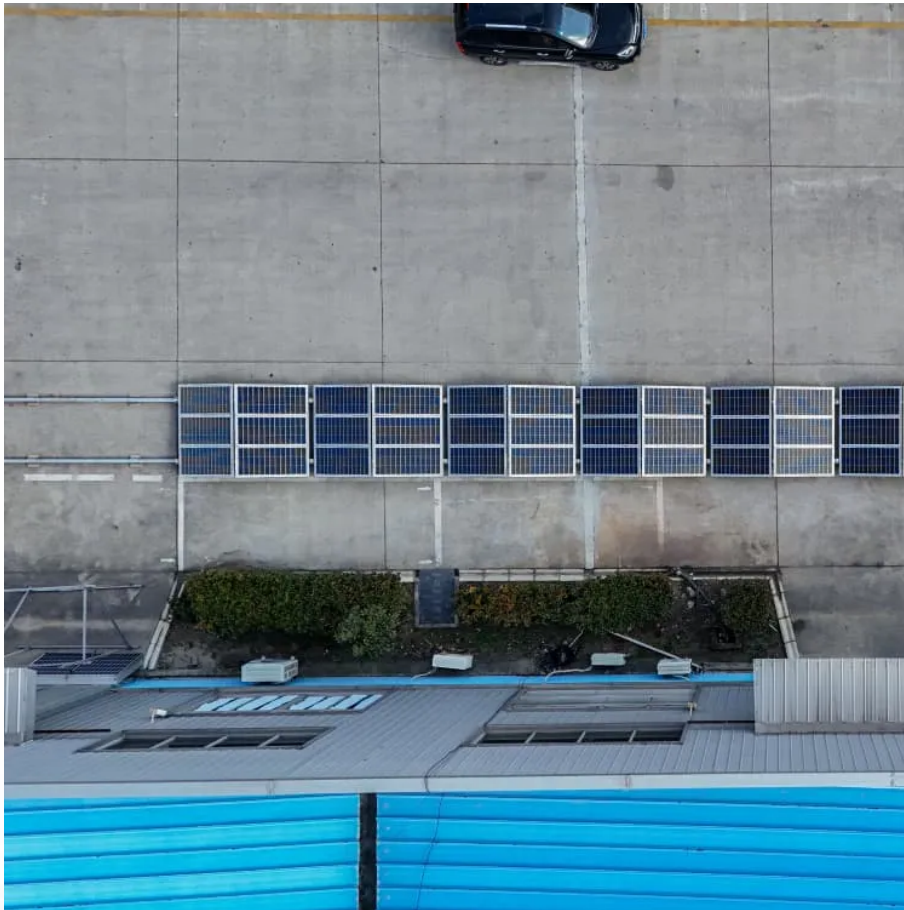


What does BMS battery pack mean





Overview

What is battery management system (BMS)?

Battery Management System (BMS) is the “intelligent manager” of modern battery packs, widely used in fields such as electric vehicles, energy storage stations, and consumer electronics.

What are the components of a battery management system (BMS)?

A typical battery management system (BMS) consists of the following main components: Battery Management Controller (BMC), Voltage and Current Sensors, Temperature Sensors, Balancing Circuit, and Power Supply Unit.

How does a BMS protect a battery pack?

Monitoring battery pack current and cell or module voltages is the road to electrical protection. The electrical SOA of any battery cell is bound by current and voltage. Figure 1 illustrates a typical lithium-ion cell SOA, and a well-designed BMS will protect the pack by preventing operation outside the manufacturer’s cell ratings.

What is a BMS used for?

A Battery Management System (BMS) is widely used in various applications such as electric vehicles (EVs), energy storage systems (ESS), uninterruptible power supplies (UPS), and industrial battery applications.



What does BMS battery pack mean



[Battery Management Systems \(BMS\): A ...](#)

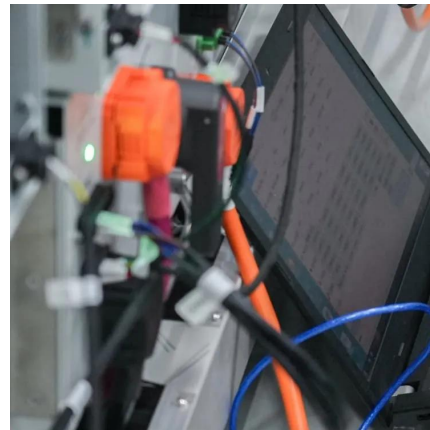
Battery Management Systems (BMS) With the growing adoption of electric vehicles (EVs), renewable energy storage, and portable electronic devices, the need for efficient and reliable Battery Management ...

[Learn More](#)

[What is a Battery Management System ...](#)

Battery management system (BMS) is technology dedicated to the oversight of a battery pack, which is an assembly of battery cells, electrically organized in a row x column matrix configuration to enable ...

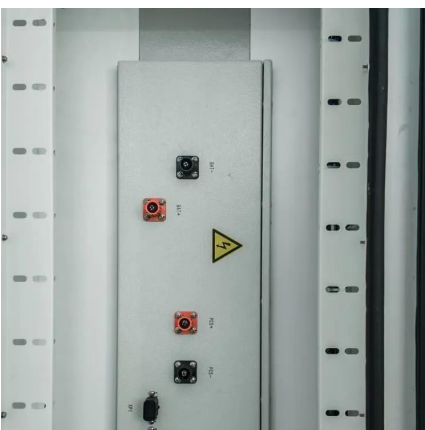
[Learn More](#)



[Battery Management System Guide: ...](#)

Comprehensive guide to Battery Management Systems (BMS), covering functions, circuits, components, and selection tips for safer, more reliable lithium-ion battery packs.

[Learn More](#)



[What Is BMS in a Battery Pack? And What ...](#)

A battery pack's battery management system (BMS) is arguably its most critical component. As the "brain" of the battery, the BMS continuously monitors and controls key parameters to optimize ...



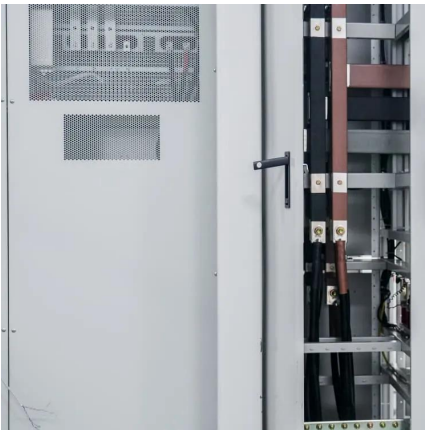
[Learn More](#)



[Understanding Battery Management Systems \(BMS\): The ...](#)

Discover the details of Understanding Battery Management Systems (BMS): The "Brain" Behind Every Lithium-Ion Battery at Hunan CTS Technology Co.,Ltd, a leading supplier ...

[Learn More](#)



[What Is BMS \(Battery Management System\) and Why Needs ...](#)

A Battery Management System (BMS) is the intelligent control unit that protects lithium batteries from overcharge, over-discharge, overheating, and short circuits. Learn how a ...

[Learn More](#)



[What is a Battery Management System \(BMS\)? Essential...](#)

A Battery Management System (BMS) safeguards lithium-ion batteries by monitoring voltage, current, and temperature, preventing overcharge, discharge, and thermal ...

[Learn More](#)



[What is a Battery Management System?](#)



A Battery Management System (BMS) is an electronic control unit that monitors and manages rechargeable battery packs to ensure safe operation, optimal performance, and extended lifespan. This sophisticated ...

[Learn More](#)



[Battery Management System \(BMS\) Detailed ...](#)

Battery Management System (BMS) is the "intelligent manager" of modern battery packs, widely used in fields such as electric vehicles, energy storage stations, and consumer electronics. Its core task ...

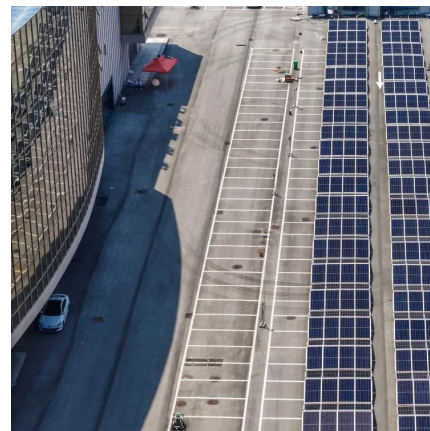
[Learn More](#)



[What Is a Battery Management System ...](#)

A Battery Management System (BMS) is an essential component in modern battery-powered applications, responsible for monitoring, protecting, and optimizing the performance of rechargeable ...

[Learn More](#)



Contact Us

For catalog requests, pricing, or partnerships, please visit:
<https://fundacjawandea-imk.pl>



Scan QR Code for More Information



<https://fundacjawandea-imk.pl>