

# What does BMS battery management system mean





## Overview

---

What is battery management system (BMS)?

Battery Management System (BMS) is the “intelligent manager” of modern battery packs, widely used in fields such as electric vehicles, energy storage stations, and consumer electronics.

What is a BMS used for?

A Battery Management System (BMS) is widely used in various applications such as electric vehicles (EVs), energy storage systems (ESS), uninterruptible power supplies (UPS), and industrial battery applications.

What are the components of a battery management system (BMS)?

A typical battery management system (BMS) consists of the following main components: Battery Management Controller (BMC), Voltage and Current Sensors, Temperature Sensors, Balancing Circuit, and Power Supply Unit.

How do battery management systems work?

Battery management system (BMS) is technology dedicated to the oversight of a battery pack, which is an assembly of battery cells, electrically organized in a row x column matrix configuration to enable delivery of targeted range of voltage and current for a duration of time against expected load scenarios.



## What does BMS battery management system mean

---



### What is a Battery Management System? Complete Guide to BMS ...

A Battery Management System (BMS) is an electronic control unit that monitors and manages rechargeable battery packs to ensure safe operation, optimal performance, and ...

[Learn More](#)

### [Battery Management System \(BMS\) Detailed ...](#)

Battery Management System (BMS) is the "intelligent manager" of modern battery packs, widely used in fields such as electric vehicles, energy storage stations, and consumer electronics. Its core task ...

[Learn More](#)



### [What Is a Battery Management System ...](#)

A Battery Management System (BMS) is an essential component in modern battery-powered applications, responsible for monitoring, protecting, and optimizing the performance of rechargeable ...

[Learn More](#)



### [What Is A BMS \(Battery Management System\)?](#)

A Battery Management System (BMS) safeguards lithium-ion batteries by monitoring voltage, current, and temperature, preventing overcharge, discharge, and thermal ...

[Learn More](#)



### [What Is a Battery Management System \(BMS\)?](#)

A Battery Management System (BMS) is an essential component in modern battery-powered applications, responsible for monitoring, protecting, and optimizing the ...

[Learn More](#)



### [What Is BMS \(Battery Management System\) and Why Needs ...](#)

A Battery Management System (BMS) is the intelligent control unit that protects lithium batteries from overcharge, over-discharge, overheating, and short circuits. Learn how a ...

[Learn More](#)



### [Battery Management System Guide: Functions, Circuits](#)

Comprehensive guide to Battery Management Systems (BMS), covering functions, circuits, components, and selection tips for safer, more reliable lithium-ion battery packs.

[Learn More](#)







### [What is a Battery Management System?](#)

Battery management system (BMS) is technology dedicated to the oversight of a battery pack, which is an assembly of battery cells, electrically organized in a row x column ...

[Learn More](#)



### [Battery Management Systems \(BMS\): A ...](#)

A BMS plays a crucial role in ensuring the optimal performance, safety, and longevity of battery packs. This comprehensive guide will cover the fundamentals of BMS, its key functions, architecture, ...

[Learn More](#)



### [Battery Management System \(BMS\) Detailed Explanation: ...](#)

Battery Management System (BMS) is the "intelligent manager" of modern battery packs, widely used in fields such as electric vehicles, energy storage stations, and consumer ...

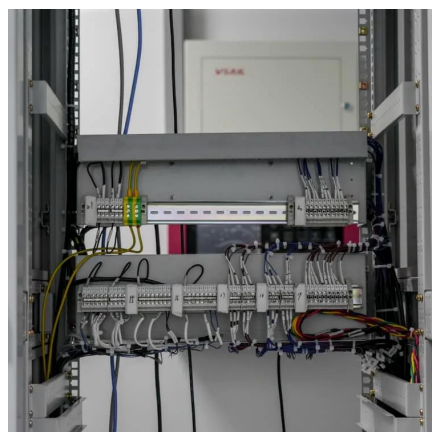
[Learn More](#)



### [What is a Battery Management System?](#)

A Battery Management System (BMS) is an electronic control unit that monitors and manages rechargeable battery packs to ensure safe operation, optimal performance, and extended lifespan. This sophisticated ...

[Learn More](#)





### [What Is A BMS \(Battery Management System\)?](#)

A battery management system is the "brain" of battery, which is critical for safety and operation. Here's a deep dive on the BMS.

[Learn More](#)



### [What is a Battery Management System?](#)

Battery management system (BMS) is technology dedicated to the oversight of a battery pack, which is an assembly of battery cells, electrically organized in a row x column matrix configuration to enable ...

[Learn More](#)

### [What is a Battery Management System \(BMS\)? Essential...](#)

A Battery Management System (BMS) safeguards lithium-ion batteries by monitoring voltage, current, and temperature, preventing overcharge, discharge, and thermal ...

[Learn More](#)



### [Understanding Battery Management Systems \(BMS\): The ...](#)

A battery management system is not just an add-on; it's a fundamental component for ensuring the safety, performance, and lifespan of any lithium-ion battery system. Investing ...

[Learn More](#)



### [Battery Management Systems \(BMS\): A Complete Guide](#)

A BMS plays a crucial role in ensuring the optimal performance, safety, and longevity of battery packs. This comprehensive guide will cover the fundamentals of BMS, its ...

[Learn More](#)



### [Battery Management System Guide: ...](#)

Comprehensive guide to Battery Management Systems (BMS), covering functions, circuits, components, and selection tips for safer, more reliable lithium-ion battery packs.

[Learn More](#)

## Contact Us

---

For catalog requests, pricing, or partnerships, please visit:  
<https://fundacjawandea-imk.pl>

**Scan QR Code for More Information**



<https://fundacjawandea-imk.pl>