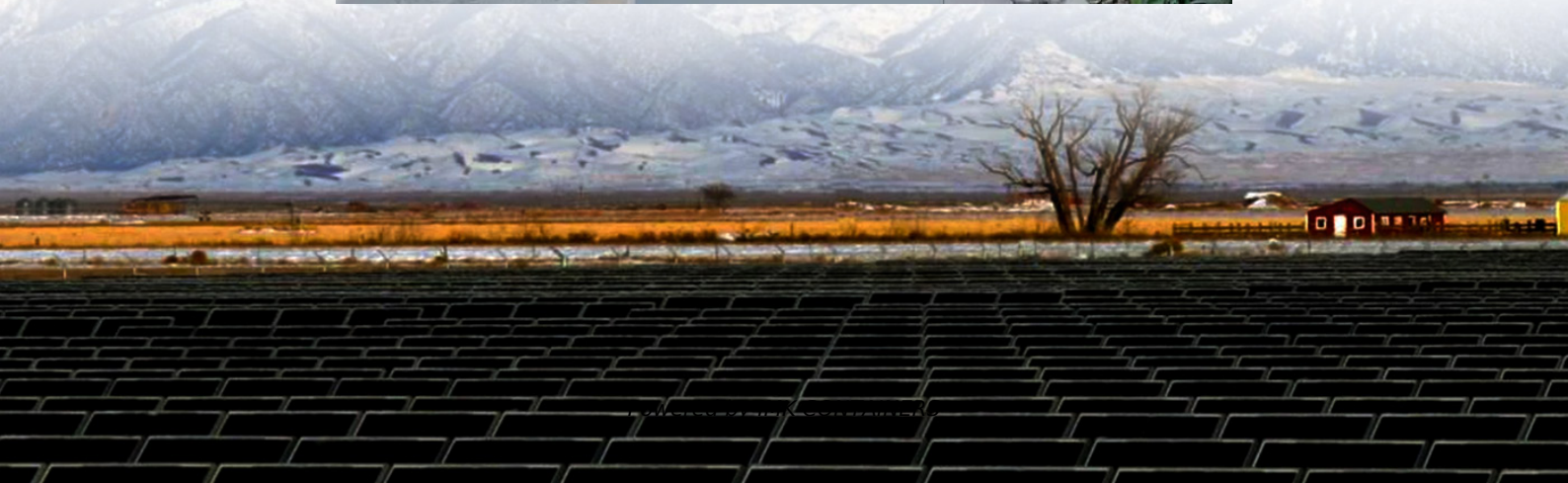


What are the main power-consuming devices in 5g base stations





Overview

How much power does a 5G station use?

The power consumption of a single 5G station is 2.5 to 3.5 times higher than that of a single 4G station. The main factor behind this increase in 5G power consumption is the high power usage of the active antenna unit (AAU). Under a full workload, a single station uses nearly 3700W.

Why does 5G use more power than 4G?

The data here all comes from operators on the front lines, and we can draw the following valuable conclusions: The power consumption of a single 5G station is 2.5 to 3.5 times higher than that of a single 4G station. The main factor behind this increase in 5G power consumption is the high power usage of the active antenna unit (AAU).

Should power consumption models be used in 5G networks?

This restricts the potential use of the power models, as their validity and accuracy remain unclear. Future work includes the further development of the power consumption models to form a unified evaluation framework that enables the quantification and optimization of energy consumption and energy efficiency of 5G networks.

What is 5G BS power consumption?

The 5G BS power consumption mainly comes from the active antenna unit (AAU) and the base band unit (BBU), which respectively constitute BS dynamic and static power consumption. The AAU power consumption changes positively with the fluctuation of communication traffic, while the BBU power consumption remains basically unchanged , , .



What are the main power-consuming devices in 5g base stations



Comparison of Power Consumption Models for 5G Cellular Network Base

This paper conducts a literature survey of relevant power consumption models for 5G cellular network base stations and provides a comparison of the models. It highlights ...

[Learn More](#)

[5G power consumption is 2.5 to 3 times of 4G](#)

Doubling power consumption means doubling electricity bills, which will undoubtedly greatly increase the operational pressure on operators. The expansion of power ...

[Learn More](#)



[Why does 5g base station consume so much power and how ...](#)

The power consumption of the 5G base station mainly comes from the AU module processing and conversion and high power-consuming high radio frequency signals, the ...

[Learn More](#)



[Why does 5g base station consume so much ...](#)

The power consumption of the 5G base station mainly comes from the AU module processing and conversion and high power-consuming high radio frequency signals, the extremely high-algorithm and high ...



[Learn More](#)



[How Much Power Does 5G Base Station Consume?](#)

The Silent Energy Crisis in Mobile Networks Have you ever wondered how much energy our hyper-connected world is consuming? 5G base stations, the backbone of next-gen ...

[Learn More](#)



What is the reason for the high energy consumption of 5G base ...

Let me explain it to you. The energy consumption of 5G base stations is mainly concentrated in four parts: base stations, transmission, power supply and air conditioning in ...

[Learn More](#)



[Front Line Data Study about 5G Power ...](#)

Facebook Twitter LinkedIn The two figures above show the actual power consumption test results of 5G base stations from different manufacturers, ZTE and HUAWEI, in Guangzhou and Shenzhen, by an ...

[Learn More](#)



[Energy Management of Base Station in 5G and B5G:](#)



[Revisited](#)

Since mmWave base stations (gNodeB) are typically capable of radiating up to 200-400 meters in urban locality. Therefore, high density of these stations is required for ...

[Learn More](#)



[What is the Power Consumption of a 5G Base Station?](#)

Compared to its predecessor, 4G, the energy demand from 5G base stations has massively grown owing to new technical requirements needed to support higher data rates ...

[Learn More](#)



[Energy consumption optimization of 5G base stations ...](#)

An energy consumption optimization strategy of 5G base stations (BSs) considering variable threshold sleep mechanism (ECOS-BS) is proposed, which includes the initial ...

[Learn More](#)



[5G power consumption is 2.5 to 3 times of 4G ...](#)

Doubling power consumption means doubling electricity bills, which will undoubtedly greatly increase the operational pressure on operators. The expansion of power supply equipment mentioned in the ...

[Learn More](#)



[Front Line Data Study about 5G Power Consumption](#)



Facebook Twitter LinkedIn The two figures above show the actual power consumption test results of 5G base stations from different manufacturers, ZTE and HUAWEI, in ...

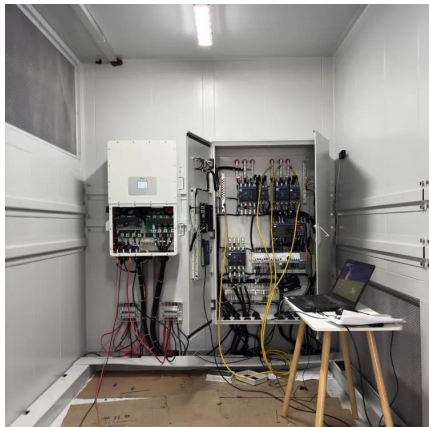
[Learn More](#)



[5G Base Stations: The Energy Consumption Challenge](#)

According to ABI Research analysis and certain infrastructure vendor statistics, the typical three 5G massive MIMO 64T64R AAUs at a site need to consume more than 2600 ...

[Learn More](#)



Contact Us

For catalog requests, pricing, or partnerships, please visit:
<https://fundacjawandea-imk.pl>

Scan QR Code for More Information



<https://fundacjawandea-imk.pl>