

What are the home base station communication devices





Overview

What is a base station in a telecommunications network?

A base station is a critical component in a telecommunications network. A fixed transceiver that acts as the central communication hub for one or more wireless mobile client devices. In the context of cellular networks, it facilitates wireless communication between mobile devices and the core network.

Why is a base station important in wireless communication?

A base station is fundamental in wireless communication, because it facilitates the connection between your device and the wider network. Without base stations, mobile data and voice services would be impossible, as there would be no infrastructure to handle the transmission of signals.

What is a base station and how does it work?

A base station is a fixed point of communication between mobile devices and the wider telecom network. It transmits and receives radio signals, enabling your phone to access voice, data, and internet services. Together, thousands of base stations form a seamless web of coverage known as a cellular network. How Does It Work?

.

Why are base stations important?

Base stations are the backbone of wireless communication networks, playing a pivotal role in signal transmission, network reliability, and high-speed data connectivity. As technology evolves, the importance of base stations will continue to grow, addressing new challenges and supporting the ever-expanding demand for wireless communication services.



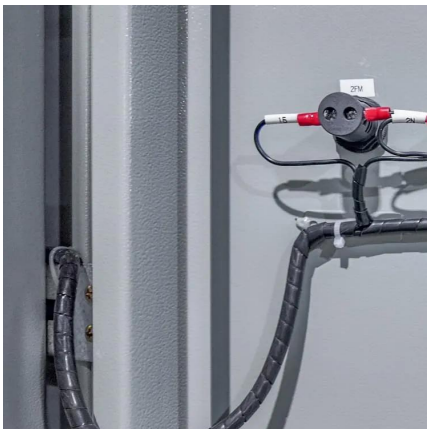
What are the home base station communication devices



[What Is A Base Station?](#)

A base station is an integral component of wireless communication networks, serving as a central point that manages the transmission and reception of signals between ...

[Learn More](#)



Home Base Station

A home base station is defined as a type of base station that operators provide to subscribers, typically limited to members of a household, facilitating localized wireless communication. Al

...

[Base Station's Role in Wireless Communication Networks](#)

What is a base station? A base station is a critical component of wireless communication networks. It serves as the central point of a network that connects various devices, such as ...

[Learn More](#)



[What are Base Station in Telecommunications?](#)

A base station connects your phone to the network. It acts as a hub between mobile devices and the core system.

[Learn More](#)



[Learn More](#)



[What Is a Home Base Station for Smart Devices?](#)

Define the smart home base station: the central brain that manages device communication, local automation, and specialized IoT protocols like Z-Wave.

[Learn More](#)



[What Does a Base Station Do and Why Is It Essential for ...](#)

A base station is a fixed point of communication between mobile devices and the wider telecom network. It transmits and receives radio signals, enabling your phone to access ...

[Learn More](#)



What Is the Role of a Base Station in Wireless Communication?

Base stations are the backbone of wireless communication networks, playing a pivotal role in signal transmission, network reliability, and high-speed data connectivity. As ...

[Learn More](#)

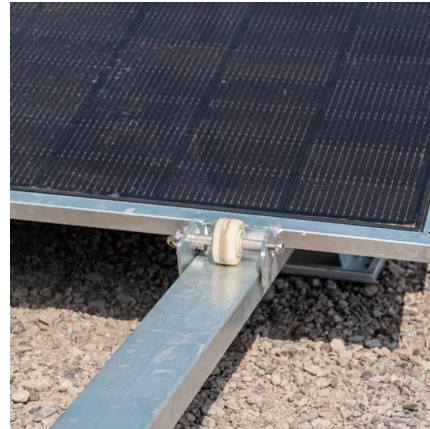




Base Stations

Base stations are important in the cellular communication as it facilitate seamless communication between mobile devices and the network communication. The demand for ...

[Learn More](#)



[What is a Base Station in Telecommunications?](#)

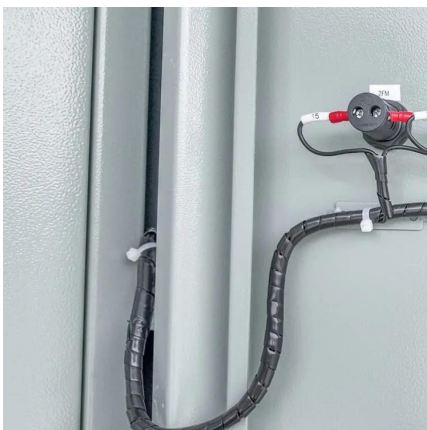
Discover the role and functionality of a base station in telecommunications networks. Learn how these critical components manage communication between mobile devices and the network, ...

[Learn More](#)

[What is a Base Station in ...](#)

Discover the role and functionality of a base station in telecommunications networks. Learn how these critical components manage communication between mobile devices and the network, ensuring robust connectivity.

[Learn More](#)



Understanding Base Stations: The Backbone of Wireless Communication

Conclusion Base stations are the backbone of modern wireless communication networks. They ensure that mobile devices can connect to the internet, make calls, and send ...

[Learn More](#)



Contact Us

For catalog requests, pricing, or partnerships, please visit:
<https://fundacjawandea-imk.pl>

Scan QR Code for More Information



<https://fundacjawandea-imk.pl>