

Weight of a single 21700 battery cell





Overview

What is 21700 battery?

21700 battery is one of the most popular and commonly found cells in the battery pack in electric vehicles, battery-powered construction equipment, portable power cutting/ drilling tools, the emergency torch, flashlight, etc. after 18650 battery cells.

How much does a 21700 cell weigh?

The 21700 cell weighs approximately 60–70 grams, depending on the manufacturer and specific chemistry. While slightly heavier than the 18650 cell, this weight increase is justified by its higher capacity and energy density.

What is the difference between a 21700 and a smaller battery?

One of the standout features of the 21700 is its higher capacity and energy density compared to smaller batteries. This allows it to power larger devices, such as electric vehicles and solar energy storage systems, with more reliable performance and fewer recharges. As mentioned earlier, the 21700 battery is 21mm in diameter and 70mm in length.

Why is a 21700 cell a good choice?

The larger size of the 21700 cell enables it to store more energy, making it ideal for applications requiring high power capacity, such as electric vehicles and industrial battery packs. Its dimensions also contribute to better thermal management, ensuring safer and more efficient operation.



Weight of a single 21700 battery cell



[Understanding the 21700 Battery and Its ...](#)

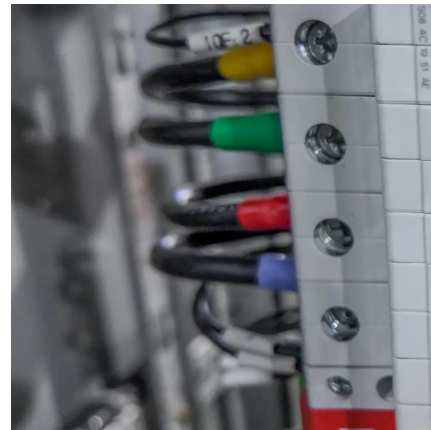
The larger size of the 21700 cell enables it to store more energy, making it ideal for applications requiring high power capacity, such as electric vehicles and industrial battery packs. Its dimensions also ...

[Learn More](#)

[Exploring the 21700 Battery: Your Ultimate ...](#)

A 21700 cell refers to an individual battery unit, while a 21700 pack is a configuration of multiple cells connected in series or parallel. The 21700 pack is typically what you find in larger, power-hungry devices like ...

[Learn More](#)



[21700 Battery Cell 3.7V 4800mAh Datasheet](#)

Specification Lithium ion Ternary Battery Cell 21700 4800mAh 3.7V without Protection Circuit Module (PCM) This data sheet describes the requirements and properties of ...

[Learn More](#)

[21700 Battery Specifications: Datasheet and ...](#)

21700 battery is one of the most popular and commonly found cells in the battery pack in electric vehicles, battery-powered construction equipment, portable power cutting/ drilling tools, the emergency torch, flashlight, etc. ...



[Learn More](#)



[Samsung INR21700-50G Battery Data, Model and Report](#)

The Batemo Cell Model of the lithium-ion battery cell Samsung INR21700-50G is a high-precision, physical cell model with global validity. As a digital twin it seamlessly integrates ...

[Learn More](#)



[21700 Cylindrical Lithium-Ion Battery Cell](#)

The 21700 cylindrical lithium-ion battery cell is a key specification in the lithium-ion battery field. With its balanced performance in capacity, energy density, and power output, it has become a ...

[Learn More](#)



[Samsung INR21700-50G Battery Data, Model...](#)

The Batemo Cell Model of the lithium-ion battery cell Samsung INR21700-50G is a high-precision, physical cell model with global validity. As a digital twin it seamlessly integrates into your research, development and ...

[Learn More](#)



[Exploring the 21700 Battery: Your Ultimate Guide](#)



A 21700 cell refers to an individual battery unit, while a 21700 pack is a configuration of multiple cells connected in series or parallel. The 21700 pack is typically what ...

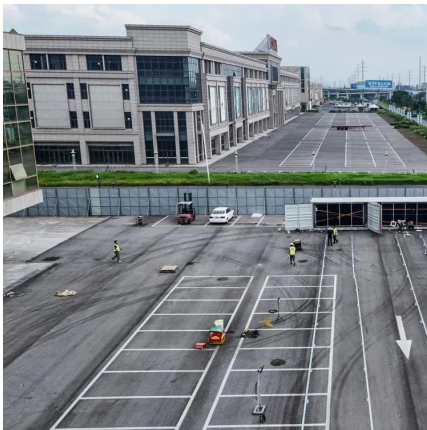
[Learn More](#)



[Understanding the 21700 Battery and Its Specifications](#)

The larger size of the 21700 cell enables it to store more energy, making it ideal for applications requiring high power capacity, such as electric vehicles and industrial battery ...

[Learn More](#)



[n CELL SPECIFICATIONS](#)

MODEL INR-21700-P45B CELL CHARACTERISTICS
Typical 4500 mAh Capacity Minimum 16.2 Wh
4300 mAh

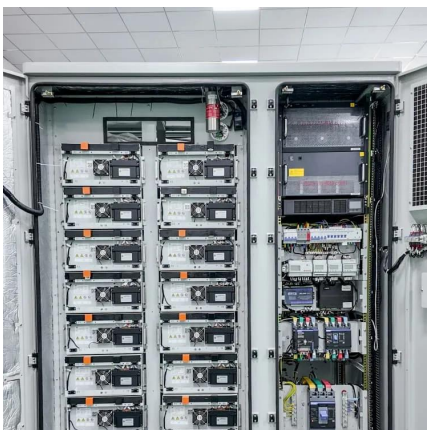
[Learn More](#)



[21700 Battery Specifications: Datasheet and Properties](#)

21700 battery is one of the most popular and commonly found cells in the battery pack in electric vehicles, battery-powered construction equipment, portable power cutting/ drilling tools, the ...

[Learn More](#)



[What Are the Key Specifications of the 21700 Cell?](#)



The 21700 lithium battery cell has emerged as a pivotal innovation in energy storage solutions. With its 21mm diameter and 70mm length, this cylindrical power source ...

[Learn More](#)



[Lithium Ion Rechargeable Battery Technical Information](#)

1.1.1 Model Number BMZ 21700 42PM 1.1.2 Cell Name BMZ 21700 42PM 1.2 Cell Shape and Weight 1.2.1 Cell Shape : Cylindrical 1.2.2 Size (with plastic tube) : Diameter ...

[Learn More](#)



Contact Us

For catalog requests, pricing, or partnerships, please visit:
<https://fundacjawandea-imk.pl>

Scan QR Code for More Information



<https://fundacjawandea-imk.pl>