

# Uninterruptible power supply does not supply power after power is turned on





## Overview

---

What it is: When you notice that your UPS isn't working after a power outage, the first troubleshooting step you should take is to check its incoming power supply. Remember: the UPS will drain its battery.

What is an uninterruptible power supply (UPS)?

An Uninterruptible Power Supply (UPS) is an electrical device that provides backup power to critical equipment in the event of a power outage or other power-related issues. An Uninterruptible Power Supply (UPS) is an electrical device that provides backup power to critical equipment in the event of a power outage or other power-related issues.

Is working on an uninterruptible power supply dangerous?

Working on an Uninterruptible Power Supply (UPS) can be dangerous and may cause serious injury or even death. It is important to take appropriate safety measures and follow proper procedures when working on a UPS. The following disclaimer is provided to ensure that anyone who is working on a UPS is aware of the risks involved:.

Why is my ups not working after a power outage?

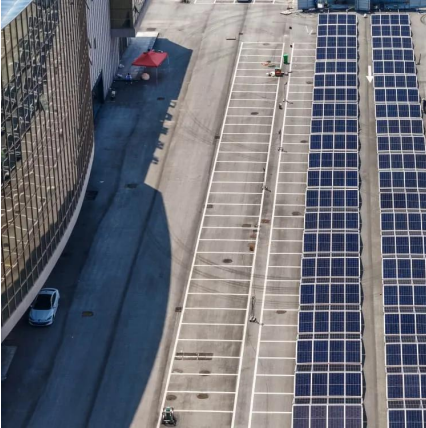
What it is: When you notice that your UPS isn't working after a power outage, the first troubleshooting step you should take is to check its incoming power supply. Remember: the UPS will drain its battery during a power outage. If the outage goes on for too long, the UPS will lose all its power and must recharge when power is restored.

Why is my ups not working after a power cut?

When that happens, the UPS will not work after the power cut. How to fix it: One way to solve this issue is to disconnect the UPS from its wall socket and leave it alone for a few minutes. You can plug the UPS back into the wall socket when you're confident that the power cut is over and your power supply has become stable.



## Uninterruptible power supply does not supply power after power is



### [Common UPS System Problems and Solutions](#)

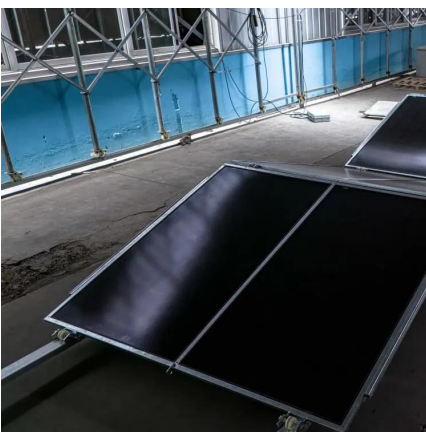
Even though the Uninterruptible Power Supply (UPS) system is a lifesaver when grid power is gone, it's bound to fail and disappoint sometimes. It chips in immediately to ...

[Learn More](#)

### [7 Common Causes of UPS Shut Downs & Power Outages](#)

Whether you have older or newer equipment, many UPS failure problems could be avoided with some preventive measures. There are several actions you can take to run your business smoothly during power outages and ...

[Learn More](#)



### **Common UPS failure**

UPS (Uninterruptible Power System) is mainly composed of rectifier, inverter (such as 2000w inverter or 3000w inverter), static bypass and energy storage device. It is an independent power supply with high ...

[Learn More](#)

### [Uninterruptible Power Supply Questions and Answers: ...](#)

Uninterruptible Power Supply Questions and Answers Uninterruptible Power Supply (UPS) systems are essential in maintaining continuous power to critical systems during outages or ...



[Learn More](#)



### [Why UPS Not Working After Power Cut? - Troubleshooting ...](#)

An uninterruptible power supply (UPS) is always ready to provide backup power to your devices when a power cut happens. However, some UPS units can stop working even ...

[Learn More](#)



### [UPS \(Uninterruptible Power Supply\) Repair Help: Learn How ...](#)

An Uninterruptible Power Supply (UPS) is an electrical device that provides backup power to critical equipment in the event of a power outage or other power-related issues.

[Learn More](#)



### [UPS \(Uninterruptible Power Supply\) Repair ...](#)

An Uninterruptible Power Supply (UPS) is an electrical device that provides backup power to critical equipment in the event of a power outage or other power-related issues.

[Learn More](#)





## [Uninterruptible Power Supply Problems \[and Solutions\]](#)

Whether you have older or newer equipment, many UPS failure problems could be avoided with some preventive measures. There are several actions you can take to run your business ...

[Learn More](#)



## **UPS uninterruptible power supply common fault repair method\_UPS**

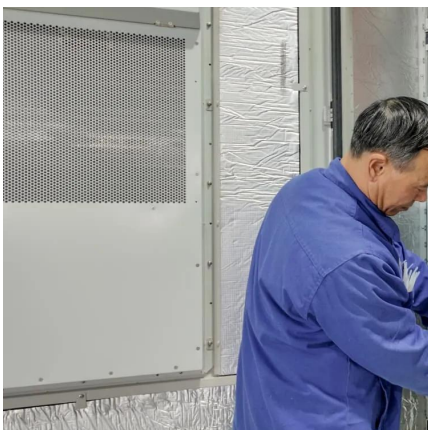
Frequently asked questions: After the UPS power is turned on, there is no display on the panel, and the UPS power does not work. Failure analysis: Judging from the failure ...

[Learn More](#)

## [7 Common Causes of UPS Shut Downs & Power Outages](#)

A UPS device is essential to prevent the loss of crucial data since a sudden power outage can force systems and computers to shut down without saving open files. A UPS ...

[Learn More](#)



## [Uninterruptible Power Supply Questions and ...](#)

Uninterruptible Power Supply Questions and Answers Uninterruptible Power Supply (UPS) systems are essential in maintaining continuous power to critical systems during outages or power fluctuations. Whether you're ...

[Learn More](#)



## [The 7 Most Common Causes of UPS Uninterruptible Power ...](#)

However, identifying power supply aging as the cause of UPS failures is not as straightforward as identifying other UPS issues. Contactors: Contactors can cause failures in ...

[Learn More](#)



## **The 7 Most Common Causes of UPS Uninterruptible Power Supply ...**

However, identifying power supply aging as the cause of UPS failures is not as straightforward as identifying other UPS issues. Contactors: Contactors can cause failures in ...

[Learn More](#)

### **Common UPS failure**

UPS (Uninterruptible Power System) is mainly composed of rectifier, inverter (such as 2000w inverter or 3000w inverter), static bypass and energy storage device. It is an ...

[Learn More](#)



## **Contact Us**

---

For catalog requests, pricing, or partnerships, please visit:  
<https://fundacjawandea-imk.pl>



## Scan QR Code for More Information



<https://fundacjawandea-imk.pl>