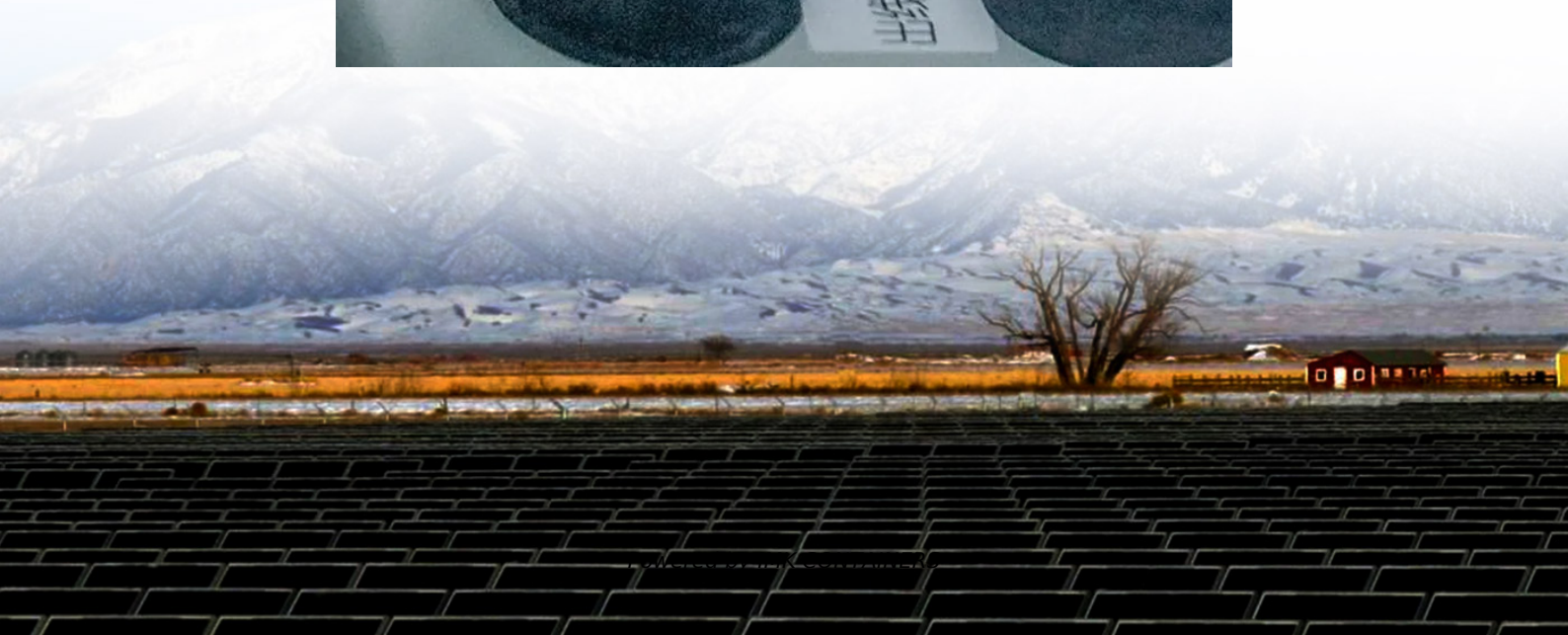


# Three-phase inverter application





## Overview

---

What are the applications of 3 phase inverter?

The applications of three phase inverter include the following. A three-phase inverter is mainly used for converting a DC input into an AC output. This inverter generates 3-phase AC power using a DC power source. It is used in high-power-based applications like HVDC power transmission.

What is the difference between a 3 phase and a single phase inverter?

In a 3 phase, the power can be transmitted across the network with the help of three different currents which are out of phase with each other, whereas in single-phase inverter, the power can transmit through a single phase. For instance, if you have a three-phase connection in your home, then the inverter can be connected to one of the phases.

What is a 3-phase inverter?

A DC -to -AC converter which uses a DC power source to generate 3-phase AC power is known as a 3-phase inverter. This type of inverter operates by using a power semiconductor switching topology.

What is a 3 phase square wave inverter?

A three-phase square wave inverter is used in a UPS circuit and a low-cost solid-state frequency charger circuit. Thus, this is all about an overview of a three-phase inverter, working principle, design or circuit diagram, conduction modes, and its applications. A 3 phase inverter is used to convert a DC i/p into an AC output.



## Three-phase inverter application

---



### [Three-Phase Inverter: A Comprehensive Guide](#)

Discover the benefits, working principles, and applications of a three-phase inverter for efficient solar energy conversion.

[Learn More](#)



### [What is a Three-Phase Inverter? , inverter](#)

In modern power systems, three-phase inverters, as a key power conversion device, play a vital role. Whether in industry, agriculture, or home, three-phase inverters provide stable and reliable AC power for ...

### [What is a Three-Phase Inverter? , inverter](#)

In modern power systems, three-phase inverters, as a key power conversion device, play a vital role. Whether in industry, agriculture, or home, three-phase inverters ...

[Learn More](#)



### **Three-Phase Inverters Explained: Working, Design, Features ...**

A three-phase inverter converts DC into three-phase AC power used in industries, electric vehicles, and renewable energy systems. It ensures steady, balanced, and efficient ...

[Learn More](#)



[Learn More](#)



[Three-Phase Inverter - Electricity - Magnetism](#)

A three-phase inverter is an electronic device that accepts DC power input and converts it into three-phase AC power. The primary application of three-phase inverters is in ...

[Learn More](#)



### Three Phase Inverter : Circuit, Working, Types & Its Applications

This Article Discusses an Overview of What is a Three Phase Inverter, Circuit, Working, Types, Advantages, Disadvantages & Its Applications.

[Learn More](#)



[Three-Phase Inverter - Electricity - Magnetism](#)

A three-phase inverter is an electronic device that accepts DC power input and converts it into three-phase AC power. The primary application of three-phase inverters is in high-power systems such as ...

[Learn More](#)



[What is Three Phase Inverter and How Does It Work](#)



Unlocking the potential of three phase inverter:  
Explore their working principles, advantages, and  
applications in renewable energy and beyond.

[Learn More](#)



[Three Phase Inverter : Circuit, Working, Types ...](#)

This Article Discusses an Overview of What is a  
Three Phase Inverter, Circuit, Working, Types,  
Advantages, Disadvantages & Its Applications.

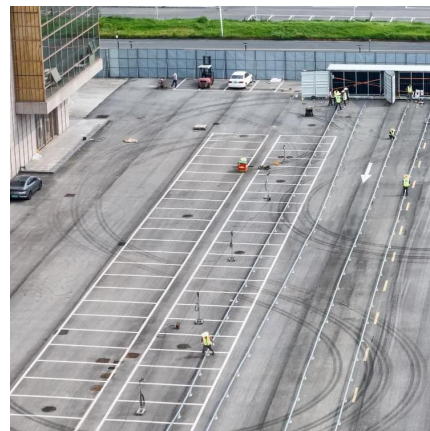
[Learn More](#)



[Three Phase Inverter : Circuit, Working and Its Applications](#)

What is Three Phase Inverter? Definition: We  
know that an inverter converts DC to AC. We  
have already discussed different types of  
inverters. A three-phase inverter is used to  
change the DC ...

[Learn More](#)



### 3-Phase Inverter

In essence, a 3-phase inverter is a crucial  
component for efficiently converting DC power  
into 3-phase AC power needed for various  
applications, especially in renewable energy ...

[Learn More](#)



[Three-phase inverter reference design for 200-480VAC...](#)



Three-phase inverter reference design for 200-480 VAC drives with opto-emulated input gate drivers Description This reference design realizes a reinforced isolated three-phase ...

[Learn More](#)



[Three-Phase Inverters](#)

For three-phase applications including motor drives, UPSs, and grid-tied solar inverters, the three-phase full-bridge inverter topology is a frequently used design.

[Learn More](#)



## Contact Us

For catalog requests, pricing, or partnerships, please visit:  
<https://fundacjawandea-imk.pl>

**Scan QR Code for More Information**



<https://fundacjawandea-imk.pl>