

# Three-phase industrial inverter





## Overview

---

What is a three-phase inverter?

Modern electronic systems cannot function without three-phase inverters, which transform DC power into three-phase AC power with adjustable amplitude, frequency, and phase difference. They are essential in several applications, including as power distribution networks, renewable energy systems, and industrial motor drives.

What is a 3 phase industrial hybrid inverter?

The 100kW 3-Phase Industrial Hybrid Inverter is a powerful and scalable solution designed to meet the demands of large industrial energy systems. Supporting parallel operation of up to 4 inverters, it can be expanded to an impressive 400kW capacity, making it ideal for high-power applications.

Why do utility companies use three phase inverters?

Utility companies use three phase inverters in energy storage systems and microgrid energy storage to manage voltage, frequency, and power flow. They are key in stabilizing renewable energy inputs like wind and solar power. Reliable power is essential for communication towers and server rooms.

Which industries use three-phase inverters?

Industries such as manufacturing, data centers, and large-scale commercial operations commonly use three-phase inverters to ensure stable and efficient power management. Moreover, they play a critical role in renewable energy systems, particularly in solar power installations. Three-phase inverters are employed in various sectors, including:



## Three-phase industrial inverter

---



### Three Phase Inverter

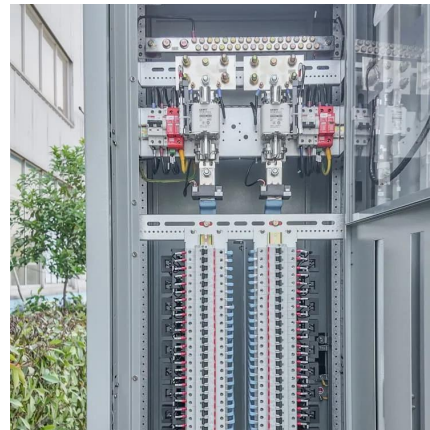
Solis is one of the world's largest and most experienced manufacturers of solar inverters supplying products globally for multinational utility companies, commercial & industrial rooftop projects, and residential solar systems.

[Learn More](#)

### Three Phase Inverter

Solis is one of the world's largest and most experienced manufacturers of solar inverters supplying products globally for multinational utility companies, commercial & industrial rooftop ...

[Learn More](#)



### [Three-Phase Inverter: A Comprehensive Guide](#)

In power electronics, a three-phase inverter is an essential device to convert DC (Direct Current) electricity into AC (Alternating Current) with three distinct phases. These ...

[Learn More](#)



### [Three-Phase Inverter: A Comprehensive Guide](#)

In power electronics, a three-phase inverter is an essential device to convert DC (Direct Current) electricity into AC (Alternating Current) with three distinct phases. These inverters are widely





utilized in industrial, ...

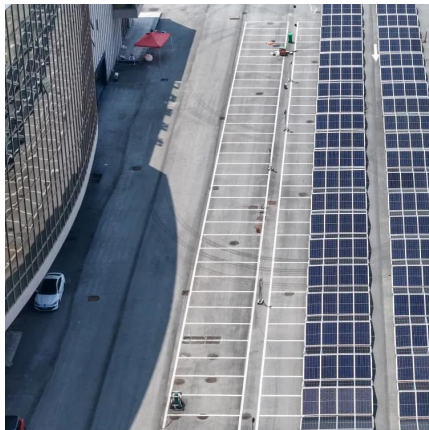
[Learn More](#)



### [What is Three Phase Inverter and How Does It Work](#)

In the world of modern energy systems, the three phase inverter plays a vital role in converting energy into a usable form. Whether in solar power setups, electric vehicles, or ...

[Learn More](#)



### [100KW 3-Phase Industrial Hybrid Inverter](#)

The 100kW 3-Phase Industrial Hybrid Inverter is a powerful and scalable solution designed to meet the demands of large industrial energy systems. Supporting parallel operation of up to 4 inverters, it can be ...

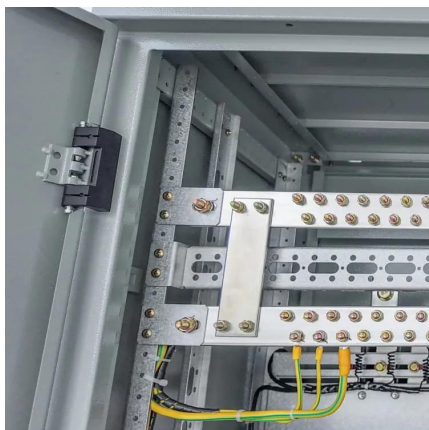
[Learn More](#)



### [Three Phase Commercial Inverters](#)

Three Phase Commercial Inverters Maximize energy production, safety and reliability with our range of easy-to-install inverters for small-medium size commercial projects.

[Learn More](#)





## I7000 Series 3 Phase Industrial Inverter

I7000 Series 3 Phase Industrial Inverter  
I7000-Z3G Series Ecowatt I7000 series industrial inverters can meet the requirements of high reliability, high safety and high stability in harsh ...

[Learn More](#)



## Industrial Inverters 3Ph-3Ph

Enventa 3-Phase In, 3-Phase Out Industrial Inverter - Precision Power for Heavy-Duty Applications The Enventa 3-Phase In, 3-Phase Out Industrial Inverter is a high-performance ...

[Learn More](#)



## 20KW~30KW Commercial Three Phase High ...

SSE-HH20K~30K-P3EU three-phase high voltage hybrid inverter is designed to meet commercial and industrial energy storage needs. The maximum DC voltage is 1000V, and the maximum PV input is 3\*36A d.c. Battery voltage ...

[Learn More](#)



## What is Three Phase Inverter and How Does It ...

In the world of modern energy systems, the three phase inverter plays a vital role in converting energy into a usable form. Whether in solar power setups, electric vehicles, or industrial equipment, three phase ...

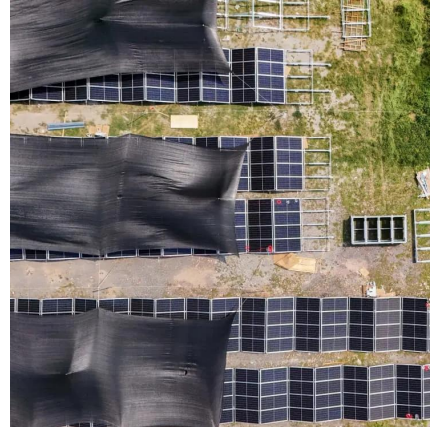
[Learn More](#)



## Three-Phase Inverters

Default DescriptionIntroduction Modern electronic systems cannot function without three-phase inverters, which transform DC power into three-phase AC power with adjustable amplitude, ...

[Learn More](#)



## Comparison of AC/DC Power-Conversion Topologies for ...

Overview: Existing AC/DC Topologies In this section, we're only going to discuss the boost topology, since that is the most common topology used for three-phase industrial ...

[Learn More](#)



## **20KW~30KW Commercial Three Phase High Voltage Hybrid Inverter**

SSE-HH20K~30K-P3EU three-phase high voltage hybrid inverter is designed to meet commercial and industrial energy storage needs. The maximum DC voltage is 1000V, and the maximum ...

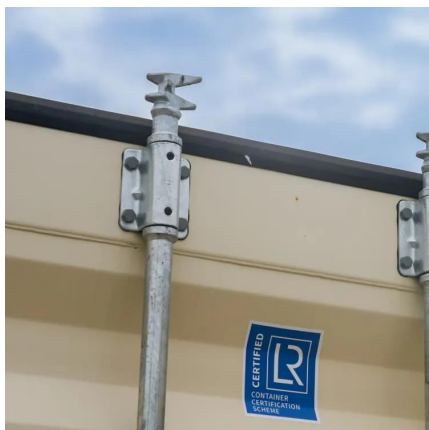
[Learn More](#)



## 100KW 3-Phase Industrial Hybrid Inverter

The 100kW 3-Phase Industrial Hybrid Inverter is a powerful and scalable solution designed to meet the demands of large industrial energy systems. Supporting parallel ...

[Learn More](#)





## Contact Us

---

For catalog requests, pricing, or partnerships, please visit:  
<https://fundacjawandea-imk.pl>

### Scan QR Code for More Information



<https://fundacjawandea-imk.pl>