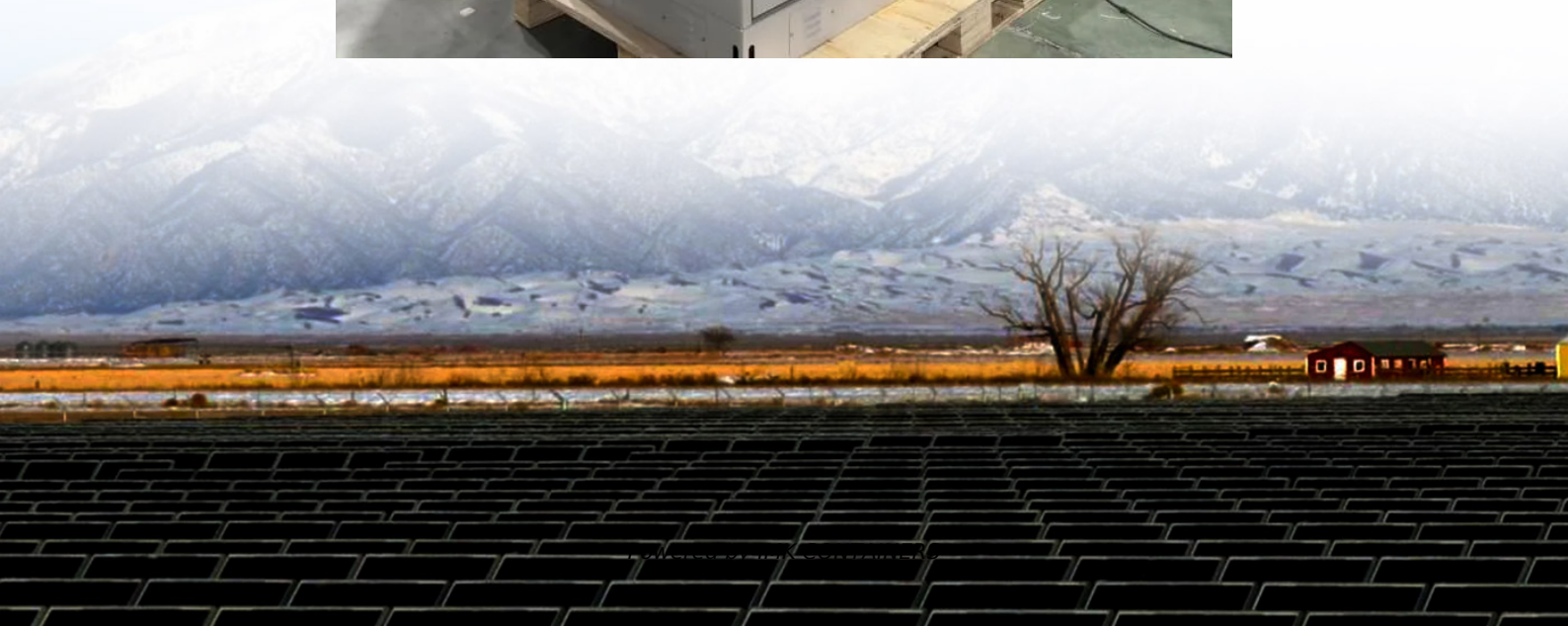


# The role of high voltage ipm inverter





## Overview

---

What is an IPM & how does it work?

The IPM ensures that electricity from the Power Puck is the primary power source for the transmitter. It supplements the Power Puck with additional power from the IPM's batteries only when required.

What is the difference between a power module and an IPM?

Traditional power modules require discrete gate drivers, introducing parasitic inductance and mismatched timing. IPMs use multilayer substrates (e.g., DBC ceramics) with optimized layout geometry to minimize parasitic inductance in power loops.

What is an intelligent power module (IPM)?

Intelligent Power Modules (IPMs) are extensively used in variable-frequency drives (VFDs) and servo motor controllers due to their high efficiency and integrated protection features. In industrial automation, IPMs enable precise control of three-phase induction motors, brushless DC (BLDC) motors, and permanent magnet synchronous motors (PMSMs).

What does IPM stand for?

USING INTELLIGENT POWER MODULES Sep.1998 6.0 Introduction to Intelligent Power Modules (IPM) Mitsubishi Intelligent Power Modules (IPMs) are advanced hybrid power devices that combine high speed, low loss IGBTs with optimized gate drive and protection circuitry.



## The role of high voltage ipm inverter

---



### [High-Voltage Inverter Retrofits in Power Plants](#)

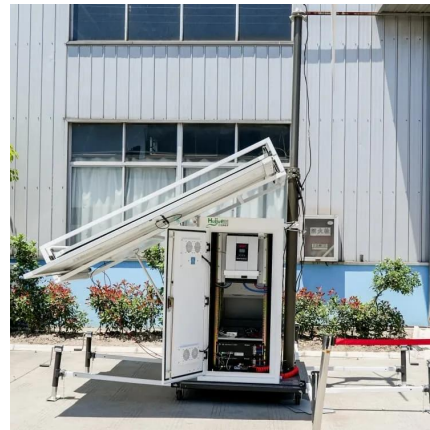
Explore the structure, operation, and real-world retrofit of high-voltage inverters in power plants. Improve energy efficiency, reduce costs, and boost reliability.

[Learn More](#)

### [High-Voltage Inverter Retrofits in Power ...](#)

Explore the structure, operation, and real-world retrofit of high-voltage inverters in power plants. Improve energy efficiency, reduce costs, and boost reliability.

[Learn More](#)



### [High Voltage Inverters: Understanding Its Benefits and ...](#)

High-voltage inverters play a crucial role in converting DC (direct current) into AC (alternating current) at higher voltage levels, making them ideal for various applications such as ...

[Learn More](#)



### [High Voltage Inverter: Unlocking the ...](#)

This article will discuss the definition, working principles, characteristics, and benefits of using high voltage inverter in renewable energy systems.

[Learn More](#)



[Intelligent Power Modules \(IPM\) , Tutorials on Electronics](#)

Definition and Core Components of IPMs An Intelligent Power Module (IPM) is a high-performance, integrated power electronics module that combines power switching ...

[Learn More](#)



### [USING INTELLIGENT POWER MODULES](#)

The third generation IPM has been optimized for minimum switching losses in order to meet industry demands for acoustically noiseless inverters with carrier frequencies up to ...

[Learn More](#)



### **Which Industries Are Harnessing the Power of High Voltage Inverters**

With continuous advancements in design and technology, high voltage power inverters are poised to play an increasingly pivotal role in shaping the future of energy and ...

[Learn More](#)



[IPM in Electronics: Small Component, Big Impact](#)



IPM in electronics plays a crucial but often overlooked role. These compact IPM modules manage power efficiently in everyday devices.

[Learn More](#)



### The Role of High Input Voltage Inverters in Modern Energy ...

One of the key advantages of high input voltage inverters is their ability to maximize energy efficiency. By efficiently converting high voltage DC power into low voltage ...

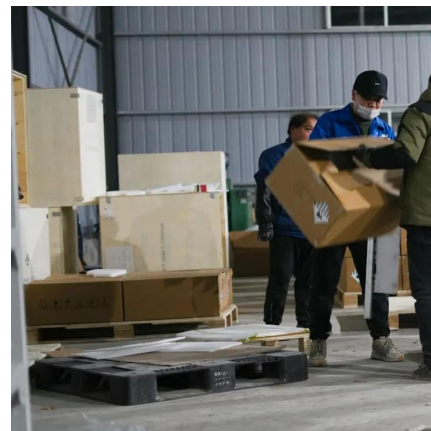
[Learn More](#)



### High Voltage Inverter: Unlocking the Potential of High ...

This article will discuss the definition, working principles, characteristics, and benefits of using high voltage inverter in renewable energy systems.

[Learn More](#)



### Desing and Development of a Mixed Si-GaN Open-End Winding Inverter ...

This paper presents the design and development of a hybrid multilevel inverter for electric vehicle applications employing an open-end winding motor configuration. This ...

[Learn More](#)



### The IPM Advantage: How Integrated Structure Drives ...



The optimized internal structure of an IPM solves fundamental power electronics challenges at the source--inside the module itself. By minimizing parasitic inductance, ...

[Learn More](#)



## Contact Us

---

For catalog requests, pricing, or partnerships, please visit:  
<https://fundacjawandea-imk.pl>

## Scan QR Code for More Information



<https://fundacjawandea-imk.pl>