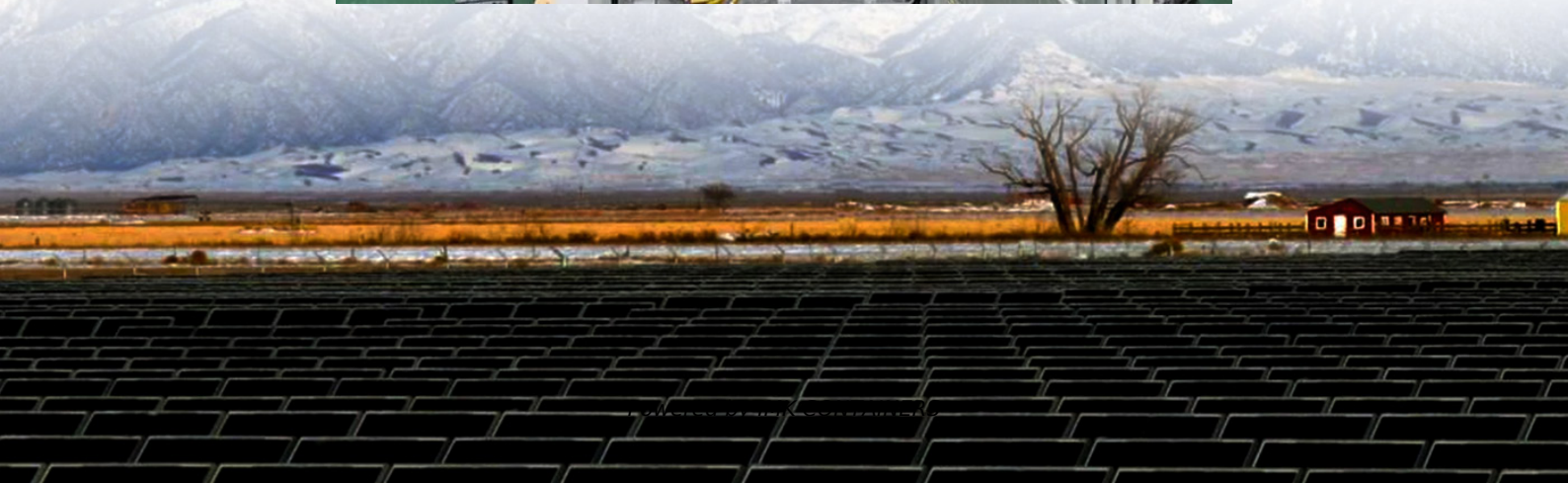


The composition of base station communication equipment includes





Overview

What are the components of a base station?

The base station will have one or more RF antennas installed to transmit and receive RF signals from other devices. The block diagram of a base station typically includes the following key components: Baseband Processor: The baseband processor too deals with different communication protocols and interfaces with mobile network infrastructure.

What are base stations & how do they work?

Base stations are the critical components that enable mobile phones and other devices to connect to cellular networks. Here's how they work in a typical mobile network: Signal Transmission and Reception: Mobile devices communicate with the nearest base station via radio waves.

What is a base transceiver station?

A Base Transceiver Station comprises various components that work cohesively to establish and maintain communication with mobile devices. These components handle everything from signal processing and transmission to power management and network interfacing, ensuring seamless connectivity and optimal network performance.

What is a communication base station?

In the vast telecommunications network, communication base stations play a frontline role. Positioned closest to end users, they serve as gateways for processing customer requests and managing data flow. In the words of "Interesting Communication Engineering Drawings," these stations act like "business trackers," always vigilant to:



The composition of base station communication equipment includes



Base Stations

The present-day tele-space is incomplete without the base stations as these constitute an important part of the modern-day scheme of wireless communications. They are ...

[Learn More](#)

[3.base Station Composition And Composition , Yunpan](#)

The communication base station is the most critical infrastructure in the mobile communication network. The mobile communication base station has structural parts such as ...

[Learn More](#)



Understanding Base Stations: The Backbone of Wireless Communication

In today's digital age, reliable and high-speed communication is more essential than ever. Whether it's for mobile phones, internet services, or IoT (Internet of Things) devices, ...

[Learn More](#)

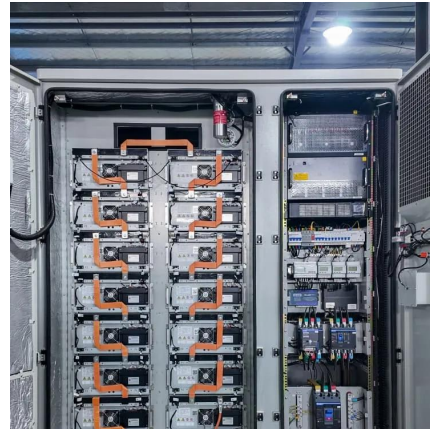


Base Stations

The present-day tele-space is incomplete without the base stations as these constitute an important part of the modern-day scheme of wireless communications. They are referred to as cell towers or cellular ...



[Learn More](#)



[1. What Is a Base Station and What Are Its Core Components?](#)

A mobile communication base station is the radio facility that covers a specific area and enables data transmission between mobile phones and the core network. It is the ...

[Learn More](#)



[4.Basic Configuration of Base Stations , About ...](#)

The basic base station equipment for digital mobile communications systems consists of amplifiers (AMP) to amplify the transmission and reception signals to desired levels, modems (MDE) to convert base band signals to high ...

[Learn More](#)



[4.Basic Configuration of Base Stations , About DOCOMO](#)

The basic base station equipment for digital mobile communications systems consists of amplifiers (AMP) to amplify the transmission and reception signals to desired levels, modems ...

[Learn More](#)



[What is a Base Station? -- From Communication Core to ...](#)



Base stations are the core of mobile communication, and with the rise of 5G, thermal and energy challenges are increasing. This article explains the definition, structure, ...

[Learn More](#)



[base transceiver station components](#)

A Base Transceiver Station comprises various components that work cohesively to establish and maintain communication with mobile devices. These components handle ...

[Learn More](#)



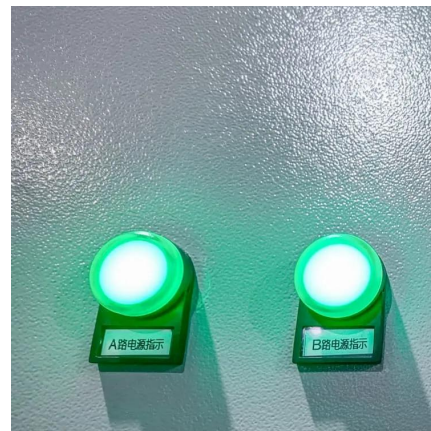
[Basic components of a 5G base station](#)



[Basic components of a 5G base station](#)

The 5G base station is composed of a power supply system and communication equipment [4], in addition to some auxiliary equipment such as air conditioning and lighting.

[Learn More](#)



Complete Guide to 5G Base Station Construction , Key Steps, Equipment

Explore how 5G base stations are built--from site planning and cabinet installation to power systems and cooling solutions. Learn the essential components, technologies, and ...

[Learn More](#)



The 5G base station is composed of a power supply system and communication equipment [4], in addition to some auxiliary equipment such as air conditioning and lighting.

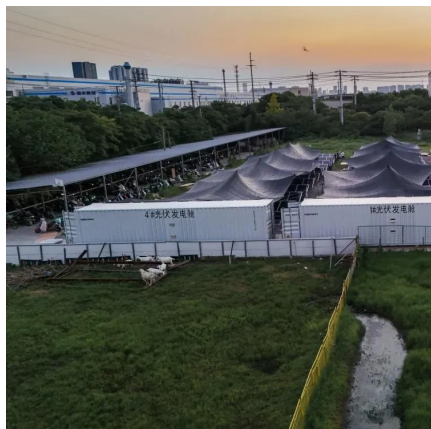
[Learn More](#)



[base transceiver station components](#)

A Base Transceiver Station comprises various components that work cohesively to establish and maintain communication with mobile devices. These components handle everything from signal processing ...

[Learn More](#)



[Complete Guide to 5G Base Station...](#)

Explore how 5G base stations are built--from site planning and cabinet installation to power systems and cooling solutions. Learn the essential components, technologies, and challenges behind 5G ...

[Learn More](#)



[Equipment Needed to Build a 5G Base Station](#)

Overview of 5G base station equipment, components, and layered architecture covering antenna systems, RRU/BBU functions, transmission, power, and monitoring.

[Learn More](#)





Contact Us

For catalog requests, pricing, or partnerships, please visit:
<https://fundacjawandea-imk.pl>

Scan QR Code for More Information



<https://fundacjawandea-imk.pl>