

# Strong R





## Overview

---

What is a strong R?

The full STRONG-R includes static and dynamic items and measures both risk and protective factors to inform needs for all criminal justice populations, provide classification information for prison and jail populations, and predict compliance for individuals on community supervision (i.e., probation and parole).

What does strong-R stand for?

The Static Risk Offender Needs Guide – Revised (STRONG-R) assessment system has characteristics that other assessments don't possess, including multivariate item selection, analytic weighting, gender-specific models, general and specific recidivism models, and an available sex offender module.

What is the purpose of the strong-R?

PDF | The STRONG-R was developed to assess offenders' needs and predict recidivism. The purpose of this chapter was to describe the validity and. | Find, read and cite all the research you need on ResearchGate.

Is strong-R a good predictive tool?

Comparing the predictive validity to that of other contemporary tools, the STRONG-R has outperformed across a variety of metrics of discrimination, accuracy, calibration, and combined measures (Drake, 2014; Hamilton et al, 2016), relying not only on AUCs. Contact us for more information about STRONG-R validity. Download the Strong-r Datasheet



## Strong R

---



### **Predicting the Future to Improve Today: An Assessment Tool ...**

The proxy method used in the Tennessee STRONG-R 2.0 is a foundational advancement in the capacity to quickly develop a highly predictive, customizable and localized assessment.

[Learn More](#)

### [A methodological template for the next generation: ...](#)

The STRONG-R, a fourth-generation RNA, integrates criminal history and semi-structured interview data into a multi-band, gender-responsive tool (Hamilton et al., 2016). ...

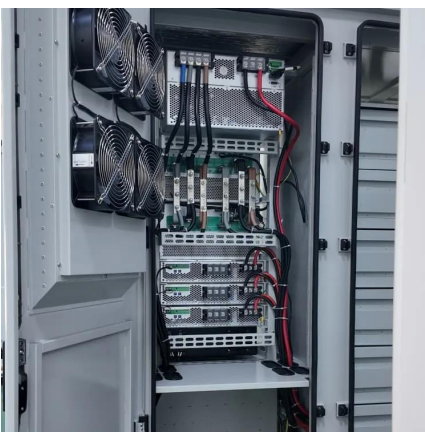
[Learn More](#)



### [Why you can't pronounce the R in English and how to ...](#)

A strong R appears at the beginning of a word or before a vowel, like 'red' or 'around'. And the soft R appears after a vowel, where the vowel is more important than the R: ...

[Learn More](#)



### [Static Risk Offender Need Guide for Recidivism](#)

The Static Risk Offender Need Guide for Recidivism (STRONG-R; Hamilton et al., 2016) is an assessment of the risk for recidivism. The STRONG-R instrument was created after an ...



[Learn More](#)



### [Never going to let you down: Preventing predictive ...](#)

Although researchers and providers are aware these tools experience performance shrinkage, the issue is commonly ignored. In 2016 the Tennessee Department of Correction (TDOC) ...

[Learn More](#)



### [R/Strong Training , R/Strong Performance](#)

R/STRONG TRAINING PROGRAMS PROVEN PROGRAMMING We take all the confusion and second-guessing out of getting better. Membership includes access to R/Strong training ...

[Learn More](#)



### **Strongr**

Offering practical support on translating ideas to daily life and seeing them come into place as efficiently as possible. The support includes communication with project teams, stakeholders, ...

[Learn More](#)





## [The Static Risk and Offender Needs Guide](#)

Explore the design and implementation of risk assessment tools used in the U.S. criminal justice system with this comprehensive database.

[Learn More](#)



## **STRONG**

The Public Safety Risk Assessment Clearinghouse is a one-stop resource that provides practitioners and policymakers with up-to-date and objective information about risk ...

[Learn More](#)

## [THE STATIC RISK OFFENDER NEEDS GUIDE - REVISED ...](#)

Douglas Routh, M.A. Abstract: The STRONG-R was developed to assess offenders' needs and predict recidivism. The purpose of this chapter was to describe the validity and ...

[Learn More](#)



## **Designed to Fit**

Designed to Fit: The Development and Validation of the STRONG-R Recidivism Risk Assessment  
Zachary Hamilton zachary.hamilton@wsu , Alex Kigerl, [...], and Lauren ...

[Learn More](#)



## [The Static Risk Offender Needs Guide - Revised \(STRONG-R\)](#)

The STRONG-R was developed to assess offenders' needs and predict recidivism. The purpose of this chapter was to describe the validity and reliability of the Static Risk ...

[Learn More](#)



## **Microsoft Word**

The STRONG - Static Risk and Offender Needs Guide Assessments , in collaboration with the Washington Department of Corrections, developed and implemented a ...

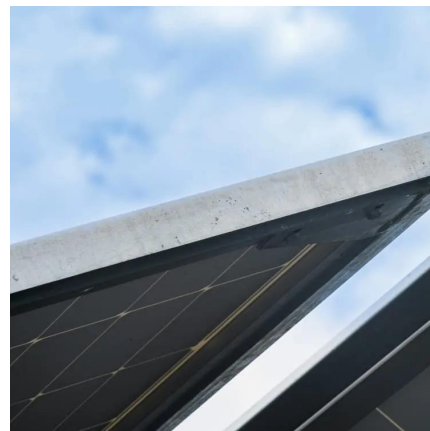
[Learn More](#)

## [The Static Risk Offender Needs Guide -](#)

...

The STRONG-R was developed to assess offenders' needs and predict recidivism. The purpose of this chapter was to describe the validity and reliability of the Static Risk Offender Needs Guide

[Learn More](#)



## [12.5: Interpretation of r-Values](#)

The symbol for the results of a correlation test is  $r$ . The result is known as an  $r$  - value, a correlation coefficient, or simply as the obtained value for the test. This is easy to ...

[Learn More](#)



## Contact Us

---

For catalog requests, pricing, or partnerships, please visit:  
<https://fundacjawandea-imk.pl>

### Scan QR Code for More Information



<https://fundacjawandea-imk.pl>