

Stockholm container wind power base station address





Overview

Where is the closest container terminal in Sweden?

50 percent of the Swedish consumption takes place in the Stockholm region, and Stockholm Norvik Port is the closest container terminal. The container terminal at Stockholm Norvik Port is operated by Hutchison Ports, the world leading port network. Read more about Stockholm Norvik Port.

Who operates the container terminal at Stockholm Norvik port?

The container terminal at Stockholm Norvik Port is operated by Hutchison Ports, the world leading port network. Read more about Stockholm Norvik Port. Stockholm's container terminal is located at Stockholm Norvik Port, 50 kilometres south of Stockholm.

What is the port of Stockholm used for?

The Port of Stockholm is one of the major ports in Scandinavia. It is a major gateway into Sweden and is used by holidaymakers and businessmen alike. The port is central for freight and passenger sailing from Sweden to Finland, Russia and the Baltic States.

Where is Stockholm's container terminal located?

Stockholm's container terminal is located at Stockholm Norvik Port, 50 kilometres south of Stockholm. Closeness to the fairway and efficient transport connections provide direct access to one of Europe's fastest growing regions.



Stockholm container wind power base station address



[Container terminal Stockholm Norvik](#)

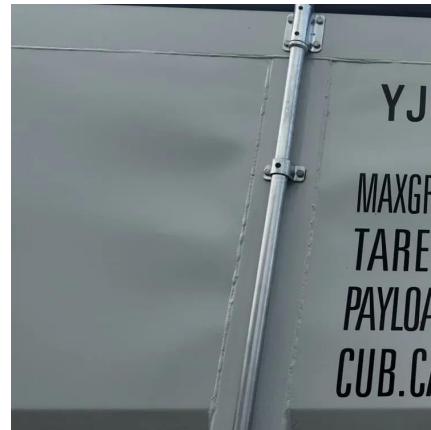
The container terminal at Stockholm Norvik Port is operated by Hutchison Ports, the world leading port network with 54 ports in 25 countries. Through the collaboration with Hutchison Ports, ...

[Learn More](#)

STOCKHOLM Port

Marine Port Description and Specification:
Stockholm, Sweden General Overview:
Stockholm, the capital city of Sweden, hosts one of the most significant ports in the Baltic Sea region. The port ...

[Learn More](#)



Container

Stockholm's container terminal is located at Stockholm Norvik Port, 50 kilometres south of Stockholm. Closeness to the fairway and efficient transport connections provide direct access to one of Europe's fastest ...

[Learn More](#)

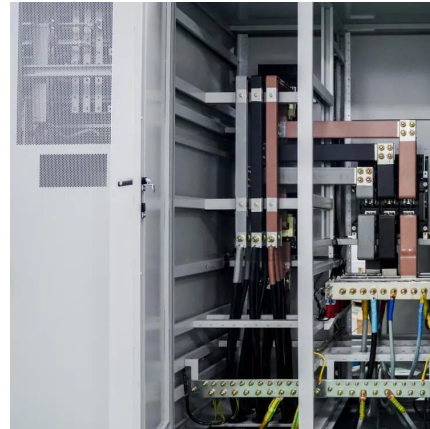


Our Terminal

Remote-controlled quay cranes Our quay cranes are remotely operated from an operating station located in the terminal operations center. With the aid of HD cameras, automation ...



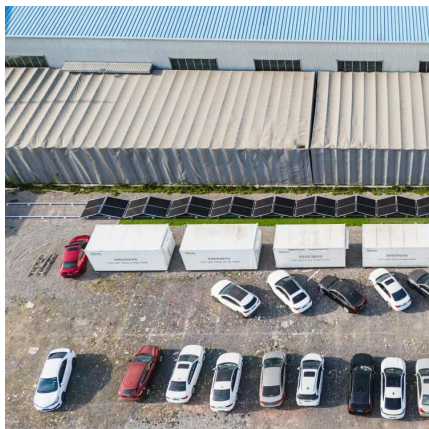
[Learn More](#)



Port of Stockholm Information: Stockholm Port / Harbour, Sweden

Port of Stockholm Harbour Information, Terminals and Facilities (Stockholm, Stockholms Lan, Sweden) The Port of Stockholm is one of the major ports in Scandinavia. It is ...

[Learn More](#)



Stockholm Nord

Stockholm Nord Intermodal Terminal is located in the north of Stockholm, inside the newly developed logistics park. The terminal can handle all types of cargo moved by rail; such as ...

[Learn More](#)



Container

Stockholm's container terminal is located at Stockholm Norvik Port, 50 kilometres south of Stockholm. Closeness to the fairway and efficient transport connections provide direct ...

[Learn More](#)





Contact Us

For catalog requests, pricing, or partnerships, please visit:
<https://fundacjawandea-imk.pl>

Scan QR Code for More Information



<https://fundacjawandea-imk.pl>