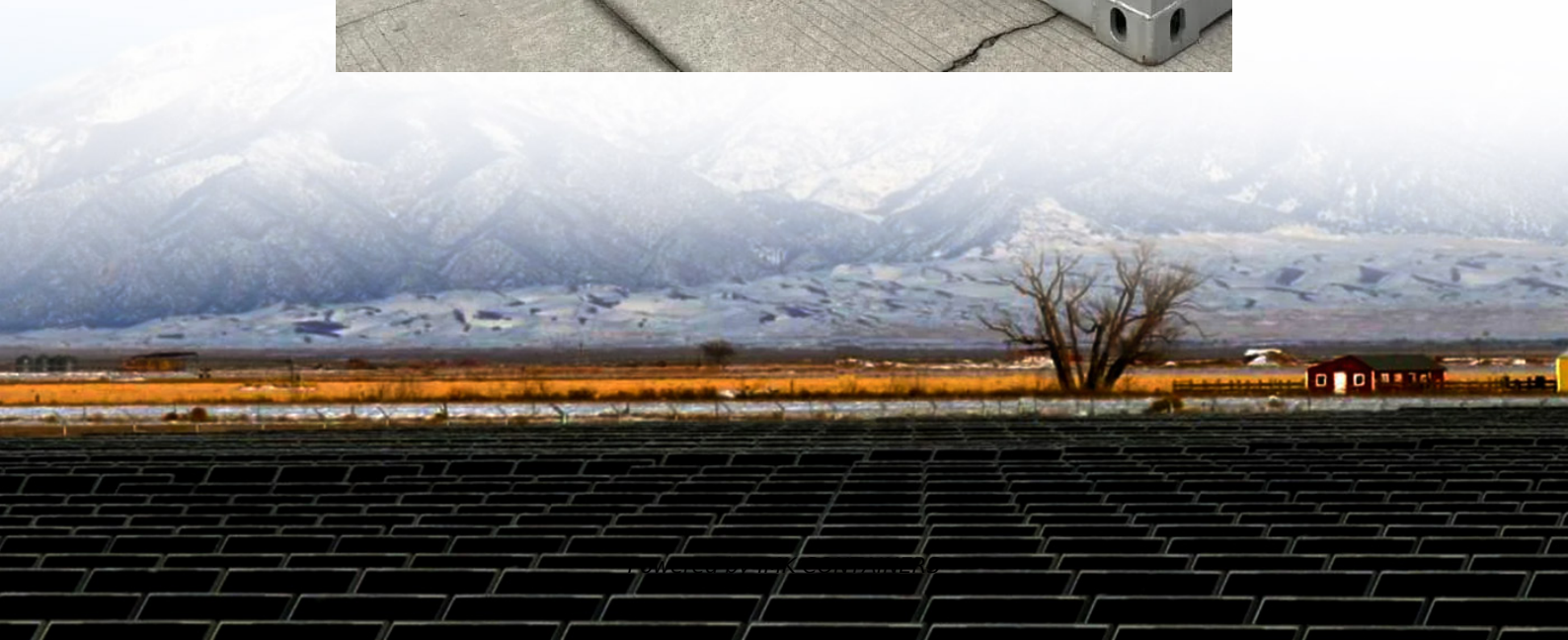
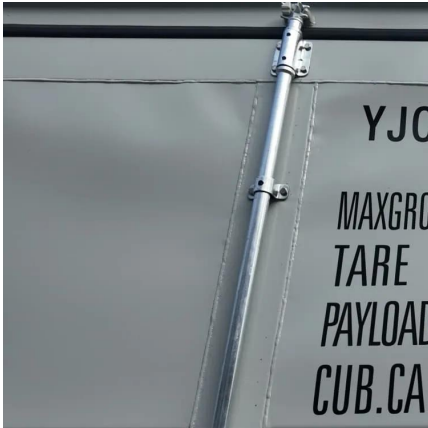


Station-type and container energy storage





Station-type and container energy storage



[railway station or train station? . WordReference Forums](#)

A train station (commonly station, railway station (mainly British Commonwealth) or railroad station (mainly US)) is a railway facility where trains regularly stop to load or unload ...

[Learn More](#)

[to get off at the next station](#)

When you did get off, that was the right station under the new circumstances created by missing your intended stop. As soon as you say you missed your stop, every ...

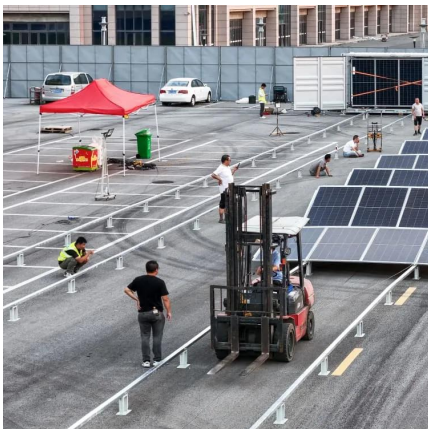
[Learn More](#)



"Could you tell me where the train station is?" Is it correct?

In BE you don't need to say train/rail/railway. You can just say station, because railway station is what it means by default. If you mean a different kind of station, you would ...

[Learn More](#)



[bus station/bus stop . WordReference Forums](#)

A bus "station" is not a bus "terminal"; though a "terminal" is a "station-on-steroids". This is why certain facilities are called bus, train, and or passenger terminals; while other ...



[Learn More](#)



[next station vs next stop](#)

Hello everyone, While riding the metro in Hamburg, Germany, I recognized that the announcement went "next station, [name of metro station]." I've already heard announcements ...

[Learn More](#)



[to a station or to the station](#)

We would really need more context. It depends on whether we are talking about a particular station or any station. I don't think there can be a rule about only using 'the' in these ...

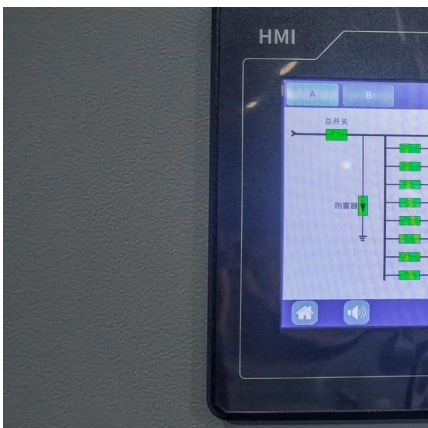
[Learn More](#)



in/at the station

Hi, I was wondering which preposition is better in the following sentence because I have seen both options: "The train arrives in Waterloo station at 6:30" or "The train arrives at ...

[Learn More](#)





above one's station.

His ideas were above his station. What does this phrase mean? As I know station also means social position. But I don't quite get the meaning of the sentence.

[Learn More](#)



[at the/in the police station/fire station](#)

Well, just to start things off, generally in American English we say the police station, the fire station, the hospital, etc. This is even if we don't have a clue which one is intended.

[Learn More](#)

[When should I capitalize "station" in a station name?](#)

The line has four stations, which include Union Station, Bloor GO / Dundas West subway station, Weston GO station and Toronto Pearson International Airport station at ...

[Learn More](#)



Contact Us

For catalog requests, pricing, or partnerships, please visit:
<https://fundacjawandea-imk.pl>



Scan QR Code for More Information



<https://fundacjawandea-imk.pl>