

Standard value of base station power supply voltage





Overview

What is a base value in power system calculations?

Base value is used in power system calculations. Electrical quantities are expressed as a percentage of the base value of that electrical quantity. For example if the base MVA of an electrical system considered is 100MVA, then a 50MVA generator MV. Something went wrong. Wait a moment and try again.

What is a good service voltage?

However, equipment such as large motors may require a service voltage of 4160 V or higher, and, further, service reliability tends to increase at higher service voltages. Another factor to consider regarding service voltage, is the voltage regulation of the utility system.

Why is system voltage selection important in electrical system design?

Abstract: In addition to factors such as load planning, system voltage selection is a fundamental aspect of electrical system design. The utilization voltage of equipment can be accomplished with various distribution system voltages. Typical considerations include utility connections, rate tariffs, distances to loads, costs and others.

What is IEEE substations standards collection?

IEEE Substations Standards Collection contains 50 active IEEE Standards, Guides, and Recommended Practices, Errata & Interpretations for Power Substations, it also allows for easy full text searching on a signal standard or all standards at the same time.



Standard value of base station power supply voltage



[IEEE Power Substations Standards Collection: VuSpec™](#)

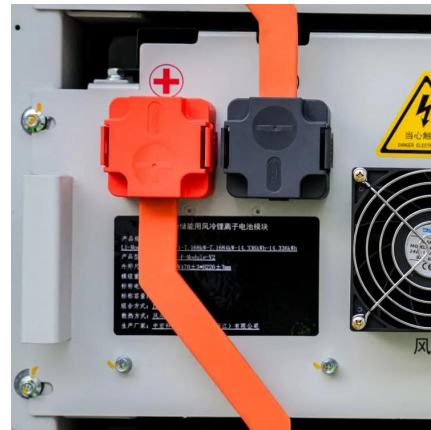
IEEE Power Substations Standards Collection included active standards covering switching stations, transformer stations, and generating station switchyards. IEEE Substations ...

[Learn More](#)

[Base station power supply voltage standard](#)

However, the -48 V DC must first be efficiently converted to a positive intermediate bus voltage before it can be boosted to power the PA or stepped down to a ...

[Learn More](#)



[Base voltage in power system](#)

Here's how the Per Unit system works and how calculations are performed: Base Values: In the PU system, you choose a set of base values for voltage (V_{base}) and apparent power ...

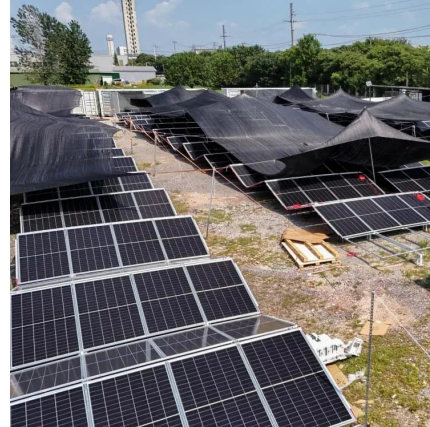
[Learn More](#)



The Standard

Breaking news, news online, Zimbabwe news, world news, news video, weather, business, money, politics, law, technology, entertainment, education, health

[Learn More](#)



[Selecting the Right Supplies for Powering 5G Base Stations](#)

These tools simplify the task of selecting the right power management solutions for these devices and, thereby, provide an optimal power solution for 5G base stations components.

[Learn More](#)



What is the mainstream voltage of the base station power supply

What is base station Power? Base station power refers to the output power level of base stations, which is defined by specific maximum limits (24 dBm for Local Area base stations and 20 dBm ...

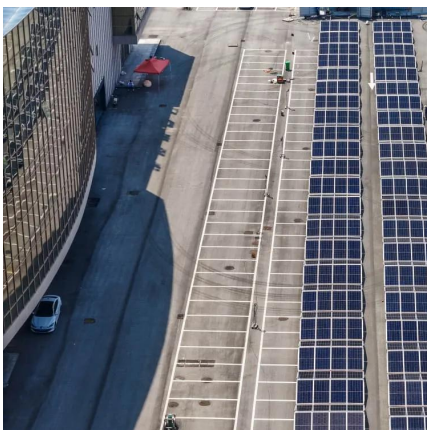
[Learn More](#)



[What is the base station power supply standard](#)

BAICELLS MBS31001C Base Station Power Supply Gps Antenna The power supply unit features an input voltage range of 100-240V AC, making it suitable for use in ...

[Learn More](#)





The Standard

Chairperson of the China Hunan Association, Zhuolin Song, said the initiative went beyond short-term assistance, focusing instead on sustainable empowerment.

[Learn More](#)



[National standard requirements for communication base ...](#)

Apr 1, 2023 · The power factor corrected (PFC) AC/DC produces the supply voltage for the 3G Base station's RF Power amplifier (typ. +27V) and the bus voltage for point-of-load ...

[Learn More](#)



[Standard value of base station power supply voltage](#)

About Standard value of base station power supply voltage video introduction Our solar container solutions encompass a wide range of applications from residential solar power to large-scale ...

[Learn More](#)



Local News

The war in Ukraine had magnified the slowdown in the global economy, which was now entering what could become "a protracted period of feeble growth and elevated inflation," the World ...

[Learn More](#)



[Beyond the harvest: How Zimbabwean potato farmers can ...](#)

The Irish potato is a vital cash crop, central to both food security and farmer livelihoods. While producing a good crop requires skill and dedication, true profits are ...

[Learn More](#)



[Base station power supply charging standards](#)

IEC 61851-21-2:2018 defines EMC requirements for all off-board components or equipment of such systems used to supply or charge electric vehicles by means of conductive ...

[Learn More](#)



News

After the incident, the complainant engaged the services of Advisory Auditors to conduct a full audit at their company, Agricon Equipment Private Limited.

[Learn More](#)



[System Voltage Considerations](#)

The nominal voltages from American National Standard Preferred Voltage Ratings for Electric Power Systems and Equipment (60Hz) ANSI C84.1-1989. * are given in Standard Nominal ...

[Learn More](#)





Contact Us

For catalog requests, pricing, or partnerships, please visit:
<https://fundacjawandea-imk.pl>

Scan QR Code for More Information



<https://fundacjawandea-imk.pl>