

Solar panels 300 square meters





Overview

How to calculate solar power per square meter?

You can calculate the solar power per square meter with the following calculators. 1. For Off-Grid It is the system that generates its own power with panels and a battery bank. In the off-grid calculator select from the option, shed cabin, house, or portable. Next, select the days of full autonomy, etc. 2. Solar Savings Calculator.

How much solar energy is received per square meter?

The amount of solar intensity received by the solar panels is measured in terms of square per meter. The sunlight received per square meter is termed solar irradiance. As per the recent measurements done by NASA, the average intensity of solar energy that reaches the top atmosphere is about 1,360 watts per square meter.

What is solar panel watts per square meter (W/M)?

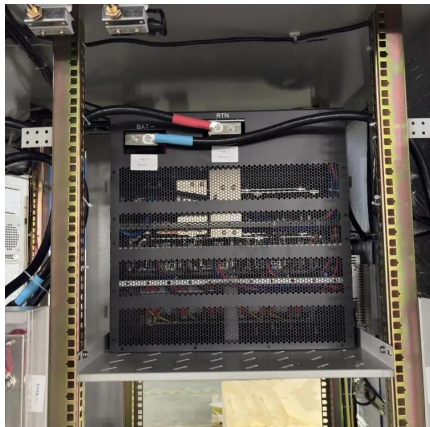
Solar panel watts per square meter (W/m) measures the power output of a solar panel based on its size. Compare solar panels to see which generates most electricity per square meter. A higher W/m value means a solar panel produces more power from a given area. This can help you determine how many solar panels you need for your energy needs.

How do you measure solar panel efficiency?

To measure this efficiency, use solar panel Watts per square meter (W/m). This metric shows how much power a solar panel produces per square meter of surface area under standard conditions. By knowing W/m, you can: Install solar panels and maximize your energy output! What is Solar Panel Efficiency?



Solar panels 300 square meters



[Solar Power Density Calculator](#)

The Solar Power Density Calculator is an essential tool for those looking to optimize their solar power systems. It calculates the amount of power generated per unit area ...

[Learn More](#)

[Total Area Required for Solar Panel ...](#)

Calculate the total area needed for your solar panel installation quickly and accurately with our easy-to-use solar panel area calculator.

[Learn More](#)



[Solar panels per m² costs \[2025 \] - theCostAdvisor](#)

The following table shows the prices per solar panel, per Wp and per kWh, the number of square meters that these panels occupy, and including installation, materials.

[Learn More](#)



[How many solar panels do I need on my house to become ...](#)

But if you try to power the same sized house in Vermont, where the average solar insolation per year is around 4 kWh/meters squared/day, you'll need 80 square meters (861 sq ft) of 15 ...

[Learn More](#)



[Solar-Rooftop Calculator](#)

Online Solar Roof Top Calculator Calculates the number of solar panels, kilowatt capacity, daily unit production, and require area in Square Meter as well as Square Feet based on the ...

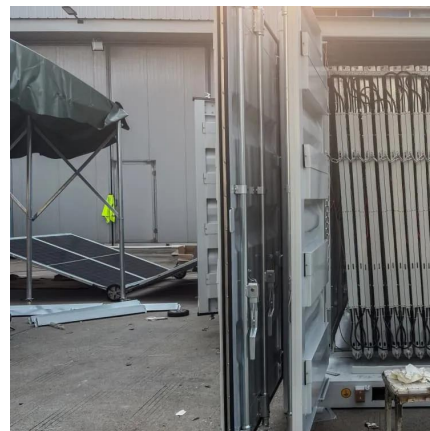
[Learn More](#)



[Solar Panel Output Per Square Meter](#)

Discover how much electricity solar panels generate per square meter, explore efficiency factors, technology comparisons, and future innovations in photovoltaic energy.

[Learn More](#)



[How many watts of solar energy are needed ...](#)

The adoption of solar energy is a powerful means to achieve energy efficiency and sustainability, particularly for those needing 300 square meters of coverage.

[Learn More](#)

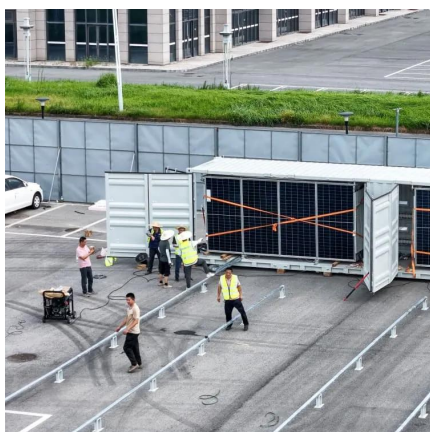


[Solar Power Per Square Meter Calculator](#)



Your roof's orientation, local climate, shading, and even the dust on your panels can slash that output by 30-50%. This comprehensive guide reveals exactly how to calculate your solar ...

[Learn More](#)



[Solar Panel Watts Per Square Meter Explained](#)

Learn how to measure solar panel efficiency using solar panel watts per square meter with this comprehensive guide.

[Learn More](#)



[Solar Power per Square Meter Calculator](#)



[Total Area Required for Solar Panel Installation Calculator](#)

Calculate the total area needed for your solar panel installation quickly and accurately with our easy-to-use solar panel area calculator.

[Learn More](#)



How many watts of solar energy are needed for 300 square meters?

The adoption of solar energy is a powerful means to achieve energy efficiency and sustainability, particularly for those needing 300 square meters of coverage.

[Learn More](#)



Solar Power per Square Meter Calculator: It's used to calculate the amount of solar intensity received by the solar panels.

[Learn More](#)



[Solar Power per Square Meter Calculator](#)

Solar Panel Output CalculatorSolar Panels Kwh CalculatorSolar Panel Area Per KwWattage is the output of solar panelsthat is calculated by multiplying the volts by amps. Here, the amount of the force of the electricity is represented by volts. The aggregate amount of energy used is expressed in amps (amperes). Output ratings on most solar panels range between 250 watts to 400 watts.See more on energytheory solvebility

Solar Power Per Square Meter Calculator - Free Tool 2025

Your roof's orientation, local climate, shading, and even the dust on your panels can slash that output by 30-50%. This comprehensive guide reveals exactly how to calculate your solar ...

[Learn More](#)

Contact Us

For catalog requests, pricing, or partnerships, please visit:
<https://fundacjawandea-imk.pl>

Scan QR Code for More Information



<https://fundacjawandea-imk.pl>