

Solar module rear glass size





Overview

How much does a solar module weigh?

Typical dimensions of a domestic PV module are 1.4–1.7 m², with >90% covered by soda-lime-silica (SLS) float glass. 9 The glass alone weighs ~20–25 kg since the density of SLS glass is ~2520 kg/m³. This presents engineering challenges as current solar panels are rigid and need strong, heavy support structures.

How thick is a solar module?

Glass thickness per pane: 2 - 12 mm Hail protection: Protection class 5 (hailstone size 50 mm) Fire safety classification: B - s1, d0 according to European fire protection standard EN 13501-1. * The square-metre performance of the solar module depends on the specific format.

How to install glass-glass solar modules?

Glass-glass solar modules can be installed both with or without frames. The mounting systems FAST, MATCH, LEVEL, NICER, LOCKUP, LOCKIN, LAYUP and LAYIN are especially suitable for the integration of glass-glass solar modules. Particularly anti-glare surface structures are used. Megasol Cell technologies: Mono HiR / Mono HiR RearCon.

What is a glass-glass module?

Glass-Glass module designs are an old technology that utilises a glass layer on the back of modules in place of traditional polymer backsheets. They were heavy and expensive allowing for the lighter polymer backsheets to gain the majority of the market share at the time.



Solar module rear glass size



[Improvement Options for PV Modules by Glass Structuring](#)

Keywords: module glass structuring, glass imprinting, glass etching, module performance improvement. 1 INTRODUCTION Photovoltaic module glass surface structuring ...

[Learn More](#)

[A Complete Guide to Solar Module Glass](#)

As solar technology continues to advance, solar module glass has become one of the most critical components determining the performance, durability, and long-term reliability ...

[Learn More](#)



[Glass-Glass Solar Panel DUETTO , FuturaSun](#)

The FuturaSun product range also includes monocrystalline bifacial glass-glass photovoltaic modules: Silk® Duetto and Silk® Nova Duetto. The front and rear sides are made of hardened, transparent 2 mm safety glass, and ...

[Learn More](#)



Solar Glass

The Most Comprehensive Selected Top Class Chinese Glass Machines, Products and Services Resource Glass Fabricating Machines , Glass Processing Machines , Glass ...



[Learn More](#)



[Wind speed and rear glass breakage on ...](#)

Reports of glass breakage in bifacial PV modules installed in single-axis tracker-based solar farms have increased in recent years. While initial attention on tracker module failures was on 2P trackers due to torsional ...

[Learn More](#)



[Glass Takes Lead Role In Rear Covers For Advanced Solar ...](#)

Backsheets have ceded their exclusive position as the preferred rear cover material. Historically, the market size for backsheets reflected the module production, as these ...

[Learn More](#)



Presentation

8 Glass-Glass Module Performance Issues Use of clear back glass typically results in a "1 power class" penalty (2-5% lower power rating). Recent improvements in quality of ...

[Learn More](#)





Glass-Glass Solar Panel DUETTO₂ FuturaSun

The FuturaSun product range also includes monocrystalline bifacial glass-glass photovoltaic modules: Silk® Duetto and Silk® Nova Duetto. The front and rear sides are made of hardened, ...

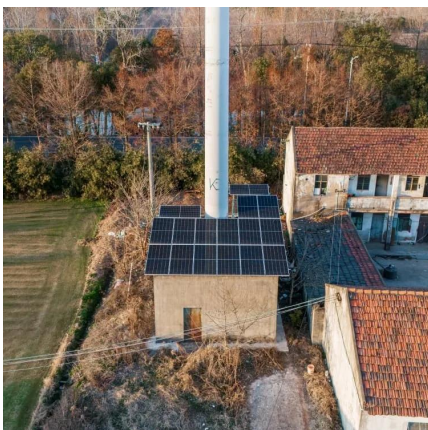
[Learn More](#)



Towards improved cover glasses for photovoltaic devices

Photovoltaic (PV) module assembly is material-demanding, and the cover glass constitutes a significant proportion of the cost. Currently, 3-mm-thick glass is the predominant cover ...

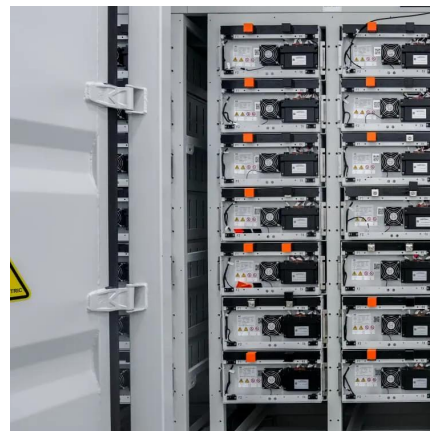
[Learn More](#)



Wind speed and rear glass breakage on bifacial PV modules ...

Reports of glass breakage in bifacial PV modules installed in single-axis tracker-based solar farms have increased in recent years. While initial attention on tracker module failures was on 2P ...

[Learn More](#)



Glass-Glass PV Modules

Glass-Glass module designs are an old technology that utilises a glass layer on the back of modules in place of traditional polymer backsheets. They were heavy and expensive allowing for the lighte...

[Learn More](#)



Glass-Glass PV Modules

Glass-Glass module designs are an old technology that utilises a glass layer on the back of modules in place of traditional polymer backsheets. They were heavy and expensive ...

[Learn More](#)



Towards improved cover glasses for ...

Photovoltaic (PV) module assembly is material-demanding, and the cover glass constitutes a significant proportion of the cost. Currently, 3-mm-thick glass is the predominant cover material for PV modules, accounting for ...

[Learn More](#)



Contact Us

For catalog requests, pricing, or partnerships, please visit:
<https://fundacjawandea-imk.pl>

Scan QR Code for More Information



<https://fundacjawandea-imk.pl>