

Solar inverter working power consumption





Solar inverter working power consumption



[Does a solar inverter use a lot of electricity](#)

Electricity consumption is a common concern for those considering solar energy systems, and you may be wondering if a solar inverter uses a lot of electricity. In this blog post, ...

[Learn More](#)

[Solar Inverter Efficiency: What You Need to Know](#)

Discover how to maximize your solar inverter efficiency with expert tips on installation, maintenance, sizing, and cutting-edge MPPT technology for optimal energy use.

[Learn More](#)



[How To Calculate Solar Panel Battery And ...](#)

Conclusion Designing a solar system for your home might seem complex, but once you break it down into steps--calculating energy consumption, selecting solar panels, and sizing the solar battery and ...

[Learn More](#)

[How many watts of solar inverter , NenPower](#)

3. Typically, the requirement ranges from 3000 to 8000 watts for a solar inverter. 4. A higher wattage allows for increased efficiency and adaptability to future energy demands. In residential applications, ...



[Learn More](#)



[How To Calculate Solar Panel Battery And Inverter](#)

Conclusion Designing a solar system for your home might seem complex, but once you break it down into steps--calculating energy consumption, selecting solar panels, and ...

[Learn More](#)



Energy Insights: How Does a Solar Inverter Work , HUAWEI Smart PV ...

Wondering how does a solar inverter work? It does play a fundamental role in harnessing solar energy. Solar inverters transform the direct current (DC) generated by PV ...

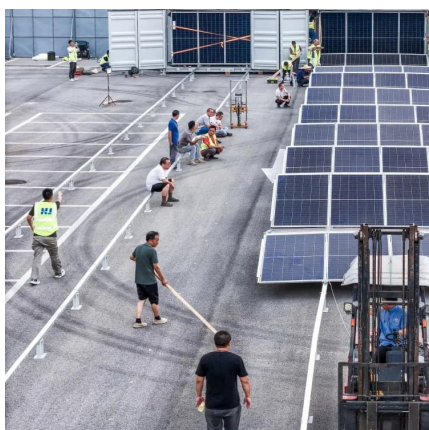
[Learn More](#)



House Power Consumption Calculator Explained: What You Need for Solar

House Power Consumption Calculator Add appliances to estimate daily energy use (kWh/day). Use "Simultaneous factor" to estimate peak load and get inverter & battery ...

[Learn More](#)



[What Is The Energy Consumption Of A Solar Inverter?](#)



A solar inverter is a converter that converts or inverts the direct current (DC) energy produced by a solar panel, making it possible to power your home with solar energy.

[Learn More](#)



[Does a solar inverter use a lot of electricity](#)

In terms of power consumption, the solar inverter itself uses a small amount of electricity. Typically, it uses less than 1% of the total energy produced by the solar panels.

[Learn More](#)



[Does a solar inverter use a lot of electricity](#)

In terms of power consumption, the solar inverter itself uses a small amount of electricity. Typically, it uses less than 1% of the total energy produced by the solar panels.

[Learn More](#)



[How Much Power Does Solar Inverter Use and How to ...](#)

Learn how much power a solar inverter uses and get practical tips on designing the ideal solar power project. From understanding inverter efficiency to system sizing, this ...

[Learn More](#)



[How many watts of solar inverter , NenPower](#)



3. Typically, the requirement ranges from 3000 to 8000 watts for a solar inverter. 4. A higher wattage allows for increased efficiency and adaptability to future energy demands. In ...

[Learn More](#)



[Does a solar inverter use a lot of electricity](#)

Electricity consumption is a common concern for those considering solar energy systems, and you may be wondering if a solar inverter uses a lot of electricity. In this blog post, we will explain the ...

[Learn More](#)



[How much energy does an inverter consume?](#)

Conclusion An inverter itself consumes a small amount of energy, usually between 5 and 20 watts during operation. Thanks to the high efficiency of modern inverters, their own ...

[Learn More](#)



Contact Us

For catalog requests, pricing, or partnerships, please visit:
<https://fundacjawandea-imk.pl>



Scan QR Code for More Information



<https://fundacjawandea-imk.pl>