

Solar inverter in winter





Overview

Can a solar inverter work in winter?

At Solis, we understand that maintaining the performance of your photovoltaic (PV) system and battery is essential to ensuring reliable energy supply throughout the colder months. With the right precautions and adjustments, your solar inverter and battery can continue to function optimally, even in winter conditions.

Can an inverter be powered by a solar panel?

Yes, an inverter can be powered directly by a solar panel. Any excess solar power generated is sent to the grid for later use. The easiest way to do this is to connect the inverter directly to the solar panels and integrate the system to the power grid.

What are solar inverters?

Solar inverters are devices that convert DC power to AC power. They are indispensable as many electronics work on AC, and the choice between AC or DC depends on the device's requirements.

How does winter affect a solar system?

Key Insights and Tips As the winter months approach, solar system owners face unique challenges due to reduced sunlight hours and lower temperatures. At Solis, we understand that maintaining the performance of your photovoltaic (PV) system and battery is essential to ensuring reliable energy supply throughout the colder months.



Solar inverter in winter



[How to Winterize a Solar Power System: Essential Tips to ...](#)

Discover essential tips to winterize your solar power system and maintain peak efficiency during cold months. Learn how to prevent snow and ice buildup, protect batteries from freezing, ...

[Learn More](#)

[Winter Maintenance for Photovoltaic Power Stations: What ...](#)

As winter approaches, many regions across the country experience significant drops in temperature and snowfall, which pose more challenging operational conditions for ...

[Learn More](#)



[Do Solar Panels Work In Winter?](#)

Solar panels work efficiently in winter despite lower sunlight. Cold weather improves performance, while snow and hail rarely cause issues. Winter output is factored into annual estimates.

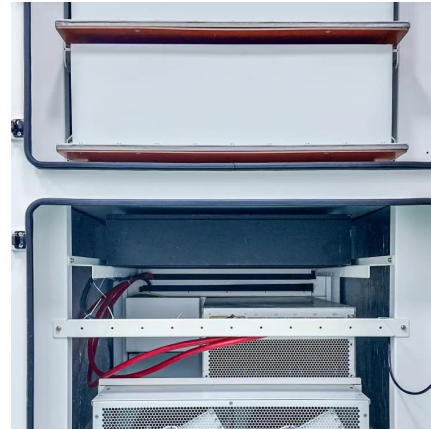
[Learn More](#)

[Do Solar Panels Work In Winter?](#)

Solar panels work efficiently in winter despite lower sunlight. Cold weather improves performance, while snow and hail rarely cause issues. Winter output is factored into ...



[Learn More](#)



Solar in the Cold: Tips for Maintaining Panels and Inverters During Winter

Winter weather brings a unique set of challenges for solar energy systems. While many assume solar panels struggle in cold conditions, the truth is that solar technology can ...

[Learn More](#)

[Solar Inverters for Cold Climate + Complete Guide](#)

The best inverter solar system, which suits your needs, shall depend on factors like compatibility with climate, efficiency, warranty, scalability, and cost. Thus, an excellent quality ...

[Learn More](#)



[Do Solar Panels Work in Winter? , Geo Green ...](#)

Do solar panels work in winter? Yes! Learn how solar works in winter, why cold weather boosts efficiency, and how to maximise your output.

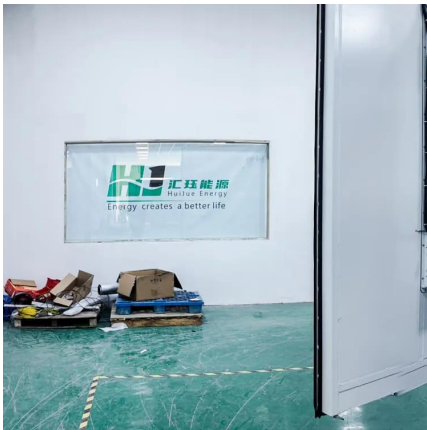
[Learn More](#)



[Battery Behavior in Winter: Solis Inverter Guide](#)

With the right precautions and adjustments, your solar inverter and battery can continue to function optimally, even in winter conditions. In this article, we will guide you through the key points to ...

[Learn More](#)



[Battery Behavior in Winter: Solis Inverter Guide](#)

With the right precautions and adjustments, your solar inverter and battery can continue to function optimally, even in winter conditions. In this article, we will guide you ...

[Learn More](#)

[Solar Panels in Winter , Growatt Performance Guide](#)

Solar panels in winter still work efficiently. Discover how Growatt inverters keep your system running even in snow and cold.

[Learn More](#)



[Do Solar Panels Work in Winter? , Geo Green Power](#)

Do solar panels work in winter? Yes! Learn how solar works in winter, why cold weather boosts efficiency, and how to maximise your output.

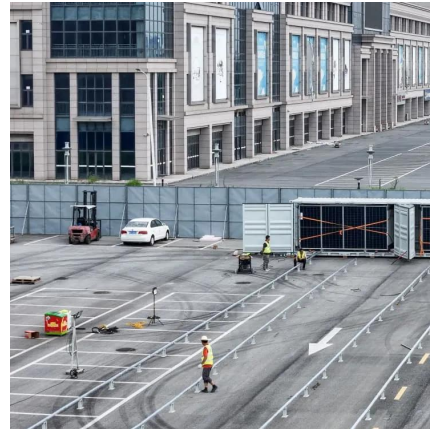
[Learn More](#)



[Seasonal Solar FAQ: Output in Winter, Monsoon, and Summer](#)

Discover how solar panel output changes across winter, monsoon, and summer. Learn about efficiency in various weather conditions and optimize your solar system.

[Learn More](#)



[Winter and Solar Inverters: Does Cold Weather Impact ...](#)

Discover how winter affects solar inverter performance. Learn about temperature sensitivity, reduced sunlight, and best practices to optimize efficiency in colder months. Stay ...

[Learn More](#)

Contact Us

For catalog requests, pricing, or partnerships, please visit:
<https://fundacjawandea-imk.pl>

Scan QR Code for More Information



<https://fundacjawandea-imk.pl>