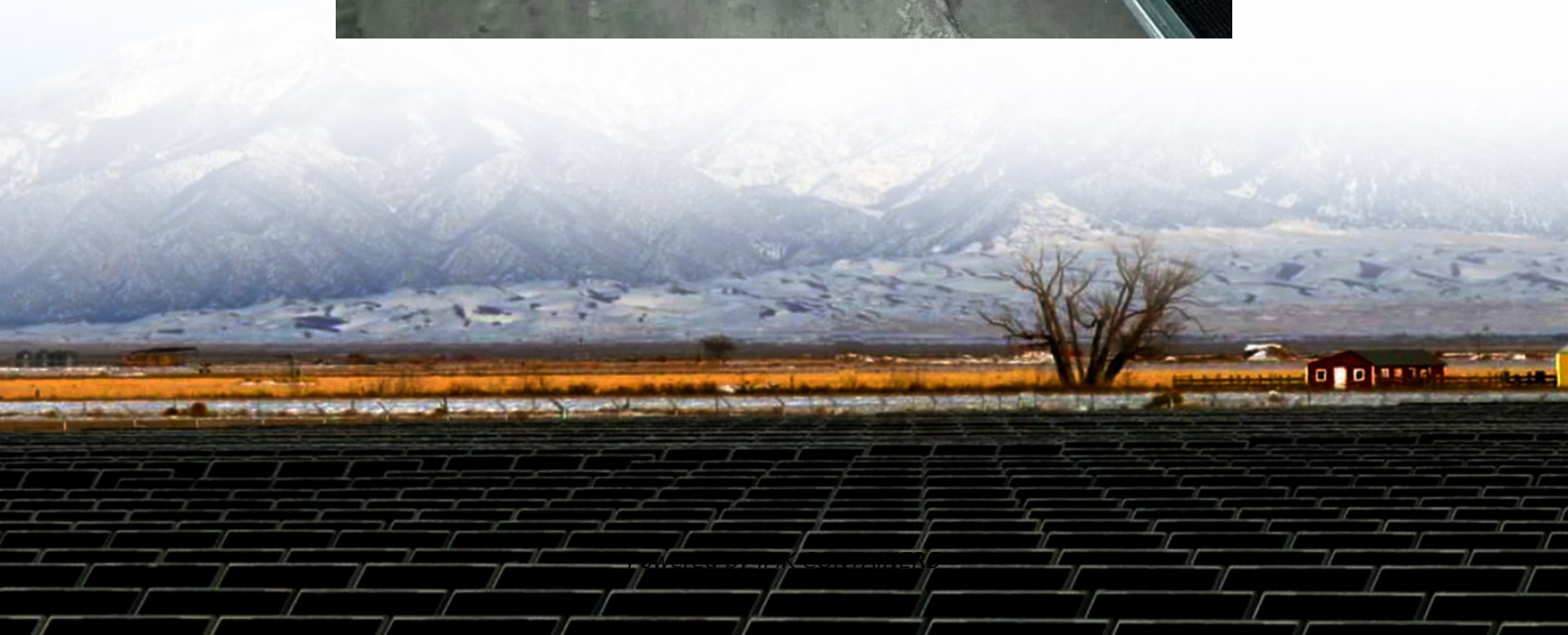
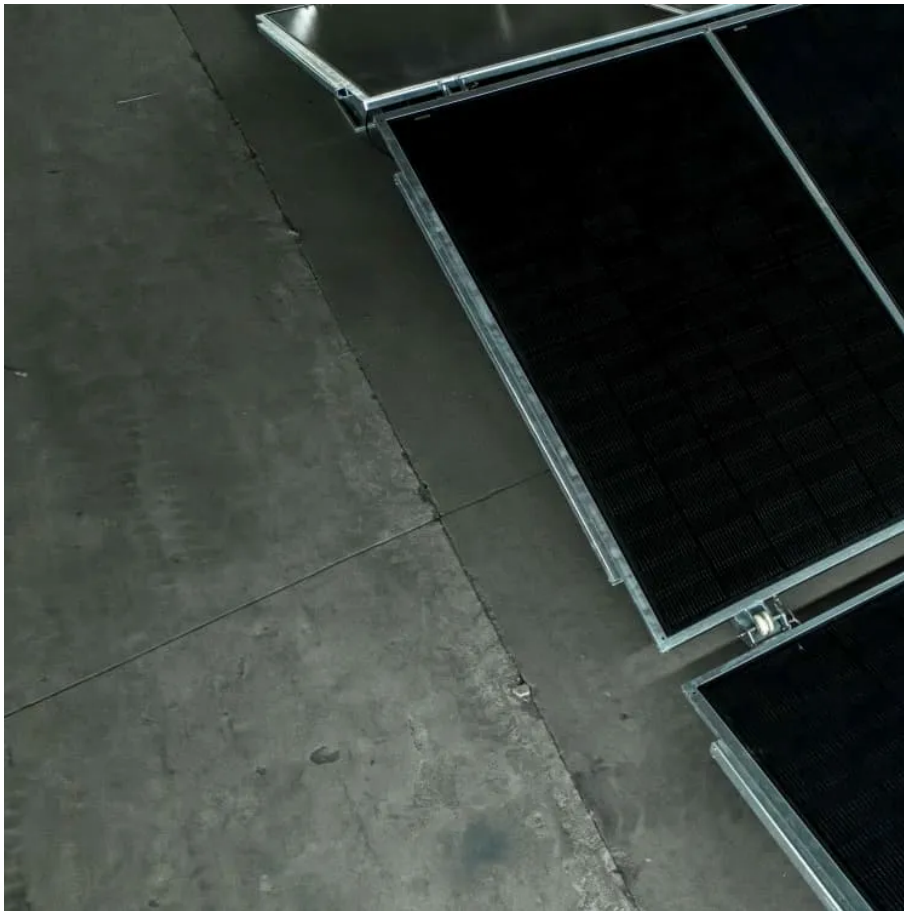


# Solar Panel Size and Wattage





## Overview

---

How much wattage does a solar panel take?

Solar panel sizes and wattage range from 250W to 450W, taking up 1.6 to 2 square metres per panel. One of the most important things to consider when getting solar panels for your home is the specific solar panel size and dimensions.

What are the dimensions of standard solar panels?

Most solar panels are about 1.5 inches thick. The typical classification of solar panel sizes is based on the solar cell size, but it's not very useful for most calculations.

What is the relationship between solar panel size and wattage?

The relationship between solar panel sizes and wattage calculate isn't always straightforward. Here's why: A 400W high-efficiency panel (22% efficiency) occupies the same roof space as a 320W standard panel (17% efficiency). This means you can generate 25% more power from the same area—crucial for space-constrained roofs.

How big should a commercial solar panel be?

For commercial solar panel installations, panels often range from 400W to 600W, with dimensions of approximately 195 x 99 x 3.81 cm (6.40 x 3.25 x 0.13 feet). Several factors affect the size of a solar panel, including the type of solar cells used, the desired wattage output, your property's size and the panel's overall efficiency.



## Solar Panel Size and Wattage

---



### [Solar Panel Sizes and Wattage Options Explained](#)

Choosing the right wattage depends on your energy needs, roof space, and sunlight availability. Higher-wattage panels reduce the number of panels needed, maximizing ...

[Learn More](#)



### [Solar Panel Size & Dimensions Guide 2025](#)

Complete guide to solar panel sizes and dimensions. Compare 60-cell vs 72-cell panels, weights, roof space requirements, and installation specs for 2025.

[Learn More](#)

### [Guide to Solar Panel Sizes & Dimensions \(October 2025\)](#)

Solar panel size refers to the total amount of power a solar panel can generate over a period of time Solar panel dimensions refers to the physical size of a solar panel Solar ...

[Learn More](#)



### [Solar Panel Size and Wattage Guide: What Works Best for ...](#)

Solar panel size, solar panel wattage, and how you can get the right solar panel size for your home.

[Learn More](#)





#### [The Ultimate Guide to Solar Panel Size, ...](#)

Introduction Solar Panel Size, Weight & Wattage  
Standard residential solar panels are typically around 5.8 feet long by 3.5 feet wide and weigh between 40 to 50 pounds. However, the exact dimensions depend ...

[Learn More](#)



#### [Solar Panel Size and Wattage Guide: What ...](#)

Solar panel size, solar panel wattage, and how you can get the right solar panel size for your home.

[Learn More](#)



#### [Solar Panel Sizes and Wattage Explained](#)

Solar panel size per kilowatt and wattage calculations depend on PV panel efficiency, shading, and orientation.

[Learn More](#)



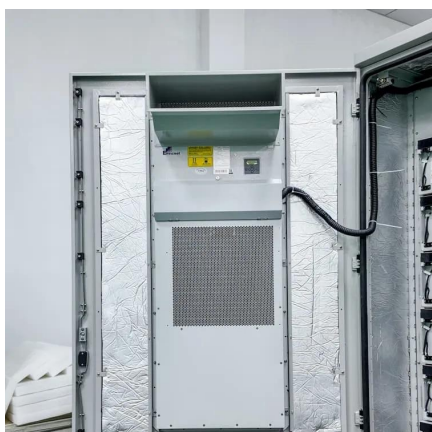
#### **Solar Panel Size and Wattage Chart: Standard Sizes &**



### Uses ...

The size of your roof or the land available for installation can determine the size needed for your energy requirements. Panels that are too big can be just as problematic as ...

[Learn More](#)



### [Standard Solar Panel Sizes And Wattages \(100W-500W ...](#)

This is the typical classification of solar panel sizes (based on the solar cell size). It's a bit theoretical and quite useless for most calculations. The only useful thing that we get from ...

[Learn More](#)



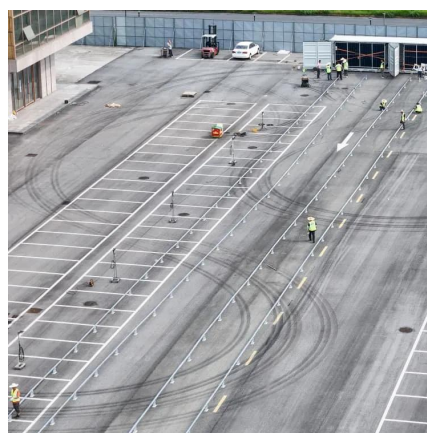
### [Solar Panel Sizes and Wattage Explained](#)



### [Solar Panel Size & Dimensions Guide 2025 , Complete Specs](#)

Complete guide to solar panel sizes and dimensions. Compare 60-cell vs 72-cell panels, weights, roof space requirements, and installation specs for 2025.

[Learn More](#)



### [Understanding Solar Panel Sizes and ...](#)

Discover essential insights on solar panel sizes and wattage to optimize your energy needs.

[Learn More](#)



Solar panel size per kilowatt and wattage calculations depend on PV panel efficiency, shading, and orientation.

[Learn More](#)



[Understanding Solar Panel Sizes and Wattage: A Complete ...](#)

Discover essential insights on solar panel sizes and wattage to optimize your energy needs.

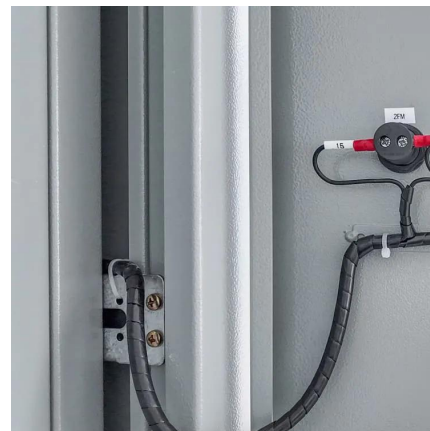
[Learn More](#)



[Standard Solar Panel Sizes And Wattages...](#)

Find out the average dimensions and areas of solar panels from 100W to 500W wattage. Learn how to calculate how many solar panels you can fit on your roof based on your roof size and solar panel wattage.

[Learn More](#)



**The Ultimate Guide to Solar Panel Size, Weight & Wattage ...**

Introduction Solar Panel Size, Weight & Wattage  
Standard residential solar panels are typically around 5.8 feet long by 3.5 feet wide and weigh between 40 to 50 pounds. ...

[Learn More](#)



[Detailed Guide to Solar Panel Size](#)





Looking to install solar panels? Learn about solar panel dimensions, wattage, cell types, and how to calculate the system size for your home's energy needs.

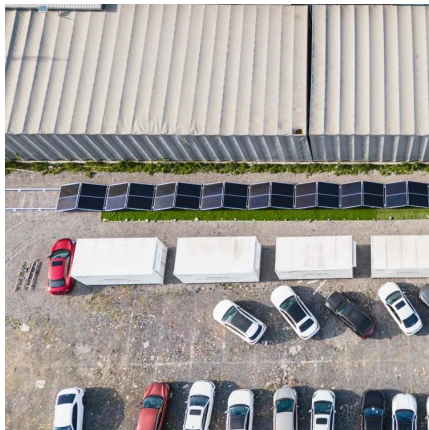
[Learn More](#)



[Detailed Guide to Solar Panel Size & Dimensions](#)

Looking to install solar panels? Learn about solar panel dimensions, wattage, cell types, and how to calculate the system size for your home's energy needs.

[Learn More](#)



## Contact Us

---

For catalog requests, pricing, or partnerships, please visit:  
<https://fundacjawandea-imk.pl>

**Scan QR Code for More Information**



<https://fundacjawandea-imk.pl>