

Single inverter power





Overview

What is a single-phase inverter?

A single-phase inverter is a type of inverter that converts DC source voltage into single-phase AC output voltage at a desired voltage and frequency and it is used to generate AC Output waveform means converting DC Input to AC output through the process of switching.

Can a single-phase inverter convert DC power to AC power?

In addition to residential solar applications, single-phase inverters are used in small-scale wind and hydroelectric power systems to convert generated DC power into grid-compatible AC power. In conclusion, the single-phase inverter is a fundamental component for converting DC power to AC power, with widespread applications in various fields.

What is a power inverter?

A power inverter, or inverter, is an electronic device or circuitry that changes direct current (DC) into alternating current (AC). Depending upon the number of phases of the AC output, there are several types of inverters. DC is the unidirectional flow of electric charge.

How does a single phase inverter work?

The current and voltage levels in each half will determine the efficiency and power of the single-phase inverter. The inverter then converts the DC voltage and current from the source into the appropriate AC voltage and current. Single-phase inverters are typically used in lighting, solar energy, HVAC systems, and industrial applications.



Single inverter power



[Single Phase Inverter](#)

Single Phase Inverter A single-phase inverter is a type of inverter that converts DC source voltage into single-phase AC output voltage at a desired voltage and frequency and it ...

[Learn More](#)

[Single Phase Inverter vs. Three Phase Inverter](#)

In modern power systems, inverters play a crucial role. Each type of inverter has its own set of advantages and disadvantages.. This article aims to explore the distinctions between single ...

[Learn More](#)



[Single-Phase String Inverter Systems Overview](#)

Solutions Single-phase string inverter systems convert the DC power generated by the photovoltaic (PV) panel arrays into the AC power fed into a 120 V / 220 V single-phase grid ...

[Learn More](#)



[10-kW, GaN-Based Single-Phase String Inverter With ...](#)

This reference design provides an overview into the implementation of a GaN-based single-phase string inverter with bidirectional power conversion system for Battery ...

[Learn More](#)



[Single Phase Inverter](#)

Conclusion In conclusion, the single-phase inverter is a fundamental component for converting DC power to AC power, with widespread applications in various fields. Its simplicity and cost ...

[Learn More](#)



[What is a Single Phase Output Inverter?](#)

A single phase output inverter is an electronic device that converts direct current (DC) power into alternating current (AC) power with a single sinusoidal waveform. In other words, it takes the electrical energy ...

[Learn More](#)



[Single-Phase Inverter - Electricity - Magnetism](#)

Explore the workings of single-phase inverters, their types, key components, and diverse applications in power systems and electric vehicles. Introduction to Single-Phase ...

[Learn More](#)

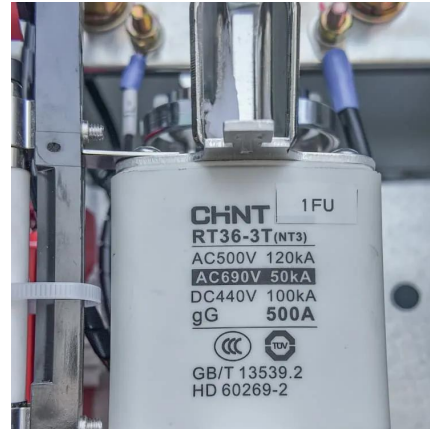


[Single-Phase Inverters](#)



Default Description Introduction Inverters are crucial components in power electronics because they transform DC input voltage to AC output voltage. Talking about single-phase inverters, ...

[Learn More](#)



[AN-CM-270 Design and Implementation of a Single ...](#)

AN-CM-270 This application note explores the use of a GreenPAK IC in Power Electronics Applications. This app note will demonstrate the implementation of a single-phase ...

[Learn More](#)



[Single-Phase Inverter - Electricity - Magnetism](#)

Introduction to Single-Phase Inverters Working Principle of A Single-Phase Inverter Types of Single-Phase Inverters Single-Phase Inverter Waveforms Key Components of A Single-Phase Inverter Applications of Single-Phase Inverters Conclusion A single-phase inverter operates by converting a DC input, often sourced from a battery or a fuel cell, into an AC output. This is achieved through a process known as switching. The DC input is switched in a pattern that generates a pseudo-AC waveform, usually a square wave, modified sine wave, or pure sine wave. The switching pattern is controlled See more on electricity-magnetism sunplusenergy

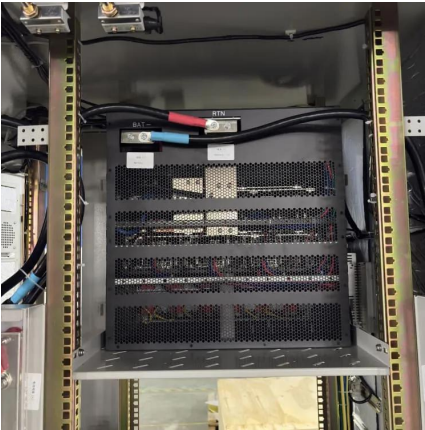


Single Phase Inverter - Types, Applications

Conclusion In conclusion, the single-phase inverter is a fundamental component for converting DC power to AC power, with widespread applications in various fields. Its simplicity and cost ...



[Learn More](#)



[Single-Phase Inverter , How It Works](#)

Single-Phase Inverter Waveforms Single-phase inverters come in a variety of waveform types. Each one is designed to handle different types of power and provide different levels of performance. The most common types of ...

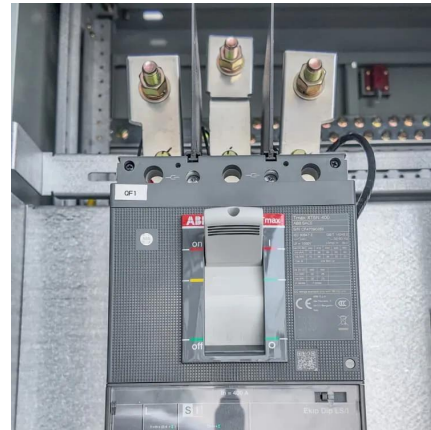
[Learn More](#)



[Single-Phase Inverter , How It Works](#)

Single-Phase Inverter Waveforms Single-phase inverters come in a variety of waveform types. Each one is designed to handle different types of power and provide different levels of ...

[Learn More](#)



[What is a Single Phase Output Inverter?](#)

A single phase output inverter is an electronic device that converts direct current (DC) power into alternating current (AC) power with a single sinusoidal waveform. In other ...

[Learn More](#)

Contact Us

For catalog requests, pricing, or partnerships, please visit:
<https://fundacjawandea-imk.pl>



Scan QR Code for More Information



<https://fundacjawandea-imk.pl>