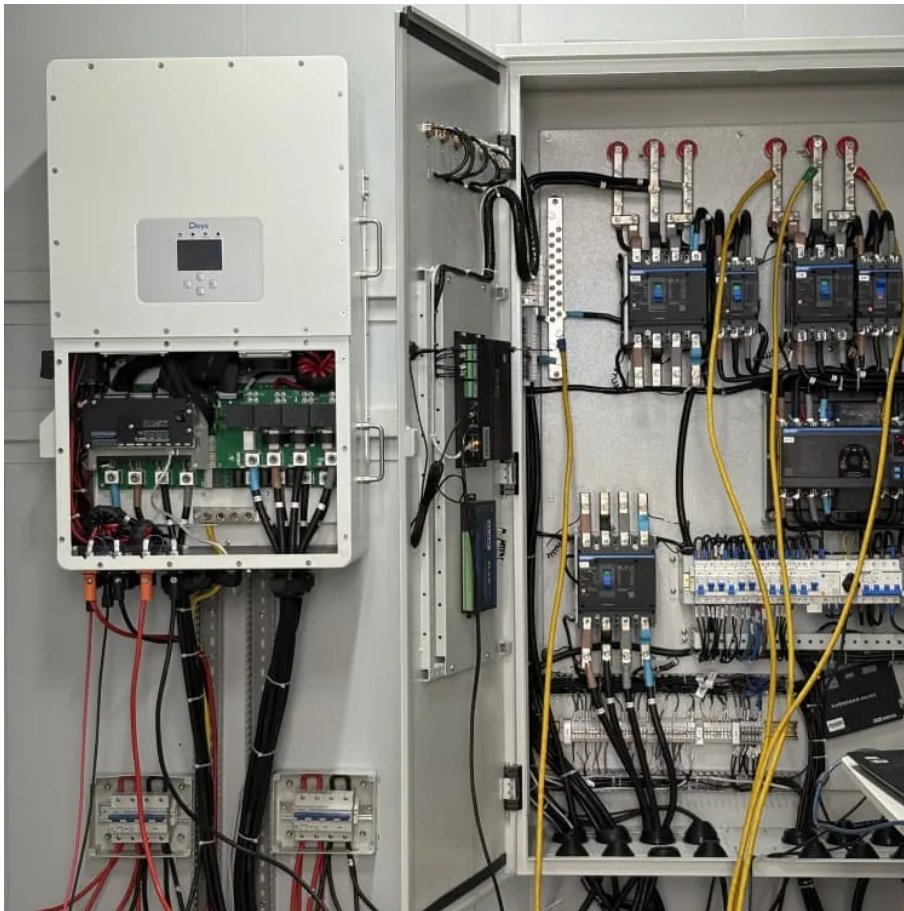


# Scenery Storage Garden





## Overview

---

What is the saleable area of scenery garden?

The saleable area of SCENERY GARDEN ranges from 408 sq.ft. to 1,370 sq.ft. Primary One Admission School Net for SCENERY GARDEN is 91. SCENERY GARDEN belongs to Sha Tin District for Secondary School Places Allocation Scheme.

Is Yuyuan Garden a must visit attraction in Shanghai?

Yuyuan Garden is one of the must visit attractions in Shanghai, check here to get the latest travel information on what to see, location, time to visit, transportation and so on.

What to do in Shanghai - Jiangnan-style gardens?

Take a stroll through Shanghai's Jiangnan-style gardens and savour their distinct charm. Yuyuan Garden Yuyuan Garden, located in the northeast of Huangpu district's old town, dates back over 400 years to the Ming Dynasty (1368-1644), serving as the private retreat for the Pan family.

Why should you visit Yuyuan Garden?

The garden's exquisite design, scenic beauty and classical architecture distinguish it as a Shanghai must-see. Renowned as "the crown of gardens in southeast China", Yuyuan Garden has welcomed leaders and celebrities from around the world.



## Scenery Storage Garden

---



### [Yuyuan Garden: Wandering into Shanghai's ...](#)

Located in the Huangpu District of Shanghai, next to the City of God Temple, Yuyuan Garden, or Yu Garden, has been around for more than 400 years. Since time immemorial, wandering through Yuyuan ...

[Learn More](#)



### [Scenery Garden|Fo Tan|Estate Info|Centaline Property](#)

Centaline Property provides latest residential properties information about Scenery Garden of Fo Tan, including estate details, locations, facilities and transportation, as well as transaction ...

### **Scenery**

Inner Garden - rockeries, ponds, pavilions, and towers; first laid out in 1709 and more recently recreated in 1956 by combining its east and west gardens. [clarification needed]

[Learn More](#)



### **Scenic Spots**

Experience Shanghai's stunning landscapes and landmarks with its top-class scenic spots, trendy spots and themed excursions.

[Learn More](#)



[Learn More](#)



[THE 10 BEST Shanghai Parks & Nature Attractions](#)

The old buildings in Yu Garden are beautiful and full of history, but the narrow passageways can feel very tight. It is often overcrowded with many visitors, which makes it difficult to fully enjoy ...

[Learn More](#)



[Yuyuan Garden: Wandering into Shanghai's Ancient Past](#)

Located in the Huangpu District of Shanghai, next to the City of God Temple, Yuyuan Garden, or Yu Garden, has been around for more than 400 years. Since time ...

[Learn More](#)



[Shanghai , The hidden garden in the centre of city](#)

There are even turtles in the pond, creating a very relaxing atmosphere. Both locals from Shanghai and tourists stroll through the garden to enjoy the scenery, and you can ...

[Learn More](#)



[Embrace Shanghai's enchanting hills\\_Close to Nature](#)



Stroll through the garden and savor the endless natural charm. [Photo/Shanghai Municipal Administration of Culture and Tourism] Nestled within Jing'an Park, the Bajing (eight ...

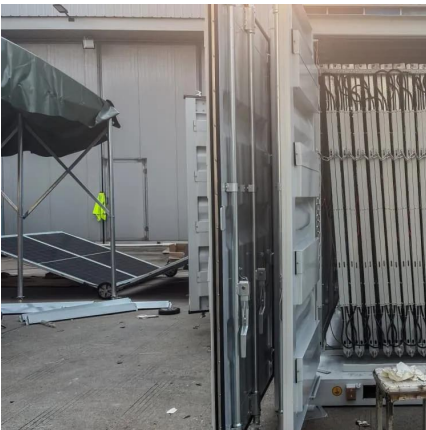
[Learn More](#)



[Exploring Shanghai's Jiangnan-style gardens](#)

Yuyuan Garden in Shanghai. [Photo/VCG] Amidst the hustle and bustle of Shanghai's vibrant metropolis lie hidden gems -- exquisite, tranquil Jiangnan-style gardens -- ...

[Learn More](#)



[Guyi Garden, Ancient Yi Garden, Shanghai](#)

Guyi Garden, one of the five classical gardens of Shanghai, attracts numerous visitors with its featured sceneries, especially the charm of bamboos.

[Learn More](#)



**Yuyuan Garden**

Yuyuan Garden is one of the must visit attractions in Shanghai, check here to get the latest travel information on what to see, location, time to visit, transportation and so on.

[Learn More](#)



[Scenery Garden|Fo Tan|Estate ...](#)



Centaline Property provides latest residential properties information about Scenery Garden of Fo Tan, including estate details, locations, facilities and transportation, as well as transaction records and listing details of ...

[Learn More](#)



#### Yuyuan Garden

Stroll through the garden and savor the endless natural charm. [Photo/Shanghai Municipal Administration of Culture and Tourism] Nestled within Jing'an Park, the Bajing (eight ...

[Learn More](#)



## Contact Us

---

For catalog requests, pricing, or partnerships, please visit:  
<https://fundacjawandea-imk.pl>

**Scan QR Code for More Information**



<https://fundacjawandea-imk.pl>