

# Railway base station equipment and power supply configuration





## Overview

---

What are the design guidelines for railway traction power substations?

RBDG-MAN-018-0102 page 13/28 Design guidelines Railway Energy Part 1 traction power system In traditional substations with transformers, the load imposed by the railway's traction power substations on the electric utility's 3-phase, will be single-phase, nonlinear and rapidly variable over time.

What is a railway substation?

Railway substations act as the intermediary between the national grid and the railway's traction network. Without them, it would be impossible to deliver power to trains at the correct voltage and frequency. Here's how a substation fits into the bigger power system: Receiving Power – Electricity is drawn from the high-voltage transmission grid.

What are traction power systems for Railways?

One of the most critical components of this network is the traction power system, and at the heart of it stands the railway substation. In this blog, we'll explore the fundamentals of traction power systems for railways, break down how substations work, and highlight why they are essential for safe, reliable, and sustainable rail transport.

What is included in a railway electrification & power supply document?

Railway electrification and power supply systems and equipment include, but are not limited to: The document includes detailed information on the manufacturers and suppliers and their products, along with contact details, to inform your purchasing decision.



## Railway base station equipment and power supply configuration

---



### [Railway Traction Power System Design Guidelines](#)

Design guidelines for railway traction power systems, covering regulations, standards, substations, protection, earthing, and EMC. For railway engineers.

[Learn More](#)

### [Railway Power Supply Systems](#)

Railway Power Supply equipment must be highly reliable and safe. In addition, today's equipment must also be economically efficient to accommodate installation in limited ...

[Learn More](#)



### [Unit Railway Power Supply Systems](#)

The picture on the left shows the railway overhead power lines. They transmit the electric power from the substation and distribution stations to the electrical equipment along ...

[Learn More](#)



### [EN 50155: The Essential Standard for Power Supply ...](#)

**ENSURING SAFETY IN MODERN RAIL SYSTEMS**  
Power distribution systems on trains, no matter their purpose, must be safe and reliable, which means complying with a host ...



[Learn More](#)



### [Railway Traction Power Supply and Electrification Solutions](#)

Railway electrification is of paramount importance to modern rail and urban transport systems. Contemporary railways require smart and energy-efficient traction power ...

[Learn More](#)



### [Composition and operation of railway power supply system](#)

The electrical power supply system provides power for railway - side signal equipment, communication equipment, lighting, station power consumption, etc., and transmits ...

[Learn More](#)



### **Traction power systems for electrified railways: evolution, ...**

Traction power systems (TPSs) play a vital role in the operation of electrified railways. The transformation of conventional railway TPSs to novel structures is not only a ...

[Learn More](#)



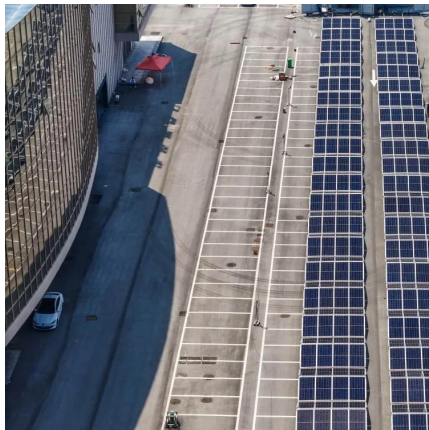




### [Traction Power System for Railways: Substation 101](#)

Learn how a railway traction Power System works with Substation 101 by Swartz Engineering, ensuring efficiency, safety, and reliability.

[Learn More](#)



### [Railway Traction Power Supply](#)

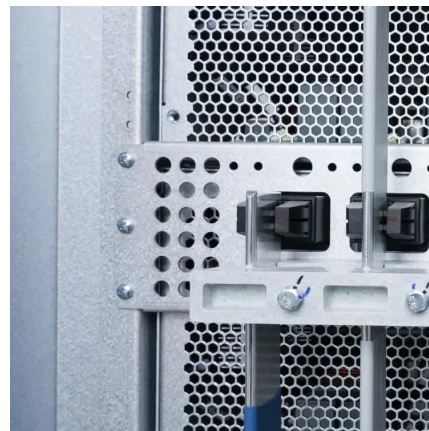
Our diverse power portfolio for railway industry is complemented by static frequency converter stations, power quality systems, network management systems, energy recuperation ...

[Learn More](#)

### [RBDG-MAN-018-0103\\_DG\\_RailwayEnergyPart1-TractionP...](#)

It forms a fully functional 2x25 kV ac traction power supply and distribution system and provides the traction power to the electrically powered vehicles on the high-speed railway ...

[Learn More](#)



## Contact Us

---

For catalog requests, pricing, or partnerships, please visit:  
<https://fundacjawandea-imk.pl>



## Scan QR Code for More Information



<https://fundacjawandea-imk.pl>