

Power module function and inverter





Overview

How a power module converts input energy into output energy?

During the power conversion process of the power module, switching power devices (such as MOSFETs, BJTs, IGBTs, etc.) play a crucial role. When the switching device is conducting, the power module can convert input energy into output energy.

What is a power module?

Here the power modules, which are responsible for power conversion, play a crucial role. Requirements for power modules not only depend on the type of vehicle – from motorcycles for daily use to high-performance racing cars and even trucks or trending eVTOLs – but also on their system integration.

What is the working principle of a power module?

The working principle of a power module is based on power electronics technology and control circuitry. Its core consists of switching power devices and control circuits. The following are detailed operational steps of power module operation: 1. Input Voltage Conversion.

What is an IGBT-inverter?

An IGBT-inverter is an inverter build with IGBT power modules to ensure high voltage/power switching functions. The IGBT power module is considered the 'heart' of the electrified drive train. Similar to a human heart distributing energy throughout our bodies, the power module functions as a human heart in the electric drive train for EV/HEVs.



Power module function and inverter



[Power semiconductors the key component for motor ...](#)

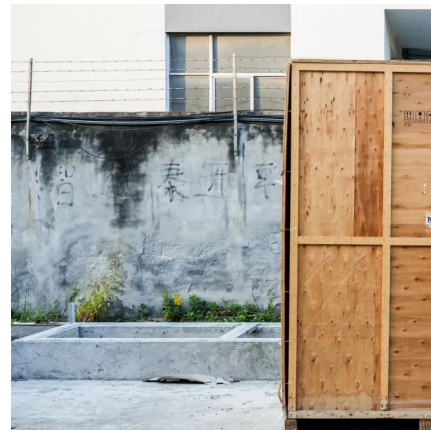
Putting it all together While integrating the rectifier, chopper and inverter into a single module delivers benefits in terms of power density and switching efficiency, motor ...

[Learn More](#)

[Power modules: driving efficiency in inverter ...](#)

Here the power modules, which are responsible for power conversion, play a crucial role. Requirements for power modules not only depend on the type of vehicle - from motorcycles for daily use to high ...

[Learn More](#)



Inverters and power modules are key in energy management ...

Inverters and power modules are key players in energy management - but testing methods need improvement By Sandy Klengel, group leader at the Fraunhofer IMWS May 27, ...

[Learn More](#)



[Inverter Functions & Application , Electrical ...](#)

The article provides an overview of inverter types, functions, and applications, particularly distinguishing between stand-alone, grid-tied, and battery backup inverters. It also covers key concepts like power factor ...



[Learn More](#)



[Inverter Functions & Application , Electrical Academia](#)

The article provides an overview of inverter types, functions, and applications, particularly distinguishing between stand-alone, grid-tied, and battery backup inverters. It also ...

[Learn More](#)



[Power modules: driving efficiency in inverter solutions](#)

Here the power modules, which are responsible for power conversion, play a crucial role. Requirements for power modules not only depend on the type of vehicle - from ...

[Learn More](#)



[IGBT Modules Deliver Efficiency in Inverter Applications](#)

Given the high-powers required, many central inverters use multiple conversion modules in parallel, with the number required determined by the power rating of each ...

[Learn More](#)





[Inverters and power modules are key in ...](#)

Inverters and power modules are key players in energy management - but testing methods need improvement By Sandy Klengel, group leader at the Fraunhofer IMWS May 27, 2025 Power Plants, Inverters

[Learn More](#)



Power Module : Working Principle, Structural Features, and ...

A power module is an electronic device used to convert one form of electrical energy into another for supply to specific electronic systems or devices. It typically comprises ...

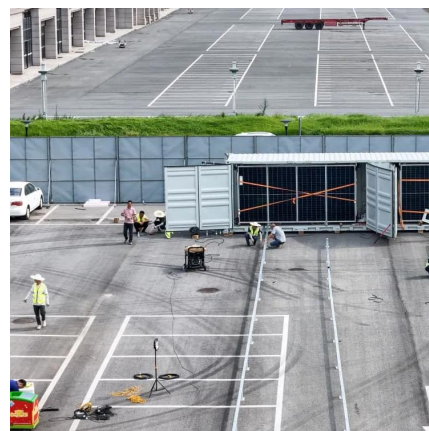
[Learn More](#)



[What is IGBT power module?](#)

An IGBT is a power semiconductor die and is the short form of insulated-gate bipolar transistor. An IGBT power module is the assembly and physical packaging of several IGBT power ...

[Learn More](#)



[The Role of Power Modules in Electric Vehicle Inverters](#)

Like gas-powered cars, electric cars have key parts that help them run properly. One of these all-important components is the power module located in the electric vehicle ...

[Learn More](#)



[3-phase Inverter Power Module](#)

INTRODUCTION This application note provides practical guidelines for designing with the Motion SPM 5 Series power modules. This series of Intelligent Power Modules (IPM) for 3-phase ...

[Learn More](#)



[Understanding Module IGBT: Advantages and ...](#)

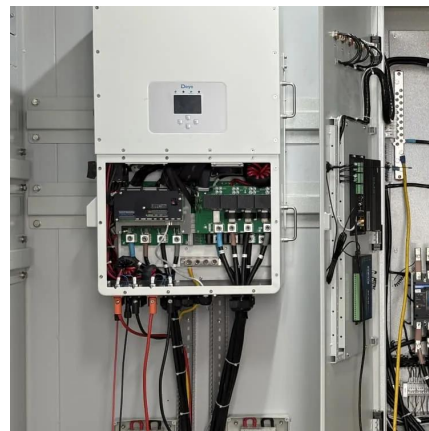
What are IGBT modules and why are they fundamental in power electronics? Our article demystifies the module IGBT, detailing its function, advantages, and wide-ranging applications from high-power ...

[Learn More](#)

Understanding Module IGBT: Advantages and Applications in Power

What are IGBT modules and why are they fundamental in power electronics? Our article demystifies the module IGBT, detailing its function, advantages, and wide-ranging ...

[Learn More](#)



[Power Module : Working Principle, Structural ...](#)

A power module is an electronic device used to convert one form of electrical energy into another for supply to specific electronic systems or devices. It typically comprises an input terminal for receiving the raw ...

[Learn More](#)





Contact Us

For catalog requests, pricing, or partnerships, please visit:
<https://fundacjawandea-imk.pl>

Scan QR Code for More Information



<https://fundacjawandea-imk.pl>