

Power distribution facilities for mobile base station equipment





Overview

What is a mobile substation?

Mobile substations are a type of power distribution system that can be transported and installed quickly and easily in different locations. They are used to provide temporary or emergency power supply to areas where the grid is unavailable or has been damaged, such as construction sites, disaster zones, remote areas, or events.

Are Mobile substations the future of power distribution?

As the energy landscape evolves, mobile substations are poised to become even more integral to power distribution strategies. Several trends and innovations are shaping their future: Advances in transformer and switchgear technology are enhancing the performance and efficiency of mobile substations.

What is a Chint mobile substation?

Please use different keywords. CHINT mobile substations provide reliable power supply across all stages of generation, transmission, transformation, and distribution. Grid operators and power generation companies focus on ensuring stable electricity supply to meet customer demands swiftly, even during emergencies.

What is a metering system in a mobile substation?

Metering system: The metering system is the component of a mobile substation that measures and records the electrical parameters of the power flow, such as voltage, current, power, frequency, etc. The metering system has to be designed to provide accurate and reliable data for monitoring and billing purposes.



Power distribution facilities for mobile base station equipment



Revolutionizing Power Distribution: The Role and Impact of Mobile

In an era where the demand for reliable and uninterrupted power supply is escalating, the role of mobile substations is becoming increasingly significant. These versatile ...

[Learn More](#)

[Application Note: Distributed Base Stations](#)

Distributed Base Stations The most popular type of Wireless Base Station deployment (cell site) consists of a Base Transceiver Station (BTS) located in close proximity to the antenna tower.

...

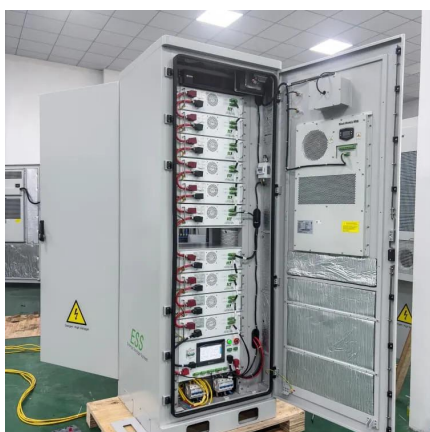
[Learn More](#)



[BTS base station on sales](#)

6. Dynamic environment monitoring system
Mobile base stations generally with multiple sites, limited transmission resources and quantities of power equipment, unstable power supply and ...

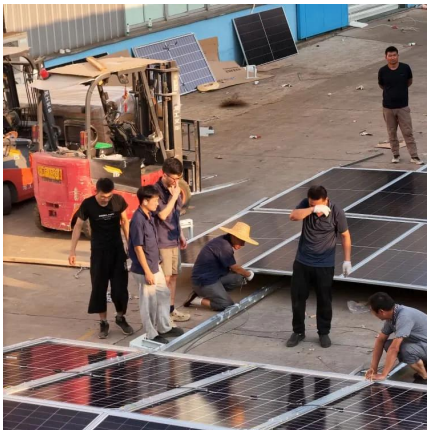
[Learn More](#)



[IMG Portable & Mobile Substations](#)

IMG designs and manufactures various portable power distribution equipment used to convert incoming power in order to supply specific voltages to electrical equipment at site. ...

[Learn More](#)



Base Stations

Power consumption: Thus, permanent power supply is needed for the operation of base stations; energy consumption required to operate these facilities contributes significantly ...

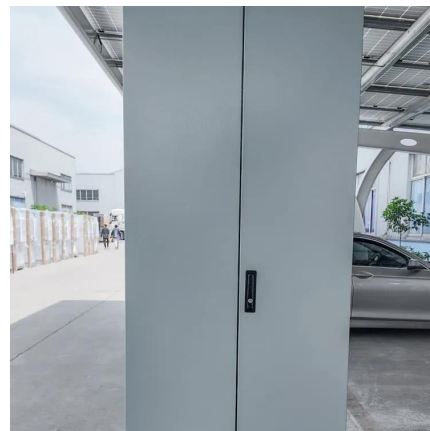
[Learn More](#)



[Site Power Facility , Huawei Digital Power](#)

Huawei Site Power Facility offers energy-efficient, low-carbon power supply solutions, enabling carriers to build environmentally sustainable, resilient networks for modern ...

[Learn More](#)



Mobile Substations Solution , Transmission Grid , CHINT global

CHINT mobile substations provide reliable power supply across all stages of generation, transmission, transformation, and distribution. Grid operators and power ...

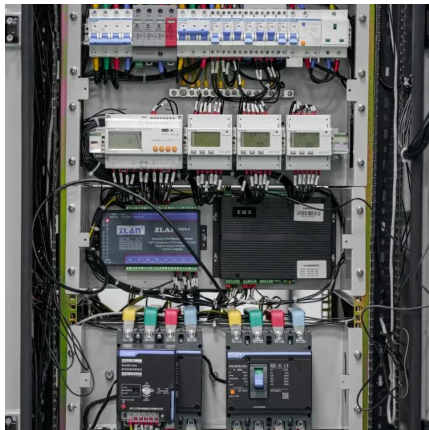
[Learn More](#)



[BTS base station on sales](#)

6. Dynamic environment monitoring system
Mobile base stations generally with multiple sites, limited transmission resources and quantities of power equipment, unstable power supply and harsh environments, Therefore, ...

[Learn More](#)



[Optimum sizing and configuration of electrical system for](#)

With increasing market competition and declining revenues in mobile services, network operators are compelled to optimize the electrical system of telecommunication base ...

[Learn More](#)

[Mobile Substations Solution , Transmission ...](#)

CHINT mobile substations provide reliable power supply across all stages of generation, transmission, transformation, and distribution. Grid operators and power generation companies focus on ensuring stable ...

[Learn More](#)



Base Stations

Power consumption: Thus, permanent power supply is needed for the operation of base stations; energy consumption required to operate these facilities contributes significantly to carbon emissions and ...

[Learn More](#)



[Mobile Substations: A Comprehensive Guide](#)

Mobile substations are portable power distribution systems that can be quickly set up in different locations. They provide temporary or emergency power to areas without grid ...

[Learn More](#)



[Telecom Base Station Power System Solution](#)

The EverExceed base station system is equipped with an AC and DC system, which consists of an AC distribution box/panel, a -48V high-frequency switch combined power supply (including ...

[Learn More](#)

[Mobile Substations: A Comprehensive Guide](#)

Mobile substations are portable power distribution systems that can be quickly set up in different locations. They provide temporary or emergency power to areas without grid access, like construction sites, ...

[Learn More](#)



Contact Us

For catalog requests, pricing, or partnerships, please visit:
<https://fundacjawandea-imk.pl>



Scan QR Code for More Information



<https://fundacja-wandea-imk.pl>