

Portable power supply keeps discharging





Overview

Why does my Charger keep disconnecting?

Problems with the power supply can also lead to a charger that keeps disconnecting. Using an unstable power source or an incompatible charger can disrupt the charging process. For instance, plugging your charger into a faulty outlet or a power strip overloaded with devices can result in an inconsistent power supply.

Why is my portable charger not working?

Before diving into fixes, let's take a look at the typical reasons a portable charger not working. Here are the most common causes: Sometimes, the lithium battery inside degrades or becomes unstable—especially if it's been overcharged, deeply discharged too often, or exposed to extreme temperatures. Some signs of battery damage include:.

Why is my portable power system not turning on?

Portable power system is not turning on. Possible causes: Start with a full recharge. If that doesn't do the trick, press and hold the power button for 10-15 seconds. Some models require a hard reset. Still no luck?

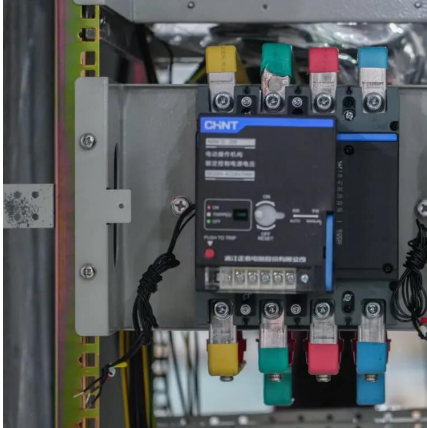
Disconnect all loads & chargers, wait five minutes, then reconnect. Sometimes the internal circuit needs a breather. 2.

What if my portable charger is broken?

Before assuming your portable charger is broken, it's smart to start with the simple stuff. Many charging problems aren't actually about the power bank, they're about what it's connected to. Loose or damaged cables are a common cause. Even if the wire looks fine on the outside, it might be broken inside, try using a different cable you know works.



Portable power supply keeps discharging



[Why Charger Keeps Disconnecting? Fix in 4 Steps , UGREEN EU](#)

3. Power Supply Issues Problems with the power supply can also lead to a charger that keeps disconnecting. Using an unstable power source or an incompatible charger can ...

[Learn More](#)

[10 Portable Power Station Issues & Easy Fixes That Work](#)

Learn troubleshooting your portable power station with 10 common issues, their causes & expert fixes designed for off-grid power users by Topo DC Power.

[Learn More](#)



[Why does my portable charger keep turning off](#)

If your portable charger turns off when you charge it: Begin by determining whether or not your portable charger is working. If it cannot supply power to a cell phone, this may indicate an ...

[Learn More](#)

[How to Reset Power Bank \(Step-by-Step Guide\)](#)

Learn how to reset power bank and get it working again with our simple step-by-step guide. Get tips to keep power bank in good condition for longer use.

[Learn More](#)



[Why Does My Portable Charger Keep Turning Off](#)

Have you ever experienced the frustration of your portable charger constantly turning off, just when you need it the most? This common issue can be a real inconvenience, especially when ...

[Learn More](#)



[Why Does My Portable Charger Keep Turning Off? Top 6 ...](#)

Why does my portable charger keep turning off? Discover common causes and smart fixes for when your power bank keeps turning off unexpectedly.

[Learn More](#)



[How to Reset Power Bank \(Step-by-Step Guide\)](#)

When Do You Need to Reset Your Power Bank? How to Reset A Power Bank? How to Reset Anker Power Bank? Power Bank Maintenance Tips Conclusion FAQs Wondering why your Anker power bank not charging and how to rest it? If you have an Anker power bank, for example, Anker PowerCore 20000, you may need the following steps to reset your battery charger. 1. Plug the Micro input port and USB output port together using the USB cable provided. 2. Keep the cable connected for



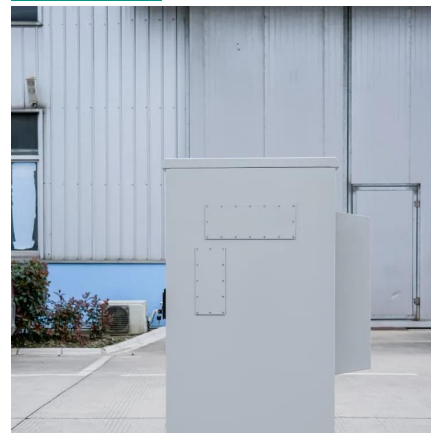


approximately 15 seconds before See more on anker Best Portable Charge

Why does my portable charger keep turning off

If your portable charger turns off when you charge it: Begin by determining whether or not your portable charger is working. If it cannot supply power to a cell phone, this may indicate an ...

[Learn More](#)



[Why Charger Keeps Disconnecting? Fix in 4 ...](#)

3. Power Supply Issues Problems with the power supply can also lead to a charger that keeps disconnecting. Using an unstable power source or an incompatible charger can disrupt the charging process. For ...

[Learn More](#)



[Why Is My Portable Charger Not Working? 5 Quick Fixes](#)

Having that "Why Is My Portable Charger Not Working?" moment? This guide covers 5 smart fixes to help you troubleshoot and get it working again fast.

[Learn More](#)

[Why Is My Portable Charger Not Working? Troubleshooting ...](#)

Why is my portable charger not working? Common issues include faulty cables, drained battery, overheating, charging port debris, or software glitches. Check connections, test cables, clean ...

[Learn More](#)





Portable Charger Not Working? How to Tell If It's Dead or ...

Portable charger not working and unresponsive? If it completely stopped working, this guide helps you figure out if it's worth saving--or if it's time to let go.

[Learn More](#)

[How to Fix a Power Bank That Keeps Shutting ...](#)

Learn why your power bank keeps turning off and how to fix it. A 2025 guide to solving common portable charger issues with practical tips.

[Learn More](#)



[How to Fix a Power Bank That Keeps Shutting Down](#)

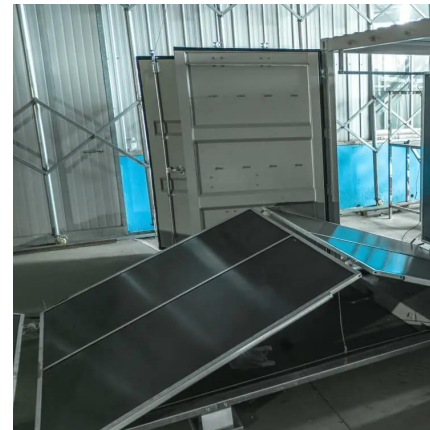
Learn why your power bank keeps turning off and how to fix it. A 2025 guide to solving common portable charger issues with practical tips.

[Learn More](#)

[Portable Charger Not Working? How to Tell If...](#)

Portable charger not working and unresponsive? If it completely stopped working, this guide helps you figure out if it's worth saving--or if it's time to let go.

[Learn More](#)





Contact Us

For catalog requests, pricing, or partnerships, please visit:
<https://fundacjawandea-imk.pl>

Scan QR Code for More Information



<https://fundacjawandea-imk.pl>