

Port Moresby substation 5g network base station





Overview

What is Port Moresby power station?

The Port Moresby Power Station will provide reliable power to Port Moresby and is the lowest cost dedicated grid connected thermal generation in the country. Replacing heavy fuel oil and diesel, the gas-fired power plant also brings a material reduction in the environmental impact from power generation in PNG.

How many maritime 5G base stations are there in Singapore?

MPA said five Maritime 5G base stations have been installed and operationalised as of 2024. Up to seven more base stations will be operationalised by 2025 to complete Maritime 5G coverage in all Singapore port's major fairways, anchorages, terminals and boarding grounds.

How many maritime 5G base stations will be operational by 2025?

The Maritime and Port Authority of Singapore (MPA) on Wednesday (5 March) said more Maritime 5G base stations will be operational by 2025 to provide new maritime services and innovations such as digital bunkering operations. MPA said five Maritime 5G base stations have been installed and operationalised as of 2024.

How will Singapore's maritime 5G network improve connectivity?

“With the enhancement of coverage of the Maritime 5G network, users of the Singapore port will experience stronger and more stable connectivity. The enhanced coverage is also expected to unlock new 5G-enabled maritime services and innovations,” it said on its website.



Port Moresby substation 5g network base station



CE Group

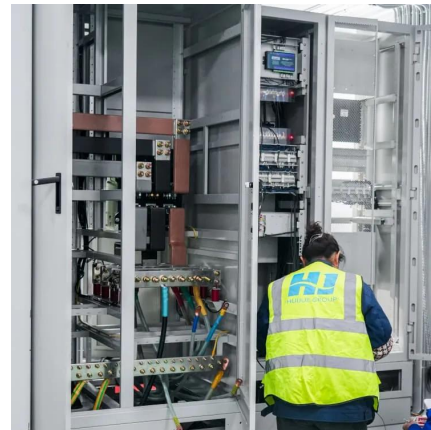
The POM Power Station will generate 58MW of base load power for the Port Moresby power grid. This will be accomplished through the newly constructed 66kV power line and substation network.

[Learn More](#)

Port of Singapore to install more 5G base stations, enabling ...

Up to seven more base stations will be operationalised by 2025 to complete Maritime 5G coverage in all Singapore port's major fairways, anchorages, terminals and ...

[Learn More](#)



[3G / 4G / 5G coverage in Port-Moresby, National Capital ...](#)

This map represents the coverage of 2G, 3G, 4G and 5G mobile networks in Port-Moresby, National Capital District. See also : mobile bitrates map in Port-Moresby, National Capital District.

[Learn More](#)



[Shanghai has opened over 2,300 5G base stations for ...](#)

Shanghai is accelerating the construction of a global dual-ten-gigabit city marked by 5G-A and ten-gigabit optical networks. The "5G Sea Access" and "Broadband Maritime Frontier" ...

[Learn More](#)



[47356-002: Power Sector Development Project](#)

The project will support the strengthening and expansion of the transmission and distribution system within the main power grids of PNG Power Limited (PPL) by (i) expanding ...

[Learn More](#)



[NEW EXPRESS FEEDERS TO IMPROVE PORT...](#)

Port Moresby's Central Business District is one of the main target areas. Two new 11kV Express Feeder lines will be constructed, which will take power from the new Kilakila substation, relieving the current ...

[Learn More](#)



POM Power Station

The project involved the design and construction of the POM Power Plant. The project allowed the Plant to produce 58MW base load power to the Port Moresby power grid through a new 66kv power line and ...

[Learn More](#)



CE Group



The POM Power Station will generate 58MW of base load power for the Port Moresby power grid. This will be accomplished through the newly constructed 66kV power line and substation ...

[Learn More](#)



[3G / 4G / 5G coverage in Port Moresby, Papua New Guinea](#)

This map represents the coverage of 2G, 3G, 4G and 5G mobile network in Port Moresby. See also : mobile bitrates map in Port Moresby and Bmobile, Digicel Mobile, Telikom Mobile mobile ...

[Learn More](#)



Analysis of the Impact of Substation Switching Operations on 5G Base

This paper proposes an analysis method of an electromagnetic disturbance at the antenna feeder port of a 5G base station under the condition of switching operation of a substation.

[Learn More](#)



POM Power Station

The project involved the design and construction of the POM Power Plant. The project allowed the Plant to produce 58MW base load power to the Port Moresby power grid ...

[Learn More](#)

[47356-002: Power Sector Development ...](#)



The project will support the strengthening and expansion of the transmission and distribution system within the main power grids of PNG Power Limited (PPL) by (i) expanding and upgrading transmission lines ...

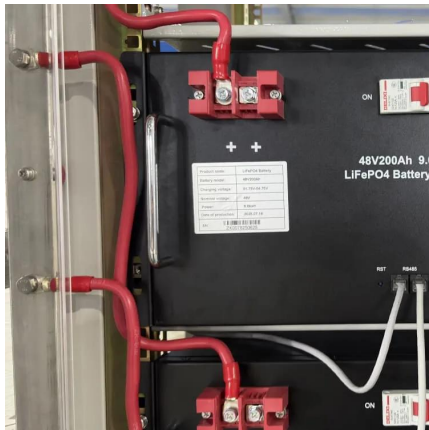
[Learn More](#)



[NEW EXPRESS FEEDERS TO IMPROVE PORT MORESBY...](#)

Port Moresby's Central Business District is one of the main target areas. Two new 11kV Express Feeder lines will be constructed, which will take power from the new Kilakila ...

[Learn More](#)



[Papua New Guinea substation 5G base station](#)

About Papua New Guinea substation 5G base station At SolarTech Innovations, we specialize in comprehensive photovoltaic solutions including hybrid electric systems, high-efficiency solar ...

[Learn More](#)



Contact Us

For catalog requests, pricing, or partnerships, please visit:
<https://fundacjawandea-imk.pl>



Scan QR Code for More Information



<https://fundacjawandea-imk.pl>