

Piggyback 12V inverter





Overview

What is a piggyback ® wire converter?

The PiggyBack ® Wire Converter is a 0.035" outer diameter wire converter that can be delivered over and locked onto a 0.014" guidewire to allow subsequent delivery of 0.035" compatible catheters, sheaths and devices.

What is a 12V DC power inverter?

This is where a power inverter comes in. Definition and Working Principle A 12V DC power inverter is a device that converts low-voltage direct current (DC) power from a 12V battery (such as a car battery or deep-cycle battery) into 120V alternating current (AC) power, making it suitable for household appliances and electronic devices.

Are 12V inverters commonly used in RVs and solar power systems?

Yes, 12V inverters are commonly used in RVs and solar power systems. When choosing an inverter for these setups, ensure that it is compatible with your battery bank and solar panel capacity. This ensures your system runs efficiently and can handle the load of various devices without issues.

What is a hybrid solar inverter 12V/24V with PWM Charger?

Overall, the hybrid solar inverter 12V/24V with PWM charger is an efficient and reliable solution for small to medium-sized solar installations. It combines the functions of a solar inverter and a battery charger, making it an all-in-one solution for powering your home or business with solar energy.



Piggyback 12V inverter



[12v hybrid solar inverters complete guide with battery ...](#)

Intelligent power management begins with the right inverter technology. For solar professionals and high-demand operations, 12V hybrid inverters deliver versatile performance ...

[Learn More](#)

[12 Volt DC Power Inverter: In-Depth Learning ...](#)

A 12-volt DC power inverter is an essential device for converting 12V direct current (DC) from a battery into 120V alternating current (AC), allowing you to power standard household appliances on ...

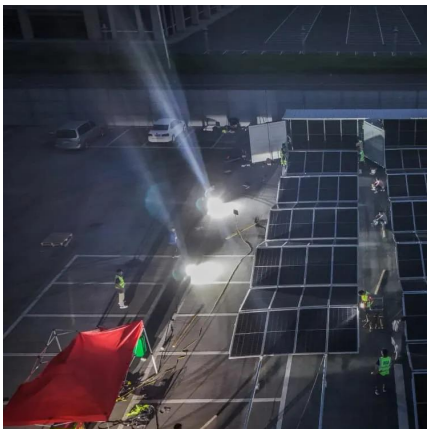
[Learn More](#)



[Hybrid Solar Inverter 12V 24V for Solar System with PWM ...](#)

The 12V/24V hybrid solar inverter is designed to work with 12V or 24V solar systems, making it ideal for small to medium-sized solar installations. It features a Pulse Width Modulation (PWM) ...

[Learn More](#)



[SMA SPEEDWIRE/WEBCONNECT Piggy-Back Installation Manual](#)

View and Download SMA SPEEDWIRE/WEBCONNECT Piggy-Back installation manual online. Communication Interface for SMA inverters.



SPEEDWIRE/WEBCONNECT Piggy-Back ...

[Learn More](#)



[EG4® 12PV HYBRID INVERTER](#)

CONNECTIONS & PARALLELING GUIDE This document contains information to guide the end-user through the connections and overview for both inverter and ...

[Learn More](#)

[SMA BLUETOOTH PIGGY-BACK PLUS User Manual](#)

The Bluetooth Piggy-Back reads inverter data and sends the data to a communication product with SMA Bluetooth Wireless Technology. You can read or configure the inverter data using ...

[Learn More](#)



[12 Volt DC Power Inverter: In-Depth Learning and Buying ...](#)

A 12-volt DC power inverter is an essential device for converting 12V direct current (DC) from a battery into 120V alternating current (AC), allowing you to power standard ...

[Learn More](#)



SMA, SWPB-US-10, Piggy-Back with Ethernet Communication US

SMA, SWPB-US-10, Piggy-Back with Ethernet Communication US - Webconnect for classic US-12 and TL-12 inverters. The SMA Bluetooth Piggyback Card allows to communicate with the ...

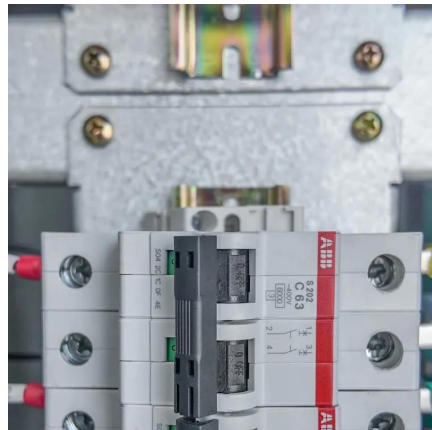
[Learn More](#)



SMA BLUETOOTH® PIGGY-BACK

The SMA Bluetooth Piggy-Back is updated via the Sunny Explorer. It is not required to replace the Piggy-Back. Existing settings and data of the inverter will be saved ...

[Learn More](#)



SMA PIGGY BACK WITH ETHERNET COMMUNICATION US ...

Webconnect for classic US-12 and TL-12 inverters. The SMA Bluetooth Piggyback Card allows to communicate with the Sunny Beam or Sunny WebBox via wireless bluetooth technology. ...

[Learn More](#)



SMA BLUETOOTH PIGGY-BACK PLUS User ...

The Bluetooth Piggy-Back reads inverter data and sends the data to a communication product with SMA Bluetooth Wireless Technology. You can read or configure the inverter data using the communication product.

[Learn More](#)



[Hybrid Solar Inverter 12V 24V for Solar ...](#)

The 12V/24V hybrid solar inverter is designed to work with 12V or 24V solar systems, making it ideal for small to medium-sized solar installations. It features a Pulse Width Modulation (PWM) charger that ensures that the ...

[Learn More](#)



SWPB-US-10: Piggyback Troubleshooting for Installation and ...

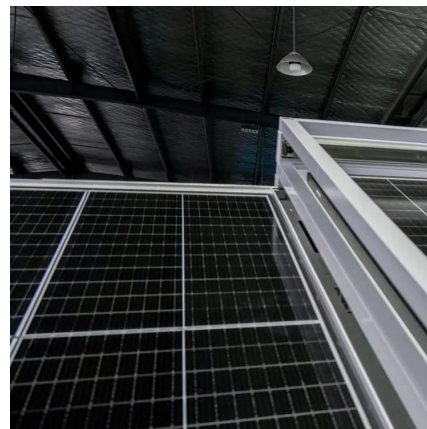
Follow the steps in this article to verify the SMA Speedwire-Webconnect Piggyback (SWPB-US-10) is properly mounted and wired in your SMA inverter (SB-US-12 or ...

[Learn More](#)

[SMA PIGGY BACK WITH ETHERNET ...](#)

Webconnect for classic US-12 and TL-12 inverters. The SMA Bluetooth Piggyback Card allows to communicate with the Sunny Beam or Sunny WebBox via wireless bluetooth technology. Install one card per each ...

[Learn More](#)



Contact Us

For catalog requests, pricing, or partnerships, please visit:
<https://fundacjawandea-imk.pl>



Scan QR Code for More Information



<https://fundacja-wandea-imk.pl>