

Outdoor power consumption is fast in winter





Overview

Does spending less time outdoors increase energy consumption?

Spending less time outdoors may increase household energy consumption. When people spend more time at home, indoor lighting, heating, cooling and household appliances are likely to be used more frequently, leading to higher energy consumption (Wu et al., 2023).

How does weather affect energy consumption?

The weather impacts energy consumption in several ways. This article will explore the impact of different variables including temperature, humidity, precipitation and wind on residential electricity consumption. Sunshine sensitivities reveal that households may be less flexible in their activities/routines on workday mornings.

Does winter weather affect power demand?

Our results indicate a significant decrease in average power demand, with a slight reduction in peak demand during cold waves, driven by rising winter temperatures. This trend may give the misleading perception of a reduction in grid constraints.

Will warmer temperatures reduce winter power demand?

Overall, future warmer temperatures are projected to significantly reduce winter power demand, consistent with prior studies 13, 18, 19. This temperature-sensitive reduction becomes more pronounced over longer time horizons and higher greenhouse gas emission scenarios.



Outdoor power consumption is fast in winter



[The Impact of Weather on Your Home's ...](#)

The weather impacts energy consumption in several ways. This article will explore the impact of different variables including temperature, humidity, precipitation and wind on residential electricity ...

[Learn More](#)

[Outdoor power consumption is fast in winter](#)

In winter and spring, electricity usage starts increasing in the morning around 5 a.m. People begin getting ready for work and school and, on a cold morning, turn the heat. Mr. Electric explains ...

[Learn More](#)



[Impact of residential morphology on outdoor thermal ...](#)

Urban morphology simultaneously influences outdoor thermal comfort (OTC) and building energy consumption (BEC). However, the quantitative impact of ur...

[Learn More](#)

[Understanding the Factors Behind Winter ...](#)

Explore factors driving winter peak electricity demand, from heating needs to weather impacts, and how they affect energy consumption patterns.

[Learn More](#)



Understanding the Factors Behind Winter Peak Electricity ...

Explore factors driving winter peak electricity demand, from heating needs to weather impacts, and how they affect energy consumption patterns.

[Learn More](#)



The impacts of temperature on residential electricity consumption ...

Global warming leads to the problem of climate adaptability, which makes residents' electricity consumption behavior more sensitive to temperature. Understanding the shape of ...

[Learn More](#)



[Rising power system strains despite decreasing heating ...](#)

However, only few studies have specifically examined the variability in power demand, with most suggesting that the standard deviation of winter energy consumption--and ...

[Learn More](#)

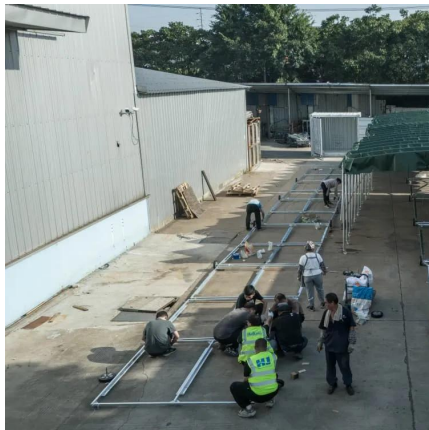




[How Cold Weather Impacts Your Electricity Usage](#)

Knowing how cold weather and thermostat settings connect to electricity demand is important for managing your energy use in winter. The Science Behind Cold Weather and ...

[Learn More](#)



[Energy Consumption and Outdoor Thermal Comfort ...](#)

This study aims to investigate the characteristics of energy consumption and outdoor thermal comfort within the high-density urban fabric of Changsha. Two different types ...

[Learn More](#)

[Extreme temperatures and household energy ...](#)

In summary, increased extreme temperatures have led to higher household energy consumption, but the impact varies; households in low-income, rural, and Southern regions have a weaker capacity to afford ...

[Learn More](#)



[How Cold Weather Impacts Your Electricity ...](#)

Knowing how cold weather and thermostat settings connect to electricity demand is important for managing your energy use in winter. The Science Behind Cold Weather and Power Consumption The increase ...

[Learn More](#)



[Impact of residential morphology on outdoor thermal ...](#)

Semantic Scholar extracted view of "Impact of residential morphology on outdoor thermal comfort and building energy consumption in winter and summer: A case study" by ...

[Learn More](#)



[Extreme temperatures and household energy consumption ...](#)

In summary, increased extreme temperatures have led to higher household energy consumption, but the impact varies; households in low-income, rural, and Southern regions ...

[Learn More](#)



[The Impact of Weather on Your Home's Energy Consumption](#)

The weather impacts energy consumption in several ways. This article will explore the impact of different variables including temperature, humidity, precipitation and wind on ...

[Learn More](#)



Contact Us

For catalog requests, pricing, or partnerships, please visit:
<https://fundacjawandea-imk.pl>



Scan QR Code for More Information



<https://fundacjawandea-imk.pl>