

Not communicating via a base station





Overview

Why is my base station not connecting?

If the above solutions don't resolve your base station connectivity issues, the problem can be due to a poor/ slow Wi-Fi connection. You should check your Wi-Fi network speed to ensure whether it isn't the reason. You can connect your phone or laptop to the Wi-Fi router. And then, open a Wi-Fi speed tester software on the web browser.

What should I do if my base station is not working?

Update Firmware of Base Station and Router: Ensure that both the base station and Wi-Fi router have the latest firmware updates to address any compatibility issues. Factory Reset the Base Station: Perform a factory reset on the base station as a last resort option to resolve persistent connectivity problems.

Can a base station connect to a 2.4 GHz Wi-Fi network?

You can also switch your other connected device, such as; a TV, console, or PC, to the other 5 GHz Wi-Fi while keeping the base station to the 2.4 GHz Wi-Fi network. Connecting the base station to the 2.4 GHz will provide you with a wider connectivity range without being disconnected.

Why is my SimpliSafe base station not connecting?

If you have recently changed your SSID or Wi-Fi password and the SimpliSafe base station is not connecting, it could be because you have not updated the saved SSID and Wi-Fi password on the SimpliSafe keypad. Make sure to update the settings on the keypad to match your new SSID and password.



Not communicating via a base station



[SimpliSafe Base Station Not Connecting to Wi ...](#)

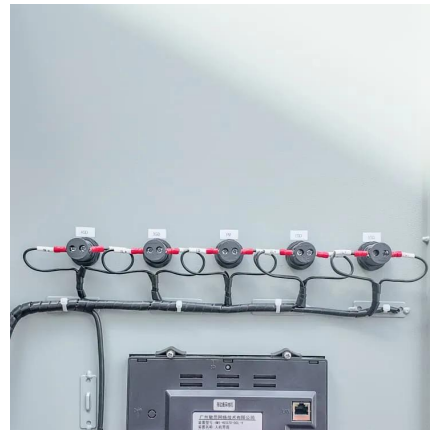
A SimpliSafe Base Station that is not connected to Wi-Fi is a common but highly fixable issue. The key to a quick resolution is to understand the system's unique cellular-first architecture.

[Learn More](#)

[How to troubleshoot a TETRA Base Station?](#)

Incorrect network settings can prevent the base station from communicating with other devices in the network. If possible, use a network diagnostic tool to test the connectivity between the ...

[Learn More](#)



[Fix Loss of Wireless Communications](#)

Loss of Wireless Communications The key to any wireless system is the communication between the wireless transmitters and the base station. We use a bi-directional ...

[Learn More](#)

[Solved: Base station stopped working and ...](#)

The arlo base stations are not accessible with wifi they connect to the internet using the Ethernet connection. The arlo app connects to the internet to access the base station via the arlo backend servers. Make ...



[Learn More](#)



Troubleshooting SimpliSafe Base Station Not Connecting to ...

Experiencing difficulty in connecting your SimpliSafe base station to Wi-Fi is a common issue faced by users. This problem can be frustrating and hinder the functionality of ...

[Learn More](#)



Troubleshooting base station setup and static measurement ...

Troubleshooting base station setup and static measurement problems This section describes some possible station setup and static measurement issues, possible causes, and ...

[Learn More](#)



[Sensors stop communicating to the base station](#)

The Ring Alarm components, such as the Contact Sensors and Range Extender, use Z-Wave rather than wifi to communicate with the Base Station. If the Contact Sensors are ...

[Learn More](#)





[How to troubleshoot a TETRA Base Station?](#)

Incorrect network settings can prevent the base station from communicating with other devices in the network. If possible, use a network diagnostic tool to test the connectivity between the base station and the core network.

[Learn More](#)



[RTK Facet not communicating](#)

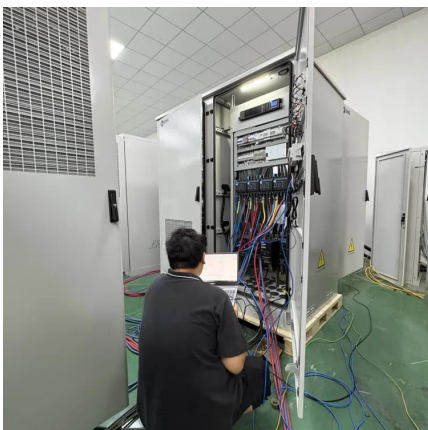
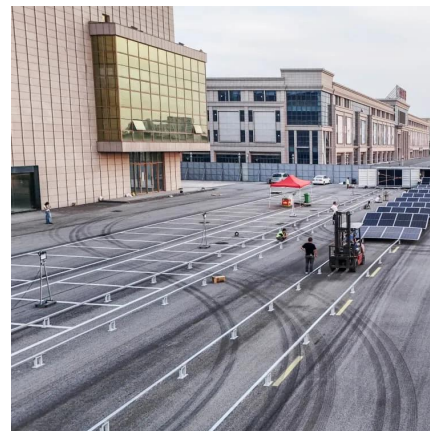
The issue appears to be that the base station is not communicating with the rover. we are getting a blinking green and red light on the base station radio, and a blinking green on ...

[Learn More](#)

[Solved: Base station stopped working and now after factory.](#)

The arlo base stations are not accessible with wifi they connect to the internet using the Ethernet connection. The arlo app connects to the internet to access the base station via ...

[Learn More](#)



[Fix Loss of Wireless Communications](#)

Loss of Wireless Communications The key to any wireless system is the communication between the wireless transmitters and the base station. We use a bi-directional communication protocol; this means that if ...

[Learn More](#)



[SimpliSafe Base Station Not Connecting to Wi-Fi?](#)

A SimpliSafe Base Station that is not connected to Wi-Fi is a common but highly fixable issue. The key to a quick resolution is to understand the system's unique cellular-first ...

[Learn More](#)



[SimpliSafe Base Station Not Connecting to Wi-Fi \(8 Fixes\)](#)

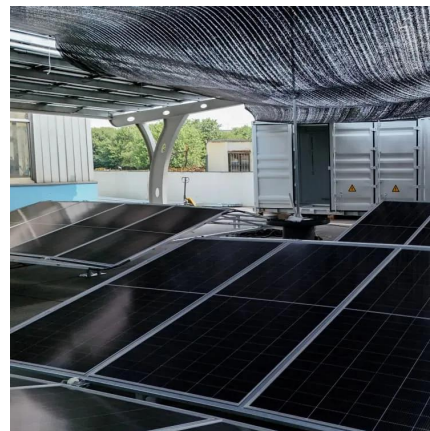
The Ring Alarm components, such as the Contact Sensors and Range Extender, use Z-Wave rather than wifi to communicate with the Base Station. If the Contact Sensors are ...

[Learn More](#)

[SimpliSafe Base Station Not Connecting to Wi-Fi \(8 Fixes\)](#)

I recently purchased a SimpliSafe base station, but I was disappointed to find that it wasn't connecting to my Wi-Fi. I had some trouble troubleshooting the issue, so I decided to ...

[Learn More](#)



[Syncing Base Stations Made Easy: A Comprehensive Guide](#)

Understanding Base Stations Before delving into the syncing process, it's essential to understand what base stations are and their role in connectivity. What is a Base Station? A ...

[Learn More](#)



Contact Us

For catalog requests, pricing, or partnerships, please visit:
<https://fundacjawandea-imk.pl>

Scan QR Code for More Information



<https://fundacjawandea-imk.pl>