

N41 How much power is generated by mobile base station equipment solar panels





Overview

Are solar powered cellular base stations a viable solution?

Cellular base stations powered by renewable energy sources such as solar power have emerged as one of the promising solutions to these issues. This article presents an overview of the state-of-the-art in the design and deployment of solar powered cellular base stations.

How much energy does a base station use?

A typical 3-sector base station site holding hardware from several carriers could draw anywhere between 2.5 to 10kW, but would typically sit somewhere in the middle. MTN Consulting estimates operators spend around 5-6 percent of their operating expenses, excluding depreciation and amortization, on energy costs.

How much energy does a 5G base station consume?

But the analyst firm says a typical 5G base station consumes up to twice or more the power of a 4G base station; it notes that the industry consensus is that 5G will double to triple energy consumption for mobile operators, once networks scale.

How much power does a mobile tower SPS have?

The SPS unit is powered by eight kilowatt (kW) solar panels, a 16.8kW hour battery and a 26kW back-up generator, which together can deliver 12kW of continuous power. The companies said at least six more mobile tower SPS will be deployed throughout Horizon Power's service area over the coming 24 months.



N41 How much power is generated by mobile base station equipment



Self-sufficient cell towers; when will cell sites go off-grid en ...

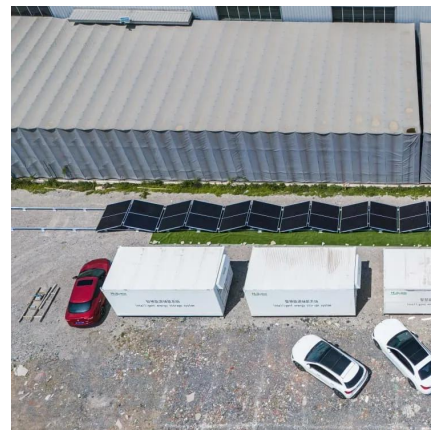
The SPS unit is powered by eight kilowatt (kW) solar panels, a 16.8kW hour battery and a 26kW back-up generator, which together can deliver 12kW of continuous power. The ...

[Learn More](#)

[Solar Powered Cellular Base Stations: Current Scenario, ...](#)

Cellular base stations powered by renewable energy sources such as solar power have emerged as one of the promising solutions to these issues.

[Learn More](#)



[Solar power generation solution for communication ...](#)

solar powered BS typically consists of PV panels, batteries, an integrated power unit, and the load. This section describes these components. Photovoltaic panels are arrays of solar PV cells to ...

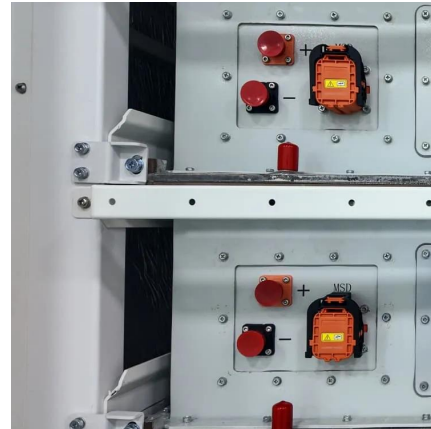
[Learn More](#)

[Renewable Energy Sources for Power Supply of Base ...](#)

Abstract -- An overview of research activity in the area of powering base station sites by means of renewable energy sources is given. It is shown that mobile network ...



[Learn More](#)



[Telecom Base Station PV Power Generation System ...](#)

The communication base station installs solar panels outdoors, and adds MPPT solar controllers and other equipment in the computer room. The power generated by solar ...

[Learn More](#)



[Self-sufficient cell towers: when will cell sites ...](#)

The SPS unit is powered by eight kilowatt (kW) solar panels, a 16.8kW hour battery and a 26kW back-up generator, which together can deliver 12kW of continuous power. The companies said at least six more ...

[Learn More](#)



[Comparative Analysis of Solar-Powered Base Stations for ...](#)

This paper examines solar energy solutions for different generations of mobile communications by conducting a comparative analysis of solar-powered BSs based on three ...

[Learn More](#)





[Energy performance of off-grid green cellular base stations](#)

However, the design of a green mobile network requires the dimensioning of the energy harvesting and storage systems through the estimation of the network's energy ...

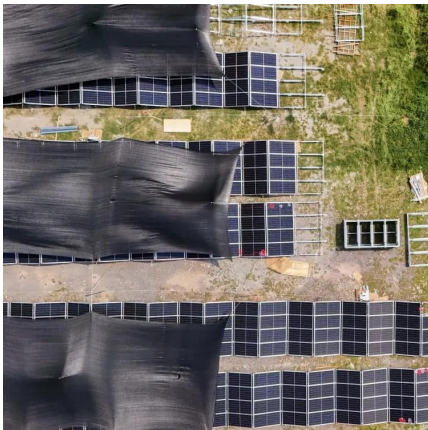
[Learn More](#)



Design and Simulation of a Solar Power System Oriented for Mobile Base

Due to the importance of the availability of mobile communication network operation service, this paper aims to design a solar energy-based power system for mobile ...

[Learn More](#)



Optimal Solar Power System for Remote Telecommunication Base Stations

The base station in a cellular network is an access link between the core network and the mobile equipment (users); a base station site consists of a set of equipment, including ...

[Learn More](#)



[Solar Powered Cellular Base Stations: Current ...](#)

Cellular base stations powered by renewable energy sources such as solar power have emerged as one of the promising solutions to these issues.

[Learn More](#)



[CHINA SOLAR COMMUNICATION BASE STATION POWER ...](#)

Power supply for photovoltaic power generation system of Sino-European communication base station The communication base station installs solar panels outdoors, and adds MPPT solar ...

[Learn More](#)



[Optimal Solar Power System for Remote ...](#)

The base station in a cellular network is an access link between the core network and the mobile equipment (users); a base station site consists of a set of equipment, including a power amplifier, baseband ...

[Learn More](#)

Contact Us

For catalog requests, pricing, or partnerships, please visit:
<https://fundacjawandea-imk.pl>

Scan QR Code for More Information



<https://fundacjawandea-imk.pl>