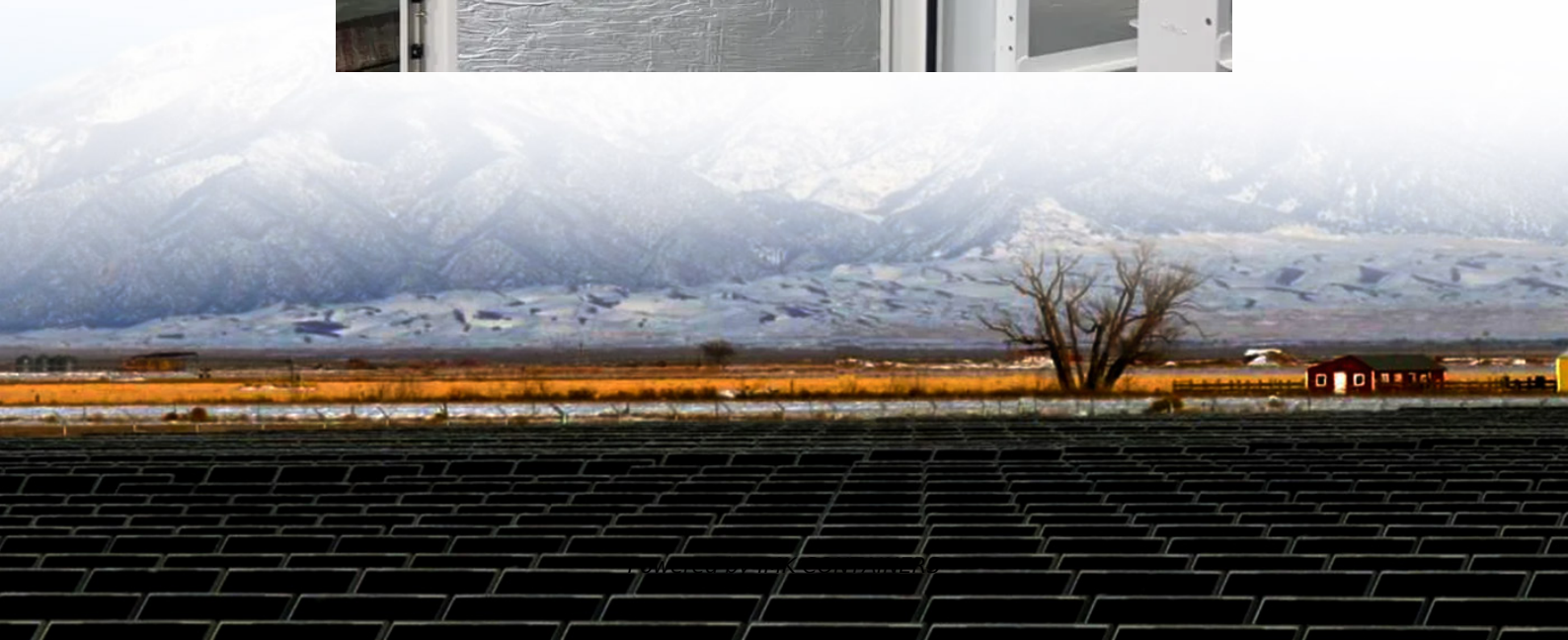


Moroni three phase 240vac inverter





Overview

What is a three-phase inverter?

A three-phase inverter is an electronic device used to convert direct current (DC) into three-phase alternating current (AC). This type of inverter is commonly used in industrial and commercial applications where three-phase power is needed, such as in electric motors, pumps, fans, and other heavy machinery.

What is the output power range of a 3 phase inverter?

Their output power range is usually between 1-10kW. Three-phase inverters are more suitable for high-power scenarios such as large photovoltaic power stations and industrial applications. Their output power is generally above 10kW, and can even reach hundreds of kilowatts or higher.

What is the rated current of a 3 phase inverter?

Rated current 21A at 380V~ 480V, 3.8A at 220V~240V. 3 phase inverter with sensorless vector control can work at (-10°C, 40°C). Come with RS485 communication mode, vfd inverter 3 phase has IP20 enclosure rating. 1.5kw variable frequency inverter for sale, vfd inverter 3 phase 230V, 400V, 480V, rated current 3.8A at 380V ~ 480V, 5.1A at 220V ~ 240V.

What is a 3 phase variable frequency inverter?

The 3 phase variable frequency inverter with input frequency 50Hz / 60Hz has good performance, such as overcurrent protection, overvoltage protection, and undervoltage protection. The variable frequency inverter usually applies for electric vehicles, power generation, marine, and aerospace.



Moroni three phase 240vac inverter



Hybrid Solar 3KW Inverter WiFi MPPT 50Hz/60Hz AC Sine Wave Three Phase

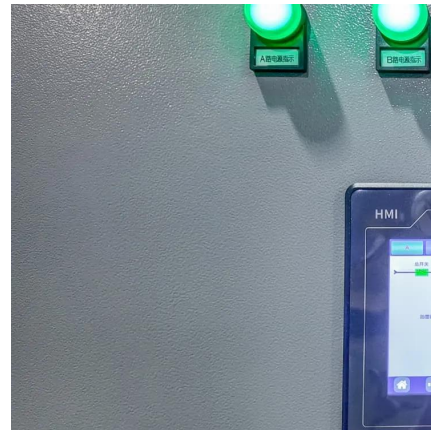
Hybrid Solar 3KW Inverter WiFi MPPT 50Hz/60Hz AC Sine Wave Three Phase for Off-Grid Applications 48Vdc Battery 240Vac Output

[Learn More](#)

[6000VA 3-phase inverters \(24VDC 48VDC, ...\)](#)

3-phase heavy industrial pure sine wave inverters, 24 VDC input (48VDC, 125VDC, 250VDC available), 208 VAC or 380 VAC or 415 VAC output available, 6000 watts continuous output

[Learn More](#)



[8kW,10kW, and 12kW Hybrid Inverter Three-phase](#)

HESP series is a new solar hybrid inverter, which integrates solar energy storage & mains charging energy storage and AC sine wave output.

[Learn More](#)



[Moroni Three-Phase Inverter Manufacturer Powering ...](#)

Three-phase inverters, like those produced by leading manufacturers such as Moroni, are the backbone of industrial and commercial energy systems. They efficiently convert DC power ...

[Learn More](#)



Three Phase Inverter

Three phase grid-tied inverter / 12 MPPTs, max. efficiency 99.0% / Certified by TÜV Rheinland with VDE-AR-N4130, supporting grid connections at Extra High Voltages $\geq 150\text{kV}$ for enhanced grid adaptability

[Learn More](#)



Three Phase Inverter

A three-phase inverter is an electronic device used to convert direct current (DC) into three-phase alternating current (AC). This type of inverter is commonly used in industrial and commercial ...

[Learn More](#)



Three Phase Inverter

Three phase grid-tied inverter / 12 MPPTs, max. efficiency 99.0% / Certified by TÜV Rheinland with VDE-AR-N4130, supporting grid connections at Extra High Voltages $\geq 150\text{kV}$ for enhanced ...

[Learn More](#)



[Three-Phase Inverters](#)



Three-Phase Inverters Introduction Modern electronic systems cannot function without three-phase inverters, which transform DC power into three-phase AC power with adjustable ...

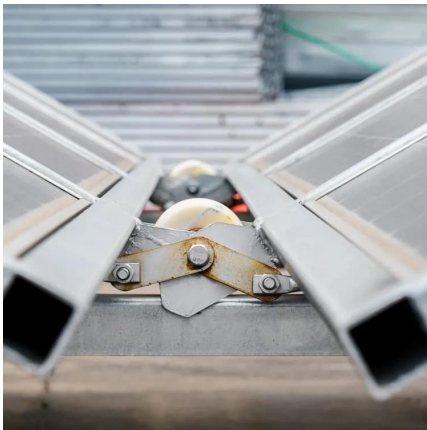
[Learn More](#)



[0.75 kW Frequency Inverter, 3 Phase 240V, 415V, 480V](#)

0.75kw variable frequency drive, 3 phase 240V/415V/480V, RS485 communication mode and IP 20 enclosure rating. The frequency drive inverter is widely used in motor control in industrial ...

[Learn More](#)



[Moroni three phase 240vac inverter](#)

What is a 3 phase inverter? With V/F and sensorless vector control, 3 phase inverter can work at (-10?, 40?), RS485 communication mode, and IP20 enclosure rating. 7.5 hp three phase ...

[Learn More](#)



DC to AC Inverters

DC to AC Inverter Benefits 3.3 kVA inverter, configurable via command from shelf controller: 120, 230, 240, or 277 V single-phase 120/240 V split-phase 208, 240, 415, 480 V three-phase (with power shelf) Capable of grid ...

[Learn More](#)



[0.75 kW Frequency Inverter, 3 Phase 240V, ...](#)



0.75kw variable frequency drive, 3 phase 240V/415V/480V, RS485 communication mode and IP 20 enclosure rating. The frequency drive inverter is widely used in motor control in industrial fields such as machine ...

[Learn More](#)



DC to AC Inverters

DC to AC Inverter Benefits 3.3 kVA inverter, configurable via command from shelf controller: 120, 230, 240, or 277 V single-phase 120/240 V split-phase 208, 240, 415, 480 V three-phase (with ...

[Learn More](#)



[6000VA 3-phase inverters \(24VDC, 48VDC, 125VDC, or ...](#)

3-phase heavy industrial pure sine wave inverters, 24 VDC input (48VDC, 125VDC, 250VDC available), 208 VAC or 380 VAC or 415 VAC output available, 6000 watts continuous ...

[Learn More](#)



Contact Us

For catalog requests, pricing, or partnerships, please visit:
<https://fundacjawandea-imk.pl>



Scan QR Code for More Information



<https://fundacjawandea-imk.pl>