

# Mobile communication signal base station is





## Overview

---

What is a base station in a telecommunications network?

A base station is a critical component in a telecommunications network. A fixed transceiver that acts as the central communication hub for one or more wireless mobile client devices. In the context of cellular networks, it facilitates wireless communication between mobile devices and the core network.

What is a base station and how does it work?

A base station is a fixed point of communication between mobile devices and the wider telecom network. It transmits and receives radio signals, enabling your phone to access voice, data, and internet services. Together, thousands of base stations form a seamless web of coverage known as a cellular network. How Does It Work?

.

What is a mobile phone base station?

A mobile phone base station provides coverage to a geographic area known as a “cell”. Cells are aligned next to each other in a similar pattern to a honeycomb, and it is for this reason that mobile phone networks are sometimes referred to as “cellular” networks.

Why are base stations important in cellular communication?

Base stations are important in the cellular communication as it facilitate seamless communication between mobile devices and the network communication. The demand for efficient data transmission are increased as we are advancing towards new technologies such as 5G and other data intensive applications.



## Mobile communication signal base station is

---



### Base Stations

The present-day tele-space is incomplete without the base stations as these constitute an important part of the modern-day scheme of wireless communications. They are ...

[Learn More](#)

### [What Is A Base Station?](#)

A base station is an integral component of wireless communication networks, serving as a central point that manages the transmission and reception of signals between ...

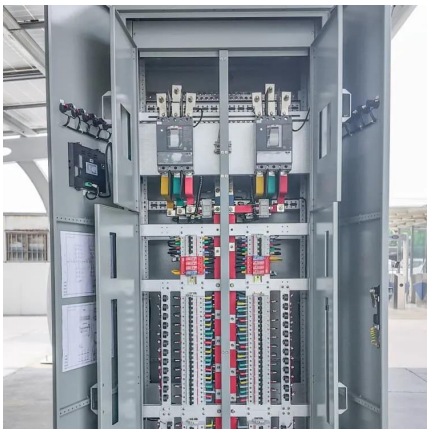
[Learn More](#)



### [What is a base station?](#)

In telecommunications, a base station is a fixed transceiver that is the main communication point for one or more wireless mobile client ...

[Learn More](#)



### [What Is a Base Station? Definition and How It Works](#)

The modern world relies on seamless wireless communication, supported by an extensive infrastructure. This infrastructure allows billions of mobile devices to connect ...





[Learn More](#)



### [What Does a Base Station Do and Why Is It Essential for...](#)

A base station is a fixed point of communication between mobile devices and the wider telecom network. It transmits and receives radio signals, enabling your phone to access ...

[Learn More](#)



### **EMF**

The signals are sent to and received from antennas that are attached to radio transmitters and receivers, commonly referred to as mobile phone base stations. The base stations are linked to the rest of the mobile and fixed ...

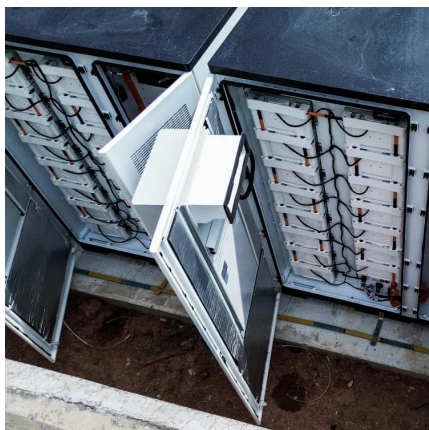
[Learn More](#)



### [What is a Base Station in ...](#)

Discover the role and functionality of a base station in telecommunications networks. Learn how these critical components manage communication between mobile devices and the network, ensuring robust connectivity.

[Learn More](#)

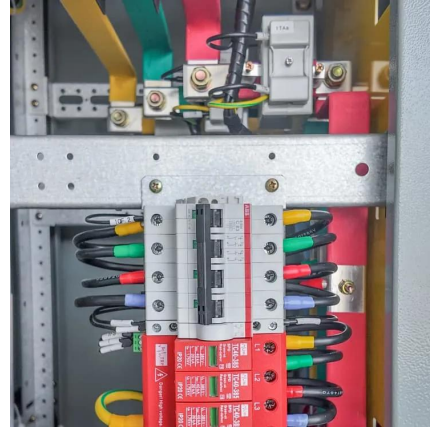




## What Is the Role of a Base Station in Wireless Communication?

Base stations are the backbone of wireless communication networks, playing a pivotal role in signal transmission, network reliability, and high-speed data connectivity. As ...

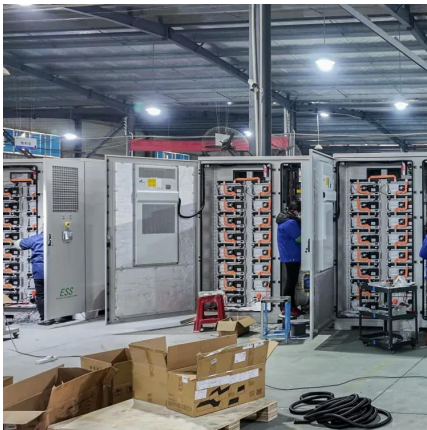
[Learn More](#)



### [What is a base station?](#)

In telecommunications, a base station is a fixed transceiver that is the main communication point for one or more wireless mobile client devices.

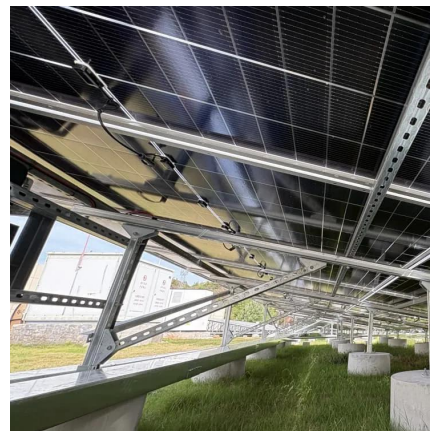
[Learn More](#)



### [Understanding Base Stations in Mobile Communication](#)

In summary, base stations play a multifaceted role in mobile communication by ensuring effective signal transmission and reception, executing seamless handoff procedures, ...

[Learn More](#)



### [What is a Base Station? -- From Communication Core to ...](#)

The base station is an indispensable piece of infrastructure in the mobile communication network, silently supporting every phone call, message, and network ...

[Learn More](#)





## EMF

The signals are sent to and received from antennas that are attached to radio transmitters and receivers, commonly referred to as mobile phone base stations. The base stations are linked ...

[Learn More](#)



## [What is a Base Station in Telecommunications?](#)

Discover the role and functionality of a base station in telecommunications networks. Learn how these critical components manage communication between mobile devices and the network, ...

[Learn More](#)

## Contact Us

---

For catalog requests, pricing, or partnerships, please visit:  
<https://fundacjawandea-imk.pl>

**Scan QR Code for More Information**



<https://fundacjawandea-imk.pl>