

Mobile Energy Storage Container Hybrid Distributor for Railway Stations





Overview

Are railway energy management systems a green solution?

The electric railway system (ERS) is a major electrical energy consumer, contributing to greenhouse gas (GHG) emissions and CO₂ pollution. This study introduces railway energy management systems (REMSs) as a green solution to address these challenges.

How do hybrid energy systems work?

First, we implement hybrid energy systems, strategically combining the attributes of multiple sources such as wind and solar energy. By strategically situating WT's and solar panels to complement each other's generation patterns, a harmonized and uninterrupted power supply is ensured.

What is smart railway energy management system?

Smart railway energy management system is one of the greenest, most modern, and eco-friendly techniques which optimizes energy usage and enhances efficiency in railway stations. As REMS is based on smart grid concepts, it can integrate with various railway components, using advanced technologies to monitor and control energy consumption.

What is the Energy Hub System (EHS)?

The energy hub system (EHS) consists of three subenergy hubs: one for power, one for heating, and one for cooling. Notably, the energy generated from RB during train deceleration is harnessed to power the EHS.



Mobile Energy Storage Container Hybrid Distributor for Railway Sta



Sustainable Electric Railway System Integrated With Distributed Energy

The higher-level strategy oversees the energy flow within the substation, while the lower-level strategy manages the power distribution within the hybrid energy storage system ...

[Learn More](#)

[Energy storage solutions for railway and metro systems](#)

Mobile energy solutions for securing the on-board electrical system of railway and metro systems, for starting diesel engines as well as for the electrical drive of traction engines.

[Learn More](#)



[Innovative Energy Storage Module for Railway is ...](#)

In the railway industry, there is a growing movement to achieve even lower carbon emissions by utilizing the "regenerative power" produced when trains decelerate. Mitsubishi ...

[Learn More](#)



[Innovative Energy Storage Module for ...](#)

In the railway industry, there is a growing movement to achieve even lower carbon emissions by utilizing the "regenerative power" produced when trains decelerate. Mitsubishi Electric Corporation and ...



[Learn More](#)



ABB and HDF Energy to develop high-power fuel cell unit for ...

Intelligent Distribution refers to advanced electrical distribution systems that integrate digital technologies to optimize the management, monitoring, and control of power distribution ...

[Learn More](#)



Shipping Containers Transformed into Mobile Power Stations! Shanghai

Shanghai Universal is also expanding the application scope of its containerized systems across electric vessels, port energy storage hubs, and renewable energy integration, ...

[Learn More](#)



Integration of Photovoltaic and Energy Storage in MVDC Railway

The implementation of hybrid energy storage in medium-voltage DC railway microgrids is a key strategy to enhance energy efficiency, stability, and resilience in modern ...

[Learn More](#)



[How energy storage could transform the ...](#)



A recent article published in Renewable and Sustainable Energy Reviews unpacks how energy storage can be strategically integrated into electric rail infrastructure to decrease emissions, cut costs, and boost ...

[Learn More](#)



[Containerized Energy Storage System , Mobile Power Unit](#)

Our containerized energy storage system combines modular battery storage with integrated power conversion. This mobile, all-in-one solution supports depots, testing facilities, and ...

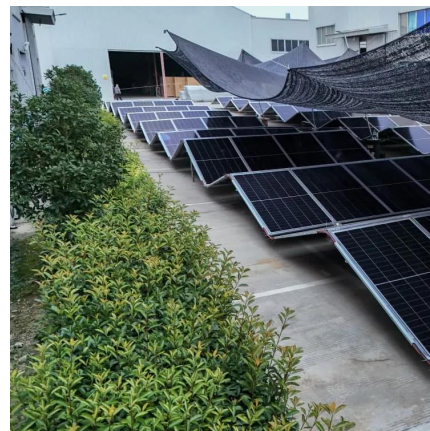
[Learn More](#)



[Hybrid Energy Storage Systems in Rail Transport](#)

Technological progress in batteries and energy storage systems: one of the most relevant tendencies in the hybrid train market is the rapid evolution of batteries' technology ...

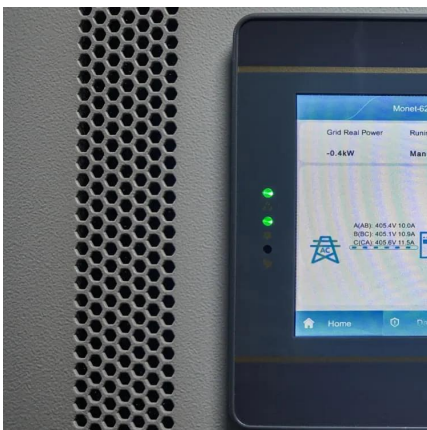
[Learn More](#)



[Energy storage solutions for railway and metro systems](#)

Intelligent Distribution refers to advanced electrical distribution systems that integrate digital technologies to optimize the management, monitoring, and control of power distribution ...

[Learn More](#)



[Hydrogen-electricity hybrid-energy system with...](#)



In summary, the novel hydrogen-electricity hybrid-energy system with SMES-BES HESS technology can greatly enhance the energy utilization and coordination of urban rail transit ...

[Learn More](#)



[How energy storage could transform the railway industry](#)

A recent article published in Renewable and Sustainable Energy Reviews unpacks how energy storage can be strategically integrated into electric rail infrastructure to decrease ...

[Learn More](#)

Contact Us

For catalog requests, pricing, or partnerships, please visit:
<https://fundacjawandea-imk.pl>

Scan QR Code for More Information



<https://fundacjawandea-imk.pl>