

Maximum storage capacity of container





Overview

How much weight can a 20 ft container carry?

The twenty-foot shipping container can carry the maximum gross weight of 30480 kg / 67200 lbs for general-purpose containers and up to 45,000 kg (99,207 lbs) for flat racks. A 20 ft reefer container has a payload capacity of 27 400kg. Other special type containers include double door and flat rack containers.

How much weight can a container hold?

There are three distinct lashing systems on the top and bottom longitudinal rails, as well as four corner posts, with a permissible max weight of 20' containers which is 1,000 kg (2,205 lbs) each. Most containers were assessed and certified for ONE-DOOR-OFF OPERATION, but with a restricted stack weight.

How many M3 can a 40ft container hold?

A standard 40ft container has 67.3 m3 capacity while a 20ft container has 33.1 m3. Remember each container's capacity may vary. Discover the world of shipping containers - designed for specific needs and available in various sizes. Shipping containers come in standard sizes to be stacked on top of and below shipping containers.

What are the dimensions of standard shipping containers?

Following are the dimensions of standard shipping containers used in the international shipping market: A standard ISO container of 20ft is the most popular and is used by ships of all sizes, big or small. The twenty-foot container dimensions are as follows:



Maximum storage capacity of container



[Container Load Capacity & Weight Distribution](#)

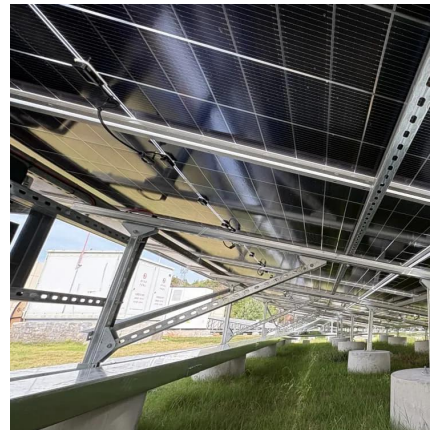
Container load capacity and weight distribution are critical for safe shipping--learn how to balance and optimize your load to prevent issues.

[Learn More](#)

[20ft, 40ft, and 40HC Container: Size, Capacity & Weight](#)

This page lists the shipping container size of 20ft, 40ft, and 40 high cubes with their capacity, max payload, and how to choose a right one.

[Learn More](#)



Standard Shipping Container Specifications and Capacity Guide

Shipping containers come in various standard sizes and configurations. Below is a detailed overview of the most commonly used container types, their dimensions, maximum payload, ...

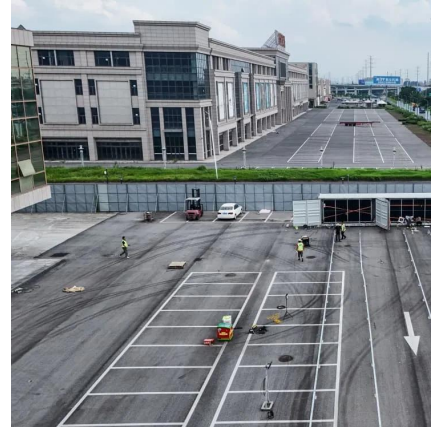
[Learn More](#)

[Shipping Container Sizes , 45 ft, 40ft, 20ft, ...](#)

Considering investing in a shipping container? Unsure about sizes? We'll help you understand dimensions, and capacity and find the right fit.



[Learn More](#)



[Container Specification](#)

Floor loads A container floor is capable of carrying a forklift truck with a maximum axle load of 5,460 kg (12,037 lbs), if the contact area per wheel is at least 142 cm² (22 in²) ...

[Learn More](#)



[A Guide to Shipping Container Dimensions](#)

The twenty-foot shipping container can carry the maximum gross weight of 30480 kg / 67200 lbs for general-purpose containers and up to 45,000 kg (99,207 lbs) for flat racks. A ...

[Learn More](#)



[Shipping Container Dimensions and Storage ...](#)

Learn about standard and high cube shipping container dimensions and storage capacity so you can choose the right container for your shipping and storage needs.

[Learn More](#)





[What is the Capacity of a Shipping Container?](#)

The tare weight of a container refers to its weight when it is empty and devoid of any cargo. This weight includes the container itself, as well as any fixtures or fittings. It is essential to consider the tare weight when calculating the ...

[Learn More](#)



[What is the Capacity of a Shipping Container?](#)

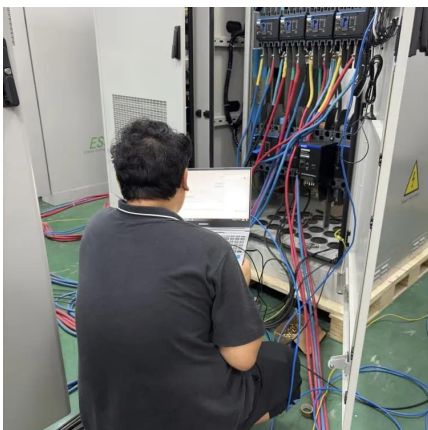
The tare weight of a container refers to its weight when it is empty and devoid of any cargo. This weight includes the container itself, as well as any fixtures or fittings. It is essential to consider ...

[Learn More](#)

[Shipping Container Dimensions, Sizes & Measurements: ...](#)

Explore our comprehensive guide on shipping container sizes, featuring detailed dimensions, measurements, and specifications to help you choose the right one.

[Learn More](#)



[20ft, 40ft, and 40HC Container: Size, Capacity ...](#)

This page lists the shipping container size of 20ft, 40ft, and 40 high cubes with their capacity, max payload, and how to choose a right one.

[Learn More](#)



[Shipping Container Dimensions , General ...](#)

Maximum gross weights: 20' containers: For general-purpose containers, the maximum container capacity is up to 32,500 kg (71,650 ...

[Learn More](#)



[Shipping Container Dimensions and Storage Capacity: What ...](#)

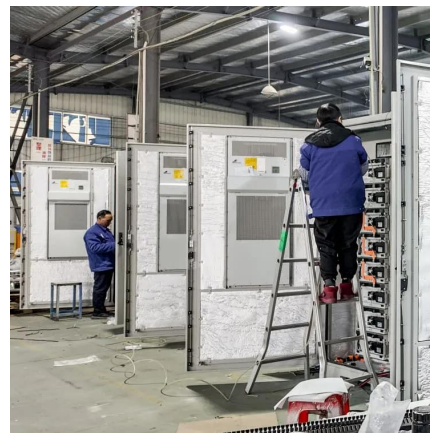
Learn about standard and high cube shipping container dimensions and storage capacity so you can choose the right container for your shipping and storage needs.

[Learn More](#)

[A Guide to Shipping Container Dimensions](#)

The twenty-foot shipping container can carry the maximum gross weight of 30480 kg / 67200 lbs for general-purpose containers and up to 45,000 kg (99,207 lbs) for flat racks. A 20 ft reefer container has a ...

[Learn More](#)



[Shipping Container Sizes , 45 ft, 40ft, 20ft, 10ft](#)

Considering investing in a shipping container? Unsure about sizes? We'll help you understand dimensions, and capacity and find the right fit.

[Learn More](#)



[Shipping Container Dimensions , General Information](#)

Maximum gross weights: 20' containers: For general-purpose containers, the maximum container capacity is up to 32,500 kg (71,650 lbs), while for Flatracks it is up to ...

[Learn More](#)



[Shipping Container Dimensions, Sizes](#)

Explore our comprehensive guide on shipping container sizes, featuring detailed dimensions, measurements, and specifications to help you choose the right one.

[Learn More](#)

Contact Us

For catalog requests, pricing, or partnerships, please visit:
<https://fundacjawandea-imk.pl>

Scan QR Code for More Information



<https://fundacjawandea-imk.pl>