

Lte base station power supply





Overview

What is a LTE power consumption model?

The model by Auer et al. described in [1], was developed as part of the EARTH (Energy Aware Radio and neTwork tecHnologies) project. It is based on measurements of LTE hardware. Most notably, the model proposes a linear increase of power consumption with the output power (or load) of the base station.

What are base station models?

The base station models vary in their approaches and potential use cases. Hereafter, the models are grouped according to these aspects. Main component models only model the power consumption of the main base station components (power amplifier, analog frontend, baseband unit, active cooling, power supply) separately.

What are the main components of a base station Power model?

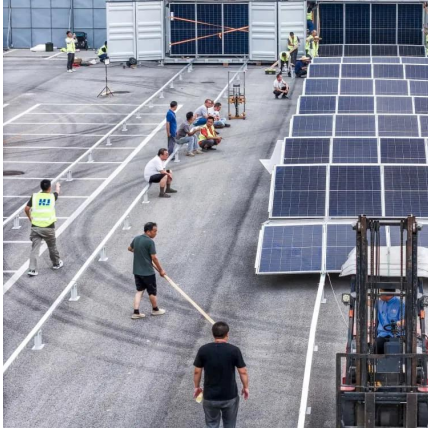
The main components are the baseband processing unit, analog frontend, power amplifier, and power supply as well as active cooling. As the main components are common to most of the models, they can be easily combined to form a new model. Most of the base station power models are based on measurements of LTE (4G) hardware or theoretical assumptions.

What is 3GPP base station model?

The central specification body of cellular networks, the 3GPP, presents a base station model to facilitate energy efficiency improvements for 3GPP Release 18 in [2]. It is based on the user equipment power model of the 3GPP in terms of structure, presentation, and approach.



Lte base station power supply



[5G Base Station Power Supply System: NextG Power's ...](#)

Discover NextG Power's 5G micro base station power solutions! Our IP65-rated 2000W/3000W modules and 48V 20Ah/50Ah LFP batteries ensure reliable connectivity.

[Learn More](#)

[Envelope Tracking Power Supply for Cell Phone Base ...](#)

Introduction Modern communication systems demand high data capacity and high speed. The long-term evolution (LTE) standard for the fourth-generation (4G) and the fifth ...

[Learn More](#)



[Building better power supplies for 5G base stations](#)

Building better power supplies for 5G base stations Authored by: Alessandro Pevere, and Francesco Di Domenico, both at Infineon Technologies

[Learn More](#)

[48V DC Power Supply Unit for Huawei DBS5900 5G Base Station](#)

48V DC Power Supply Unit UPEUe 02311TVH for Huawei DBS5900 5G LTE Base Station BBU5900 UMPTe5 UMPTe3. Reliable power solution for telecom infrastructure., Alibaba



[Learn More](#)



Comparison of Power Consumption Models for 5G Cellular Network Base

The work in [26] presents an assessment of the environmental impacts associated with mobile networks in Germany. Power consumption models for base stations are briefly ...

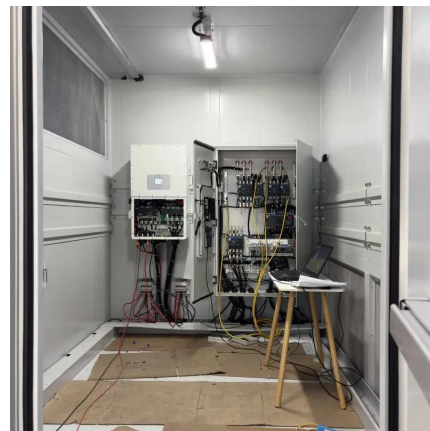
[Learn More](#)



Flexible power modeling of LTE base stations

The model is based on a combination of base station components and sub-components as well as power scaling rules energy is depending on a given amount of data to ...

[Learn More](#)



Study on Power Feeding System for 5G Network

High Voltage Direct Current (HVDC) power supply HVDC systems are mainly used in telecommunication rooms and data centers, not in the Base station. With the increase of ...

[Learn More](#)

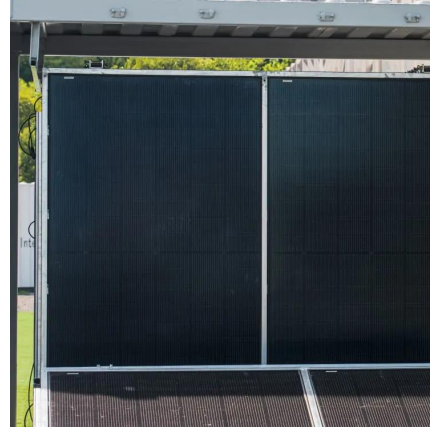


Selecting the Right Supplies for Powering 5G Base Stations



These tools simplify the task of selecting the right power management solutions for these devices and, thereby, provide an optimal power solution for 5G base stations components.

[Learn More](#)



48V DC Power Supply Unit for Huawei DBS5900 5G Base Station ...

48V DC Power Supply Unit UPEUe 02311TVH for Huawei DBS5900 5G LTE Base Station BBU5900 UMPTe5 UMPTe3. Reliable power solution for telecom infrastructure., Alibaba

[Learn More](#)



Power Supply Solutions for Wireless Base Stations Applications

MORNSUN has designed entire collections of power supplies and related electrical components, which are all known in the industry for their high reliability and quality. In particular, MORNSUN ...

[Learn More](#)



[5G macro base station power supply design strategy and ...](#)

For macro base stations, Cheng Wentao of Infineon gave some suggestions on the optimization of primary and secondary power supplies. "In terms of primary power supply, we ...

[Learn More](#)





Contact Us

For catalog requests, pricing, or partnerships, please visit:
<https://fundacjawandea-imk.pl>

Scan QR Code for More Information



<https://fundacjawandea-imk.pl>