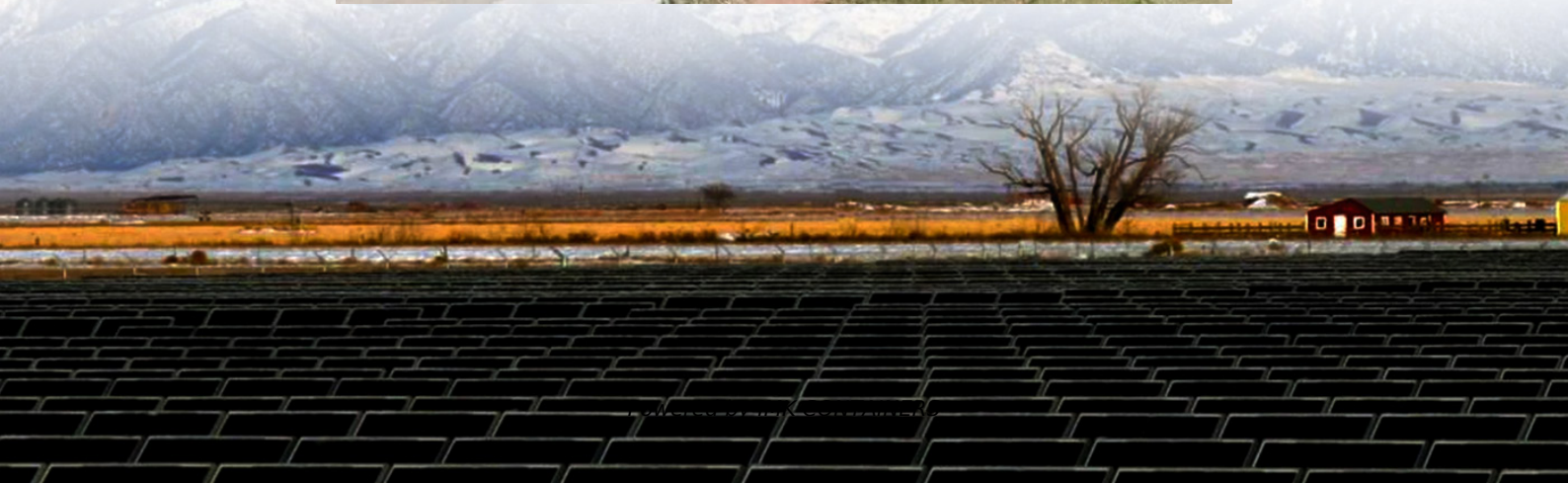


Lobamba energy storage solar container lithium battery manufacturer





Lobamba energy storage solar container lithium battery manufactu



Eswatini: Discover Lobamba & Swazi Culture - Pulse of All ...

Lobamba, the traditional heart of the nation, provides an unparalleled glimpse into Swazi culture and royal heritage. The country's diverse landscapes, ranging from majestic mountains to lush ...

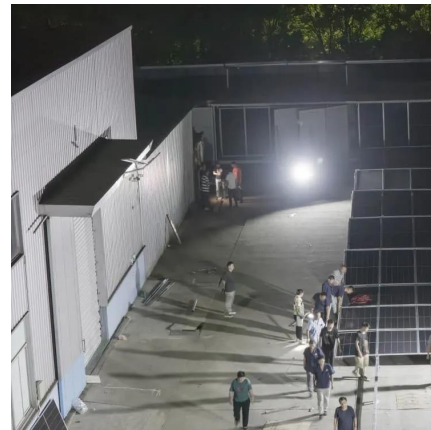
[Learn More](#)



[8 Best Things to Do in Lobamba, Eswatini \(Swaziland\)](#)

Explore the top attractions and activities in Lobamba, Eswatini (Swaziland). Lobamba, the cultural heart of Eswatini, is famous for its traditional ceremonies, vibrant markets, and rich history. ...

[Learn More](#)



[Lobamba, Eswatini - MondoScan](#)

Lobamba and Eswatini are rich in cultural and traditional events that offer visitors a unique insight into Swazi customs and celebrations. The annual Umhlanga or Reed Dance is a colorful and ...

[Learn More](#)

[THE 10 BEST Things to Do in Lobamba \(2025\)](#)

Things to Do in Lobamba, Eswatini (Swaziland): See Tripadvisor's 2,152 traveler reviews and photos of Lobamba tourist attractions. Find what to do today, this weekend, or in December. ...



[Learn More](#)



Lobamba

Eswatini's (Swaziland's) spiritual, cultural and political heart lies at Lobamba, just east of the Ezulwini Valley. This area has been playing host to the country's royalty for over 200 years ...

[Learn More](#)



[Lobamba , Royal Residence, Cultural Hub & Traditional ...](#)

Lobamba, densely populated rural area, central Swaziland, southern Africa. According to traditional Swazi customs, Lobamba is the residence of the Ndlovukazi ("She Elephant"; i.e., ...

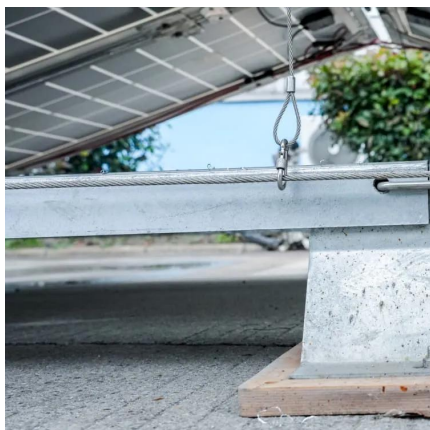
[Learn More](#)



Lobamba, Eswatini

Discover Lobamba, Eswatini: Your ultimate travel guide with top attractions, must-try activities, insider tips, and ready-to-use itineraries. Plan your trip with ease and explore like a pro!

[Learn More](#)





[Eswatini Lobamba: Where history and royalty meet](#)

Lobamba is the historical and cultural capital of Eswatini. It is a small town located in the Ezulwini Valley and is home to the country's National Museum, which is a must-visit for anyone who ...

[Learn More](#)



[Lobamba - Travel guide at Wikivoyage](#)

Lobamba is about equidistant from Manzini or Mbabane, and King Mswati III International airport is about 75 km away. Try Transmagnific if you are in need of bus ...

[Learn More](#)

Contact Us

For catalog requests, pricing, or partnerships, please visit:
<https://fundacjawandea-imk.pl>

Scan QR Code for More Information



<https://fundacjawandea-imk.pl>