

Liechtenstein 60kw inverter operating parameters





Overview

What are CSI solar inverters?

CSI Solar's grid-tied, transformer-less string inverters help to accelerate the use of three-phase string architecture for industrial and commercial rooftop applications. These inverters are modular design building blocks that provide high yield and enable significant BoS cost savings.

How to isolate a PV inverter from a reverse polarity meter?

Turn DC Switch OFF 2. Open Fuse holders to isolate PV strings 3. Use meter to find out which PV string is connected in reverse polarity 4. 2. Restart inverter by turning both AC and DC switches OFF. Wait for 1 minute for all energy to discharge and turn both switches ON 3.

What is a livoltek inverter?

The LIVOLTEK this Grid-tied inverters are extensively utilized in residential, commercial, and industrial rooftop installations. Each photovoltaic string can handle a maximum input current of 20A and is compatible with high-power modules, including those exceeding 600W, available in the global market.

How to set up a PV inverter?

Switch the Inverter's DC Switch to the "ON" position. When the energy supplied by the PV array is sufficient, the LCD screen of inverter will light up. The inverter will then start up with the message "sys checking". When the inverter completes "Initialization", the LCD will show the screen as Figure 5-1 below. 4. Setting Language.



Liechtenstein 60kw inverter operating parameters



[SKU-11631-60 kWh-VT-61060](#)

Simple O& M Smart I-V Curve Diagnosis Function: locate PV string faults accurately and automatically detect faults Intelligent Fault Detection: ac-side voltage and ...

[Learn More](#)

[Grid-tied Inverter Three-Phase GT3-30~60kW ...](#)

Livoltek grid-tied inverters for rooftop solar: high-power compatibility, multi-MPP tracking, smart features, and high efficiency.

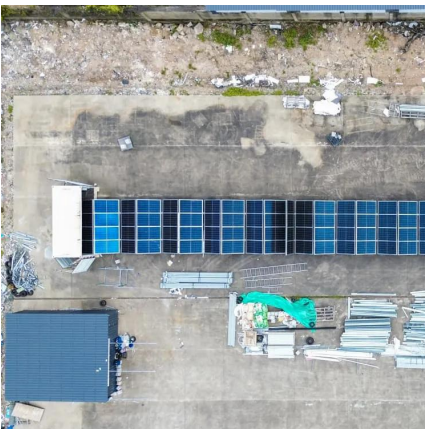
[Learn More](#)



[Grid-tied Inverter Three-Phase GT3-30~60kW](#)

Livoltek grid-tied inverters for rooftop solar: high-power compatibility, multi-MPP tracking, smart features, and high efficiency.

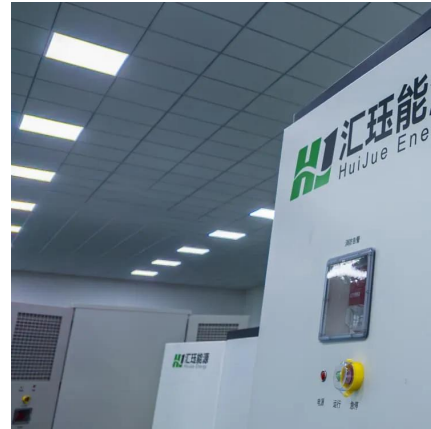
[Learn More](#)



[50-60kW PV string inverter_three phase inverter](#)

S5-GC (50-60)K three-phase series string inverter are suitable for the installation of three-phase input pv system of commercial and industrial PV plants. Adopt 5/6 MPPT design to provide a ...

[Learn More](#)



[Inverter CPS SCA50/60KTL-T/EU](#)

CPS SCA50/60KTL-T/EU Three-Phase String Inverter 50/60kW o 4 MPPTs o 1100Vdc System

[Learn More](#)



[60K-480V Datasheet \(EN\)](#)

Native 277/480 3 phase output simplifies installation Helps meet your corporate renewable energy goals and decarbonizations efforts Seamless integration with new arrays Accommodates ...

[Learn More](#)



[CS_Datasheet_Three-Phase_GI_100-110K_V1.0_E1_SA_A4](#)

CSI-40kW , CSI-50kW , CSI-60kW CSI Solar's grid-tied, transformer-less string inverters help to accelerate the use of three-phase string architecture for industrial and ...

[Learn More](#)

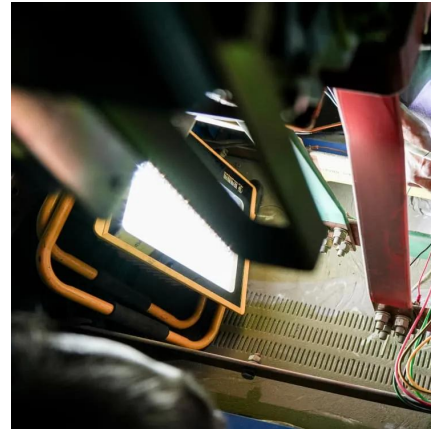


[Growatt MAX 60 KTL3 LV , 3-Phase industrial...](#)



Growatt MAX TL3-LV is energy storage three-phase inverter designed for residential and commercial applications. Available capacities: 50kW, 60kW, 70kW, 80kW, 100kW, 110kW, 120kW, 125kW. Inverter is also equipped ...

[Learn More](#)



[50-60kW PV string inverter_three phase ...](#)

55-GC (50-60)K three-phase series string inverter are suitable for the installation of three-phase input pv system of commercial and industrial PV plants. Adopt 5/6 MPPT design to provide a more flexible configuration ...

[Learn More](#)



[Growatt MAX 60 KTL3 LV , 3-Phase industrial inverter](#)

Growatt MAX TL3-LV is energy storage three-phase inverter designed for residential and commercial applications. Available capacities: 50kW, 60kW, 70kW, 80kW, 100kW, 110kW, ...

[Learn More](#)



[Three Phase String Inverter](#)

Three Phase String Inverter SUN-60/70/75/80K-G 4 MPP trackers, Max. efficiency up to 98.7% Zero export application, VSG application String intelligent monitoring (optional)

[Learn More](#)

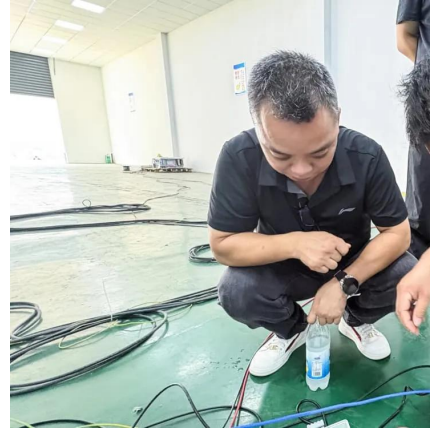


[CPS Series Photovoltaic Grid Connection Inverter](#)



CPS advises against leaving inverters mounted outdoors for an extended period of time (more than 90 days) and/or allowing inverters exposed to cycles of freezing temperature ...

[Learn More](#)



[Three-phase grid inverter Growatt 60KW, MAX60KTL3 LV](#)

Brands: Growatt SKU: MAX60KTL3LV (PV02.0052806) Categories: Grid-tie inverters, Three-phase inverters Tag: Growatt 5245,26 BGN incl. VAT / EUR2,681.86 Availability:: ...

[Learn More](#)

Contact Us

For catalog requests, pricing, or partnerships, please visit:
<https://fundacjawandea-imk.pl>

Scan QR Code for More Information



<https://fundacjawandea-imk.pl>